

FILED 2005 - 0079

RECORDER'S OFFICE
CHICKASAW COUNTY, IOWA

Dec 700
2005 JAN 14 AM 8 38

CINDY MESSERSMITH
COUNTY RECORDER

Jeffrey P. Helland, 1107 Technology Parkway, Cedar Falls, Iowa 50613-6951, (319)-266-0161

UNITED STATES PUBLIC LAND SURVEY CORNER CERTIFICATE OF

LAND SURVEY MONUMENTS SITUATED IN SECTION NO. 16, TOWNSHIP NO. 94 NORTH, RANGE
NO. 12 WEST OF THE FIFTH PRINCIPAL MERIDIAN, CHICKASAW COUNTY, IOWA.

PREVIOUSLY RECORDED IN BOOK _____, PAGE _____.

(SHOW REASON FOR PREPARING THIS CERTIFICATE, THE EVIDENCE AND DETAILED PROCEDURES USED IN ESTABLISHING THE
CORNER POSITIONS AND MONUMENTATION FOUND OR PLACED.)

MONUMENT DESCRIPTION AND REMARKS:

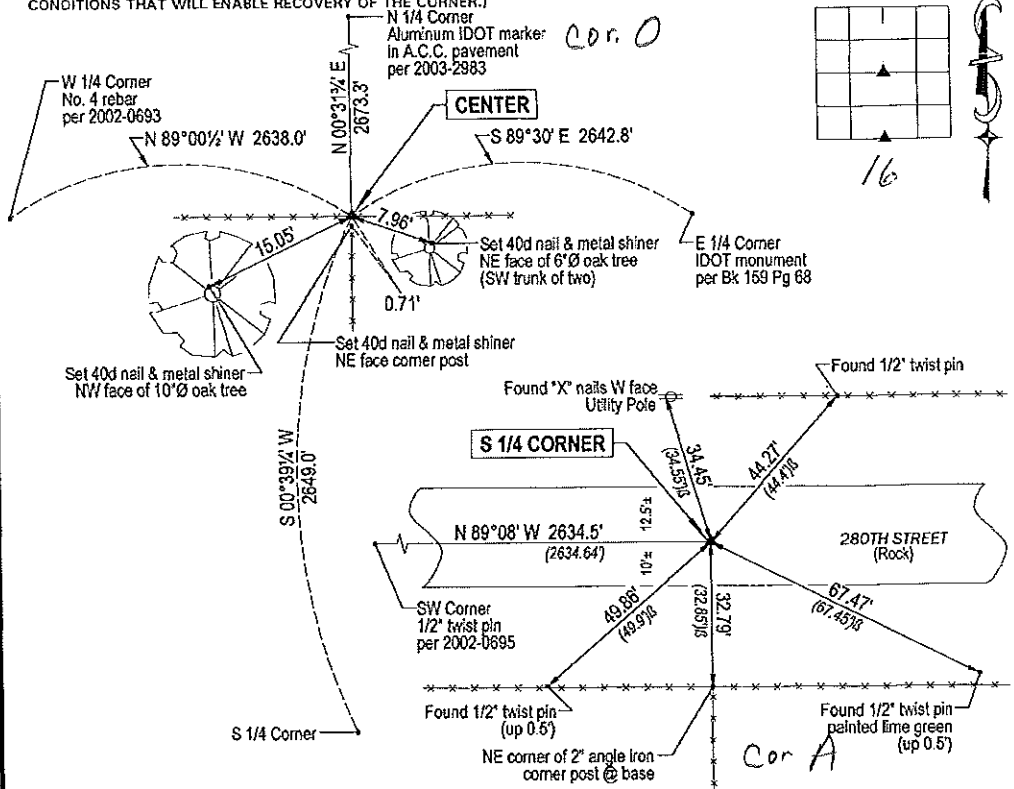
No corner certificates on file. Survey completed in the SW 1/4 of Sec. 16-T94N-R12W.

CENTER: No Chickasaw County Engineer reference ties exist. Set No. 4 rebar w/orange plastic cap #16264 in fence line running E-W at North side of existing corner post. Theoretical intersection of 1/4 corners is 11.35' North & 2.75' West of corner as established.

S 1/4 CORNER: "Vernon Lampe Survey" recorded in Bk 133 Pg 359 dated 11/27/1984 calls for "FND BOLT." Chickasaw County Engineer reference ties calls for "Iron Pin 5/1954, Found IP 3/24/1989 and Set 1/2" rebar w/cap 6/2003." Found No. 4 rebar w/yellow plastic cap labeled "CHICKASAW COUNTY" 0.3' deep. Corner as found corresponds to said Chickasaw County Engineer reference ties and to said "Vernon Lampe Survey".

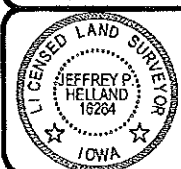
PLAN VIEW

(SHOW A MINIMUM OF THREE REFERENCE TIES TO DURABLE PHYSICAL OBJECTS, RELEVANT MONUMENTS AND PHYSICAL
CONDITIONS THAT WILL ENABLE RECOVERY OF THE CORNER.)



HES HELLAND ENGINEERING & SURVEYING, LTD.
1107 Technology Parkway
Cedar Falls, Iowa 50613-6951
(319)-266-0161

(00.00) - Per Chickasaw County Engineer ties
(00.00) - Recorded As
File Name: 05-102c1.dwg



I hereby certify that this land surveying document was prepared and the related survey work was performed by me or under my direct personal supervision and that I am a duly licensed Land Surveyor under the laws of the State of Iowa.
Jeffrey P. Helland 1/12/05
Jeffrey P. Helland
License Number 16264
My license renewal date is December 31, 2005.
All pages or sheets are covered by this seal except _____

CORNER	SECTION	TOWNSHIP	RANGE
CENTER	16	94N	12W
S 1/4 CORNER	16	94N	12W

Rec.