

DOCUMENT No. 159 Deed FILED FL. THE 9th DAY OF October STATE OF IOWA, CHICKASAW COUNTY
 RECORDING FEE \$ 6.00 At 8:30 By Debra W. Ross Recorder
 TRANSFER FEE \$ --- LOOK 159 Deed PAGE 68 LEITHA H. ROSS Deputy

UNITED STATES PUBLIC LAND SURVEY CORNER CERTIFICATE

Section 16-94-12
 AS referred to in
 Engr. Tie Book

OF

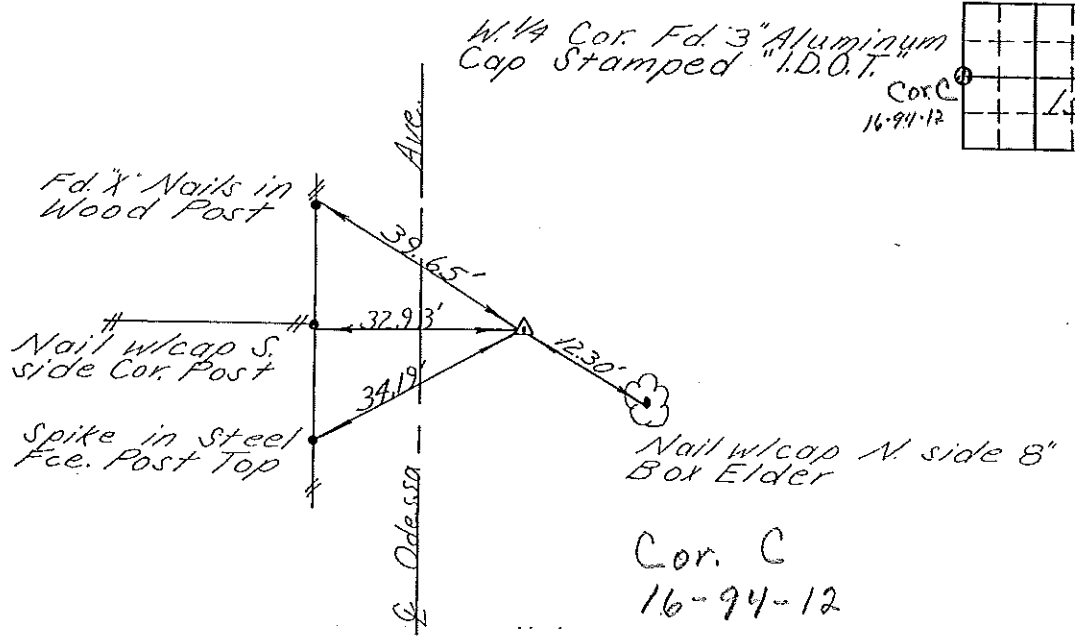
Land Survey Monuments situated in Section 15¹⁶, Township 94N
 Range 12W, of the Fifth Principal Meridian, Chickasaw
 County, Iowa. Previously recorded in does not apply
 County Recorders Office. (book, page, document number, etc.)

(Show reason for preparing this certificate, the evidence and detailed procedures used establishing the corner positions and monumentation found or placed.)

Monument Description and Remarks: This certificate is prepared in accordance with Section 355.11 of the 1995 Code of Iowa. In this case no previous certificate has been filed for this corner. Based on County Engineer's reference ties we found "X" nails in N-S fence and found spike in top of steel fence post in N-S fence. We did not find "X" nails in corner post. From the ties found we found a 3-inch aluminum cap stamped "I.D.O.T." 6 inches below surface of an unimproved road matching the previous description of the W $\frac{1}{4}$, Sec. 15-94-12.

PLAN - VIEW

(Show a minimum of three reference ties to durable physical objects, relevant monuments, physical conditions that will enable recovery of the corner.)



I hereby certify that the survey work was completed and this certificate was prepared by me or under by direct personal supervision and that I am a duly registered land surveyor under the laws of the State of Iowa.

Signature: Lindsay Erdman
 Lindsay Erdman, P.E. & L.S.

Date: 10/2/95 Reg. No. 11442

My license will be renewed January 1, 1997.

SEAL



Corners	List Corners to be Indexed	Section	Twp.	Range.
W $\frac{1}{4}$	15	94	12	
Cor. C	16	94-12		

PPK
L. Erdman
10/10/95