

FILED 2005 - 0080
 RECORDER'S OFFICE
 CHICKASAW COUNTY, IOWA
Page # 700
 2005 JAN 14 AM 8 38

CINDY MESSERSMITH
 COUNTY RECORDER

Jeffrey P. Helland, 1107 Technology Parkway, Cedar Falls, Iowa 50613-6951, (319)-266-0161

**UNITED STATES PUBLIC LAND SURVEY CORNER CERTIFICATE
 OF**

LAND SURVEY MONUMENTS SITUATED IN SECTION NO. 16, TOWNSHIP NO. 94 NORTH, RANGE
 NO. 12 WEST OF THE FIFTH PRINCIPAL MERIDIAN, CHICKASAW COUNTY, IOWA.

PREVIOUSLY RECORDED IN BOOK _____, PAGE _____.

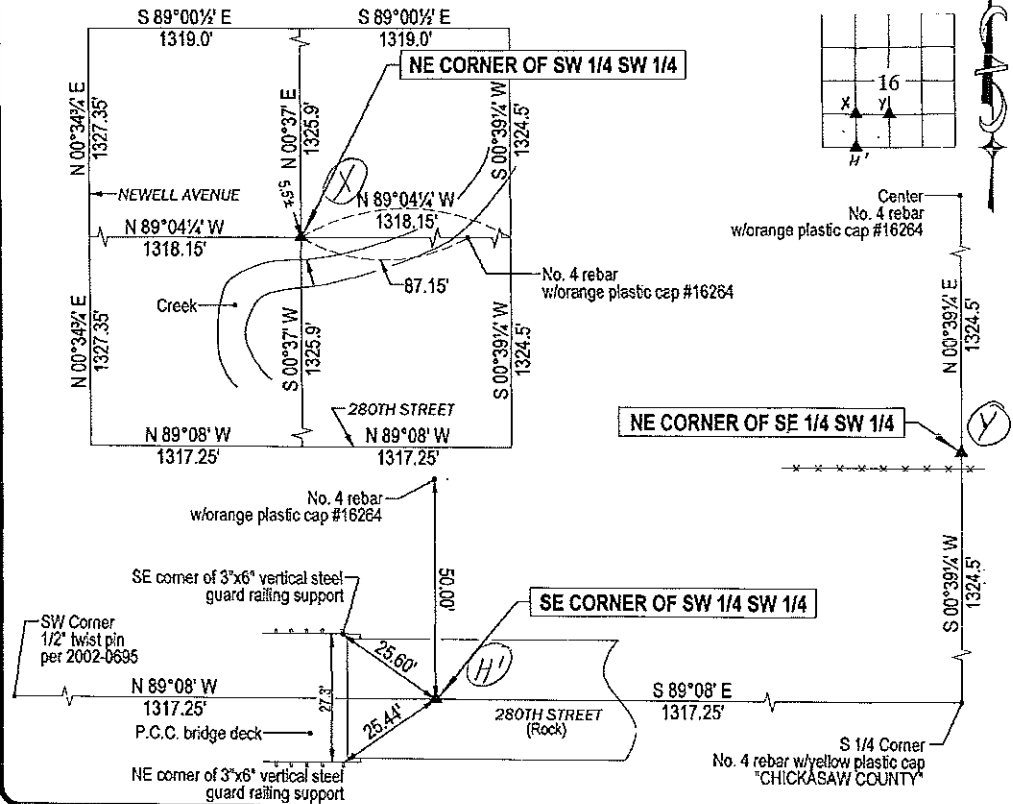
(SHOW REASON FOR PREPARING THIS CERTIFICATE, THE EVIDENCE AND DETAILED PROCEDURES USED IN ESTABLISHING THE
 CORNER POSITIONS AND MONUMENTATION FOUND OR PLACED.)

MONUMENT DESCRIPTION AND REMARKS:

- Y No corner certificates on file. Survey completed in the SW 1/4 of Sec. 16-T94N-R12W.
- X NE CORNER of SE 1/4 SW 1/4: No Chickasaw County Engineer reference ties exist. Set No. 4 rebar w/orange plastic cap #16264 at midpoint of line between the Center and the S 1/4 Corner. Leaning CP is 2.4' S & 3.6' E.
- X NE CORNER of SW 1/4 SW 1/4: No Chickasaw County Engineer reference ties exist. Set No. 4 rebar w/orange plastic cap #16264 at intersection of 1/16 corners.
- H SE CORNER of SW 1/4 SW 1/4: No Chickasaw County Engineer reference ties exist. Set "cotton gin spike" in rock road at midpoint of line between the S 1/4 Corner and SW corner.

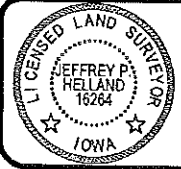
PLAN VIEW

(SHOW A MINIMUM OF THREE REFERENCE TIES TO DURABLE PHYSICAL OBJECTS, RELEVANT MONUMENTS AND PHYSICAL
 CONDITIONS THAT WILL ENABLE RECOVERY OF THE CORNER.)



HES HELLAND ENGINEERING & SURVEYING, LTD.
 1107 Technology Parkway
 Cedar Falls, Iowa 50613-6951
 (319)-266-0161

(00.00)B - Per Chickasaw County Engineer ties
 (00.00) - Recorded As
 File Name: 05-102c2.dwg



I hereby certify that this land surveying document was prepared and the related survey work was performed by me or under my direct personal supervision and that I am a duly licensed Land Surveyor under the laws of the State of Iowa.
Jeffrey P. Helland 1/12/05
 License Number: 16264
 My license renewal date is December 31, 2005.
 All pages or sheets are covered by this seal except

LIST CORNERS TO BE INDEXED

CORNER	SECTION	TOWNSHIP	RANGE
NE COR. SE 1/4 SW 1/4	16	94N	12W
NE COR. SW 1/4 SW 1/4	16	94N	12W
SE COR. SW 1/4 SW 1/4	16	94N	12W

Rec