



Prepared by & Return to: Herold - Reicks Surveying, 10 East Main Street, New Hampton, IA 50659, Ph. 641-394-2725

United States Public Land Survey Corner Certificate

Land Survey Monument situated in
 Section 15, Township 94 North, Range 12 West of the Fifth Principal Meridian, Chickasaw County, Iowa.
 On file in Book 159, Page 295 in the County Recorder's Office.

This certificate is being prepared in compliance with Iowa Code Chapter 355.11 because:

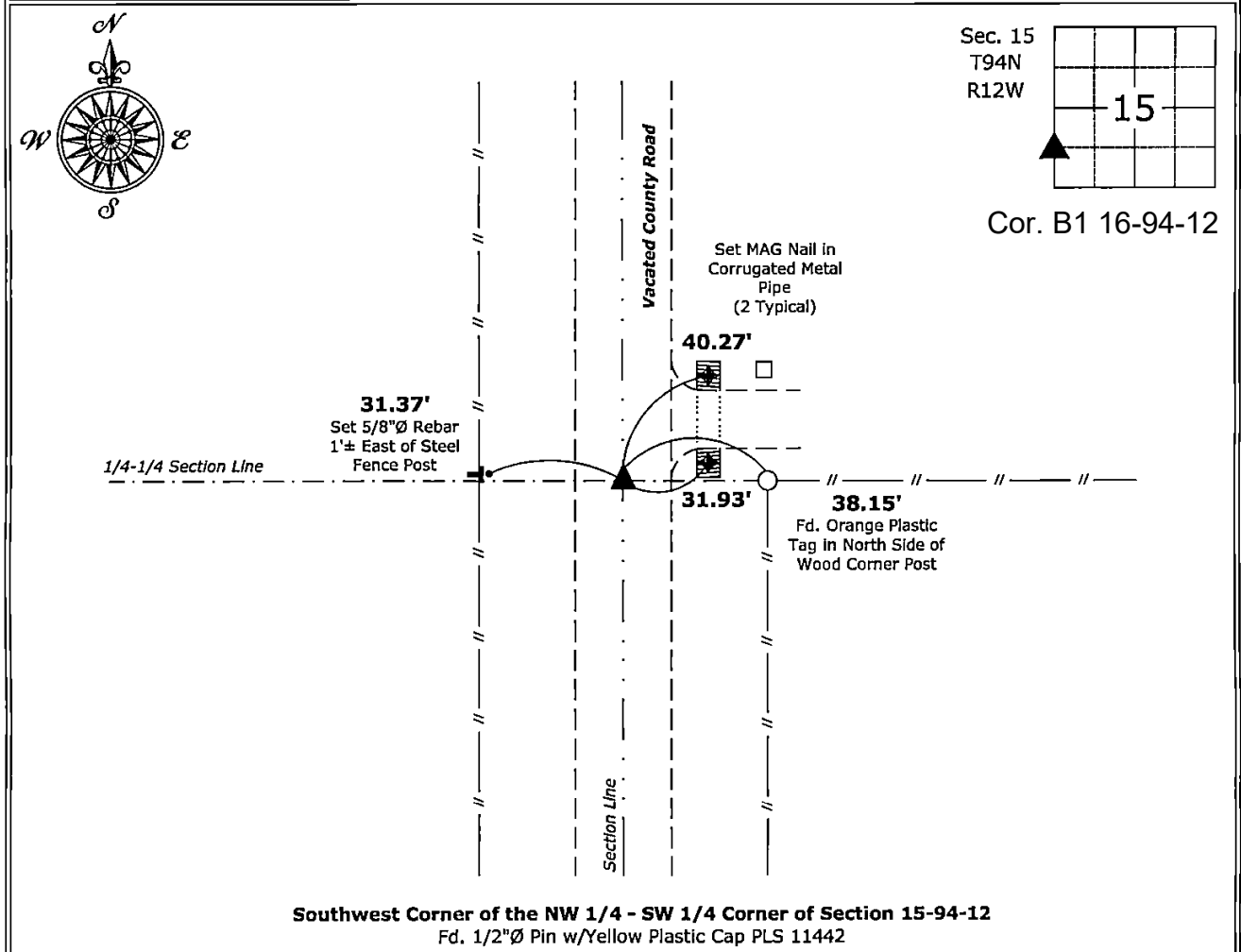
- There is no certificate on file for this corner.
- There are no longer three valid ties of record.
- There are changes to reference ties of record.
- There is change of monumentation of record.
- To clarify description of record monument (ties).

Monument Description and Remarks:

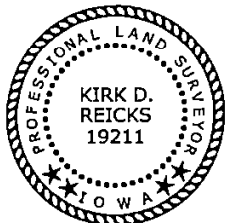
Southwest Corner of the NW 1/4 - SW 1/4 Corner: Found 1/2"Ø Pin w/Yellow Plastic Cap PLS 11442 with information obtained from the previously recorded Section Corner Certificate.

Plan View

(Show a minimum of three reference ties to durable physical objects, relevant monuments and physical conditions that will enable recovery of the corner.)



Southwest Corner of the NW 1/4 - SW 1/4 Corner of Section 15-94-12
 Fd. 1/2"Ø Pin w/Yellow Plastic Cap PLS 11442



I hereby certify that this land surveying document was prepared and the related survey work was performed by me or under my direct personal supervision and that I am a duly licensed Land Surveyor under the laws of the State of Iowa.

Kirk D. Reicks 11-28-2022
 Kirk D. Reicks Date:

License number 19211
 My license renewal date is December 31, 2022.
 Sheets covered by this seal: Individual sheet only

List Corner to be Indexed			
Corner	Section	Twp.	Range
SW-NW-SW	15	94	12
Project Number: 2022-129			
FB: Chickasaw 11, Pgs. 64-65			