

Chickasaw Co. Recorder
 Cindy Messersmith
Fee Book 2008-1778
 09/15/2008 @11:05AM
 SCC SEC COR CERT
 Book: Page: # Pages: 1
 Total Fees: \$7.00

Section 8-94-12
 As referred to in
 Engr. The Book

Herold - Recks Surveying, 25 1/2 East Main Street, Suite 204, New Hampton, IA 50658, Ph. 641-394-2725

UNITED STATES PUBLIC LAND SURVEY CORNER CERTIFICATE

Land Survey Monuments situated in Section 16, Township 94 North, Range 12 West of the Fifth Principal Meridian, Chickasaw County, Iowa. Previously recorded in 1.) Doc. #2002-0693, 2.) Doc. #2003-2983, in the Chickasaw County Recorder's office.

This certificate is being prepared in compliance with Iowa Code Chapter 355.11 because:

- There is no certificate on file for this corner.
- There are no longer three valid ties of record.
- There are changes to reference ties of record.
- 1.) & 2.) There is change of monumentation of record.
- To clarify description of record monument (ties).

Monument Description and Remarks:

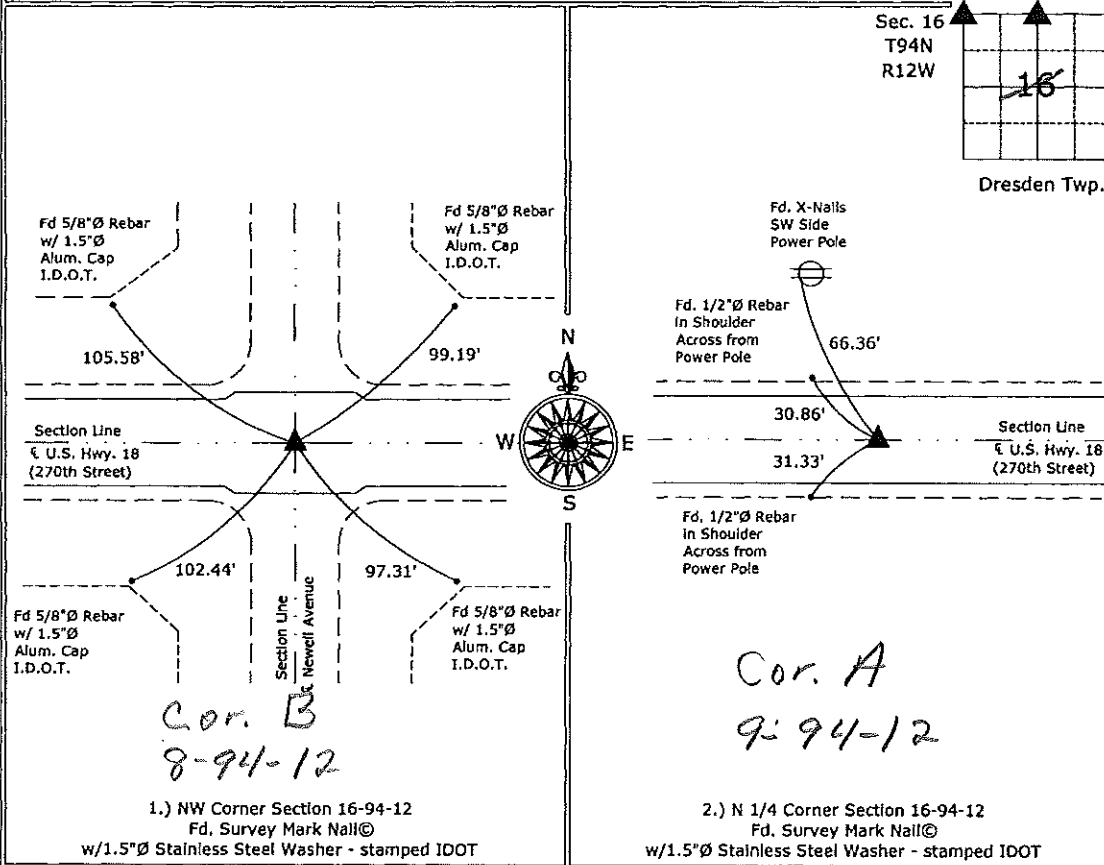
1.) NW Corner Section 16-94-12: Fd. Survey Mark Nail© w/1.5"Ø Stainless Steel Washer - stamped IDOT

2.) N 1/4 Corner Section 16-94-12: Fd. Survey Mark Nail© w/1.5"Ø Stainless Steel Washer - stamped IDOT

Both Corners were located from ties on the previous Section Corner Certificate, the previous monuments (both IDOT 2"Ø Alum. Disks) were covered over with an HMA overlay, the distances between the Corners match the last survey of record (Doc. #2003-2982)

PLAN - VIEW

(Show a minimum of three reference ties to durable physical objects, relevant monuments and physical conditions that will enable recovery of the corner.)



I hereby certify that this land surveying document was prepared and the related survey work was performed by me or under my direct personal supervision and that I am a duly licensed Land Surveyor under the laws of the State of Iowa.
 Paul R. Herold 8-26-08
 Paul R. Herold Date:
 License number 15525
 My license renewal date is December 31, 2008.
 Sheets covered by this seal: Individual sheet only

List Corners to be Indexed			
Corners	Section	Twp.	Range
NW	16	94	12
N 1/4	16	94	12

Project Number: 2008-089
 FB: Chickasaw County 3, Pg. 4

File: S:_Projects\2008\2008-089\dwg\2008-089.dwg, 8/26/2008 11:11:35

Section 9-94-12
 As referred to in
 Engr. Tie Book

FILED 2003-2983
 RECORDER'S OFFICE
 CHICKASAW COUNTY, IOWA
 2003 SEP 23 AM 9 10
 CHYDY MESSERSMITH
 COUNTY RECORDER

TeKIPPE ENGINEERING, P.C., 128 South Vine Street, West Union, Iowa 52175 Phone (563) 422-5131

UNITED STATES PUBLIC LAND SURVEY CORNER CERTIFICATE

OF 9

Land Survey Monuments situated in Section 16, Township 94 North, Range 12 West of the Fifth Principal Meridian, CHICKASAW County, Iowa.
 Previously recorded in none in County Recorder's Office.
(book, page, document number, etc.)

(Show reason for preparing this certificate, the evidence and detailed procedures used in establishing the corner positions and monumentation found or placed.)

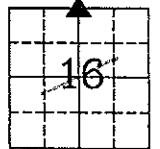
Monument Description and Remarks: N 1/4 Corner Section 16 T94N R12W: Found Iowa D.O.T. aluminum disk with information obtained from a Cornerstone Survey made by Robert R. Burns, Jr. for U. S. Highway 18 Project F-18-7(19)--21-19.

PLAN - VIEW

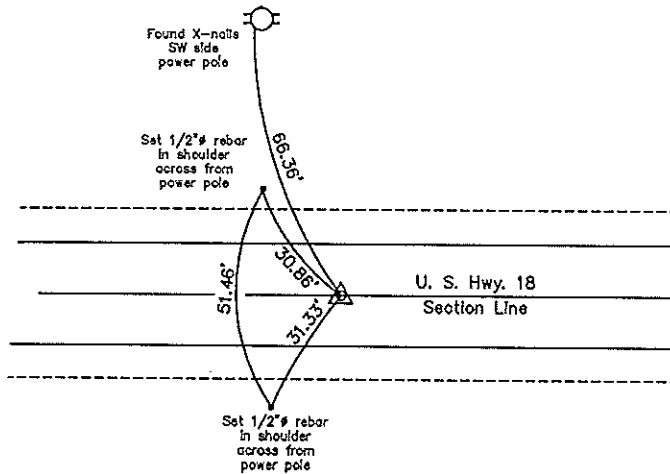
Project Number 03173.LS
 FB. 46K PG. 26-27

(Show a minimum of three reference ties to durable physical objects, relevant monuments and physical conditions that will enable recovery of the corner.)

Sec. 16
 T94N
 R12W

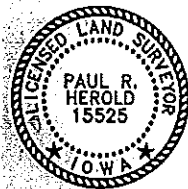


Dresden Twp.



Cor A Sec 9-94-21

N 1/4 Corner Section 16 T94N R12W
 Found Iowa D.O.T. aluminum disk



I hereby certify that this land surveying document was prepared and the related survey work was performed by me or under my direct personal supervision and that I am a duly Licensed Land Surveyor under the laws of the State of Iowa.

Paul R. Herold 9-19-03
 Paul R. Herold Date
 License number 15525
 My license renewal date is December 31, 2004.
 Sheets covered by this seal: Individual

List Corners to be Indexed			
Corners	Section	Twp.	Range
N 1/4	16	94N	12W

Filed 10-7-03

X:\Section Corners\Sec. 16\16-94-12c.dwg