

UNITED STATES PUBLIC LAND SURVEY CORNER CERTIFICATE

OF

Land Survey Monuments situated in Section 15⁹, Township 94N, Range 12W of the Fifth Principal Meridian, CHICKASAW County, Iowa.

Previously recorded in Book 170, Page 114 - Book 162, Page 283 in County Recorder's Office.
(book, page, document number, etc.)

(Show reason for preparing this certificate, the evidence and detailed procedures used in establishing the corner positions and monumentation found or placed.)

Monument Description and Remarks: NW CORNER: Replaced previously found Lead Plug with a Survey Mark Nail/IDOT Sec. Cor. washer, 2.65'+/- South of US 18 per previous cert of record Book 170, Page 114 after HMA resurfacing project NHSX-018-7(62)--3H-19.

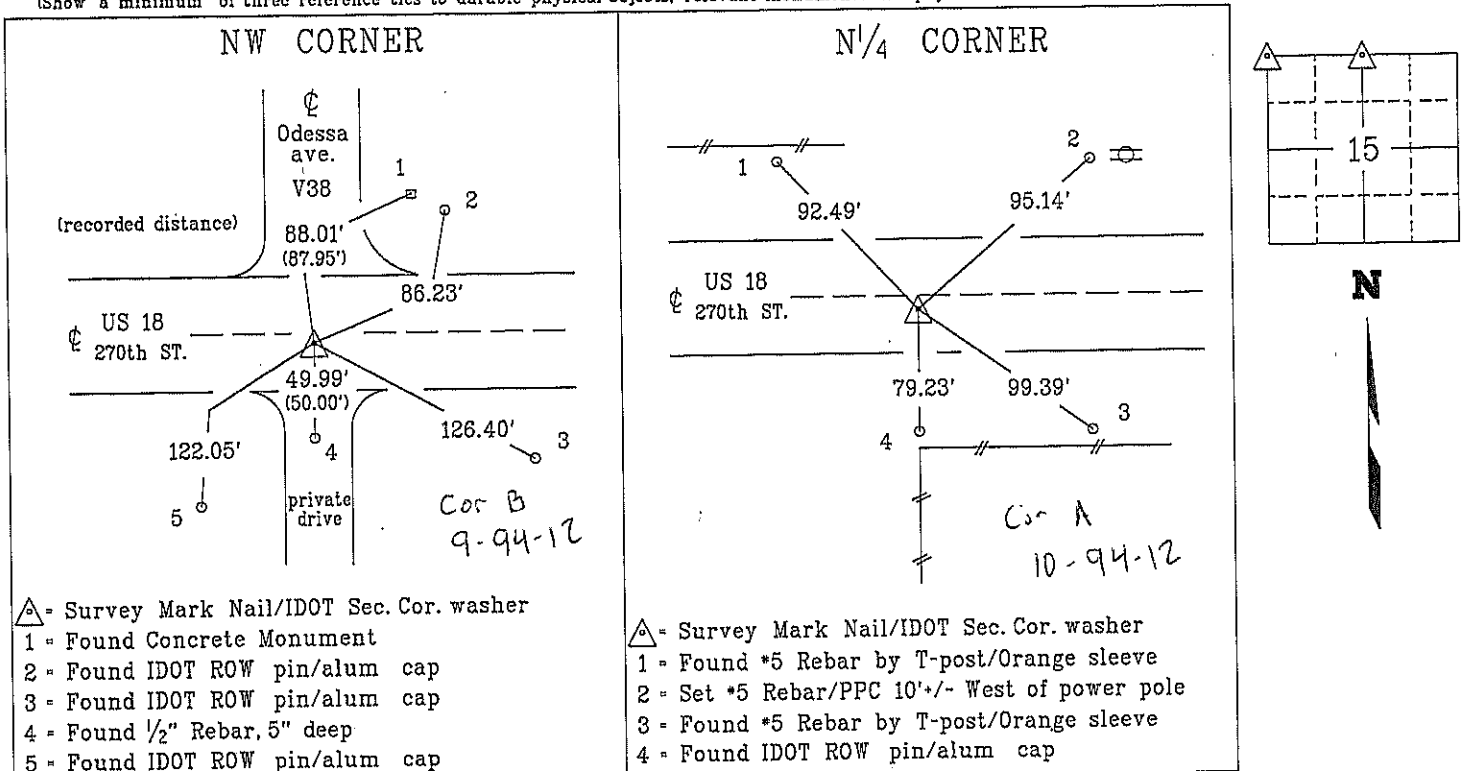
Reason for cert: Monumentation and ties have changed.

N¹/₄ CORNER: Replaced previously found IDOT Alum Disc with a Survey Mark Nail/IDOT Sec. Cor. washer, 1.6'+/- South of US 18 per previous cert of record Book 162, Page 283 after HMA resurfacing project NHSX-018-7(62)--3H-19.

Reason for cert: Monumentation and ties have changed.

PLAN - VIEW

(Show a minimum of three reference ties to durable physical objects, relevant monuments and physical conditions that will enable recovery of the corner.)



List Corners to be Indexed

Corner	Section	Township	Range
NW CORNER	15	94N	12W
N ¹ / ₄ CORNER	15	94N	12W

PPC = Pink Plastic Cap

PROFESSIONAL LAND SURVEYOR

KENNETH D. STARK

10898

IOWA

I hereby certify that this land surveying document was prepared and the related survey work was performed by me or under my personal supervision and that I am duly licensed Land Surveyor under the laws of the state of Iowa.

Kenneth D. Stark 09-05-16
Date

Kenneth D. Stark
License number 10898
My License renewal date is December 31, 2017
Pages or sheets covered by this seal. 1

drawn by: cjs 02/16

UNITED STATES PUBLIC LAND SURVEY CORNER CERTIFICATE OF

Land Survey Monuments situated in Section 15⁹, Township 94N, Range 12W
of the Fifth Principal Meridian, CHICKASAW County, Iowa.

Previously recorded in Doc. No. 01538 - Doc. No. 00981 in County Recorder's Office.
(book, page, document number, etc.)

(Show reason for preparing this certificate, the evidence and detailed procedures used in establishing the corner positions and monumentation found or placed.)

Monument Description and Remarks: NW CORNER: Replaced previously found Lead Plug with a Survey Mark Nail/IDOT Sec. Cor. washer, 2.65'+/- South of US 18 per previous cert of record Doc. No. 01538 after HMA resurfacing project NHSX-018-7(62)--3H-19.

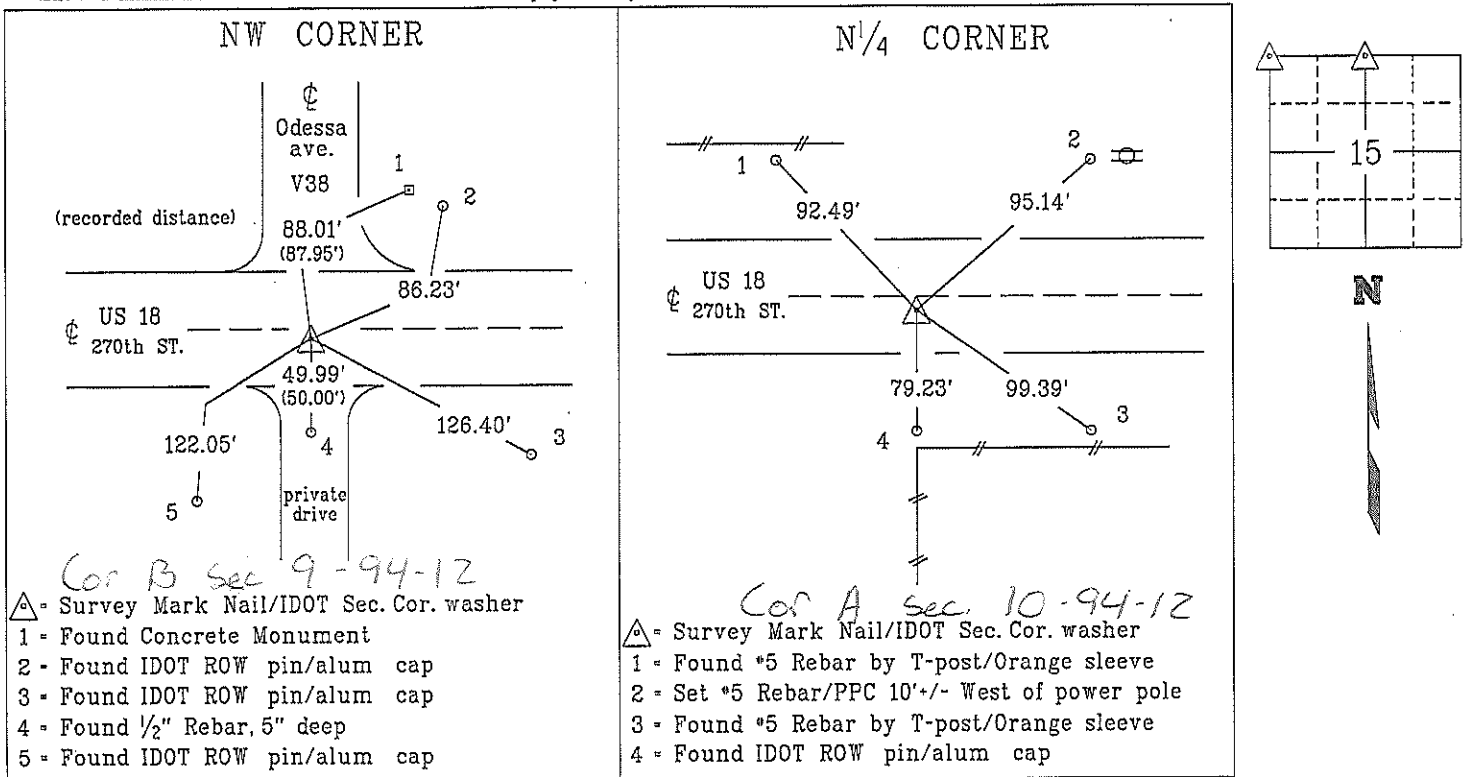
Reason for cert: Monumentation and ties have changed.

N¹/₄ CORNER: Replaced previously found IDOT Alum Disc with a Survey Mark Nail/IDOT Sec. Cor. washer, 1.6'+/- South of US 18 per previous cert of record Doc. No. 00981 after HMA resurfacing project NHSX-018-7(62)--3H-19.

Reason for cert: Monumentation and ties have changed.

PLAN - VIEW

(Show a minimum of three reference ties to durable physical objects, relevant monuments and physical conditions that will enable recovery of the corner.)



PROFESSIONAL LAND SURVEYOR
KENNETH D. STARK
10898
IOWA

I hereby certify that this land surveying document was prepared and the related survey work was performed by me or under my personal supervision and that I am duly licensed Land Surveyor under the laws of the state of Iowa.

Kenneth D. Stark
Kenneth D. Stark
License number 10898
My License renewal date is December 31, 2017
Pages or sheets covered by this seal. 1

List Corners to be Indexed			
Corner	Section	Township	Range
NW CORNER	15	94N	12W
N ¹ / ₄ CORNER	15	94N	12W

PPC = Pink Plastic Cap

drawn by: cis 02/16

Section 9-94-12
 As referred to in
 Engr. Tie Book

I DOCUMENT NO. 01538 FILED FOR RECORD THE 7th DAY OF January 1999 AT 10:28 STATE OF IOWA, CHICKASAW COUNTY.
 C RECORDING FEE \$ 6.00 By Lindsay Erdman Recd
 M S TRANSFER FEE \$ _____ O'CLOCK A.M. BOOK 170 PAGE 114 By GINDY MESSERSMITH Dt

Prepared by: Erdman Engineering P.C. 708 Commerce Drive, P.O. Box 246, Decorah Iowa, 52101
 Phone (319)382-4194, Fax (319)382-3623

United States Public Land Survey Corner Certificate

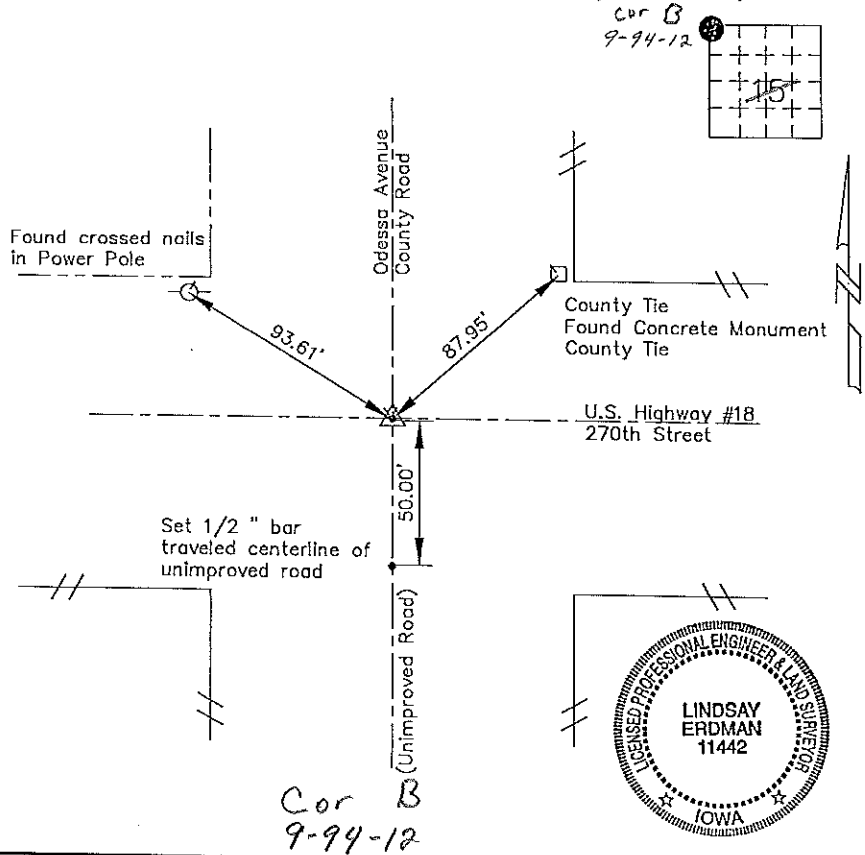
9 of

Land Survey Monuments situated in Section 15 Township 94 Range 12 of the Fifth Principle Meridian, Chickasaw County, Iowa. Previously recorded in does not apply in County Recorders Office.

(Show reason for preparing this certificate, the evidence and detailed procedures used in establishing the corner positions and monumentation found or placed.)

Monument Description and Remarks: This certificate is prepared in accordance with Section 355.11 of the 1995 Code of Iowa. No previous certificate has been filed for this corner location. Based on Chickasaw County Engineer's Reference Ties we found a concrete monument and a Power Pole with crossed nails used as tie markers. From these ties we searched for the Iowa Department of Transportation Standard Aluminum Core Monument that had been previously set. We did not find the monument. It appears to have been covered by A.C.C. resurfacing. Based on this we set a P.K. nail from the found ties at the NW Corner of Sec. 15-T94N-R12W.

Plan-View
 (Show a minimum of three reference ties to durable physical objects, relevant monuments and physical conditions that will enable recovery of the corner.)



I hereby certify that the survey work was completed and this certificate was prepared by me or under my direct supervision and that I am a duly registered land surveyor under the laws of the State of Iowa.

Signature: Lindsay Erdman
 Lindsay Erdman, P.E. and L.S.
 Date: 1/7/99 Reg. No. 11442

My license renewal date is December 31, 2000

Corners	Section	Twp.	Range
NW	15	94	12

U:\egad\sect\chick\98165\98165.dwg