

FILED 2002-0694  
 RECORDER'S OFFICE  
 CHICKASAW COUNTY, IOWA

2002 MAR 15 AM 8 54

CINDY MESSERSMITH  
 COUNTY RECORDER

TeKIPPE ENGINEERING, P.C., 128 South Vine Street, West Union, Iowa 52175 Phone (563) 422-5131

UNITED STATES PUBLIC LAND SURVEY CORNER CERTIFICATE

OF

Land Survey Monuments situated in Section 17, Township 94 North, Range 12 West of the Fifth Principal Meridian, CHICKASAW County, Iowa.

Previously recorded in none in County Recorder's Office.  
(book, page, document number, etc.)

(Show reason for preparing this certificate, the evidence and detailed procedures used in establishing the corner positions and monumentation found or placed.)

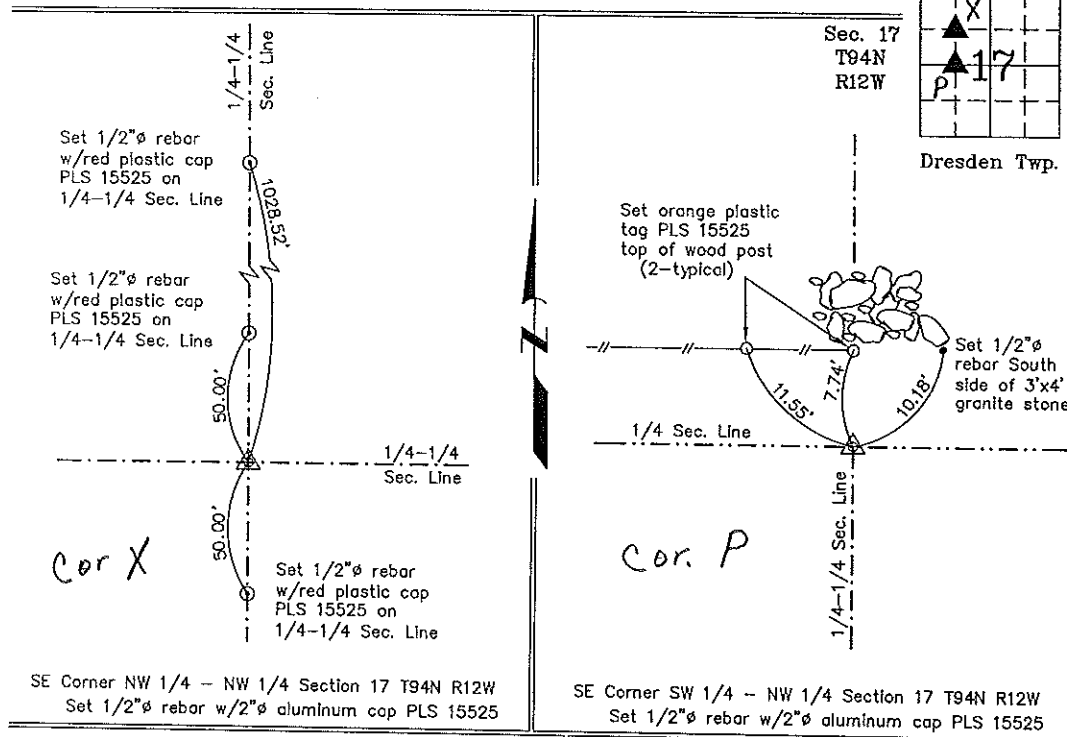
Monument Description and Remarks: SE Corner NW 1/4 - NW 1/4 Section 17 T94N R12W  
Set 1/2"Ø rebar w/2"Ø aluminum cap PLS 15525 at the intersection of 1/4-1/4  
Section Lines after the standard mathematical subdivision of the Section.

SE Corner SW 1/4 - NW 1/4 Section 17 T94N R12W: Set 1/2"Ø rebar w/2"Ø aluminum cap PLS 15525 equidistant and on line between the W 1/4 Corner and the Center of the Section.

PLAN - VIEW

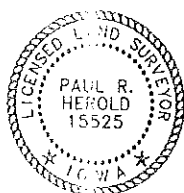
Project Number 02028.15  
 FB. 461 PG. 61-68

(Show a minimum of three reference ties to durable physical objects, relevant monuments and physical conditions that will enable recovery of the corner.)



SE Corner NW 1/4 - NW 1/4 Section 17 T94N R12W  
 Set 1/2"Ø rebar w/2"Ø aluminum cap PLS 15525

SE Corner SW 1/4 - NW 1/4 Section 17 T94N R12W  
 Set 1/2"Ø rebar w/2"Ø aluminum cap PLS 15525



I hereby certify that this land surveying document was prepared and the related survey work was performed by me or under my direct personal supervision and that I am a duly licensed Land Surveyor under the laws of the State of Iowa.

*Paul R. Herold* 3-13-02  
 Paul R. Herold Date  
 License number 15525  
 My license renewal date is December 31, 2002.  
 Sheets covered by this seal: Individual

List Corners to be Indexed			
Corners	Section	Twp.	Range
SE-NW-NW	17	94N	12W
SE-SW-NW	17	94N	12W

Filed 3-28-02

*County Engineer*