



PREPARED BY / RETURN TO: MIRANDA K. EILDERS IOWA DEPARTMENT OF TRANSPORTATION 428 43rd ST. SW MASON CITY, IA 50401 641-423-7584

UNITED STATES PUBLIC LAND SURVEY CORNER CERTIFICATE

OF

Land Survey Monuments situated in Section 18, Township 94N, Range 12W  
 of the Fifth Principal Meridian, CHICKASAW County, Iowa.

Previously recorded in DOC. NO. 2020-0115 in County Recorder's Office.  
(book, page, document number, etc.)

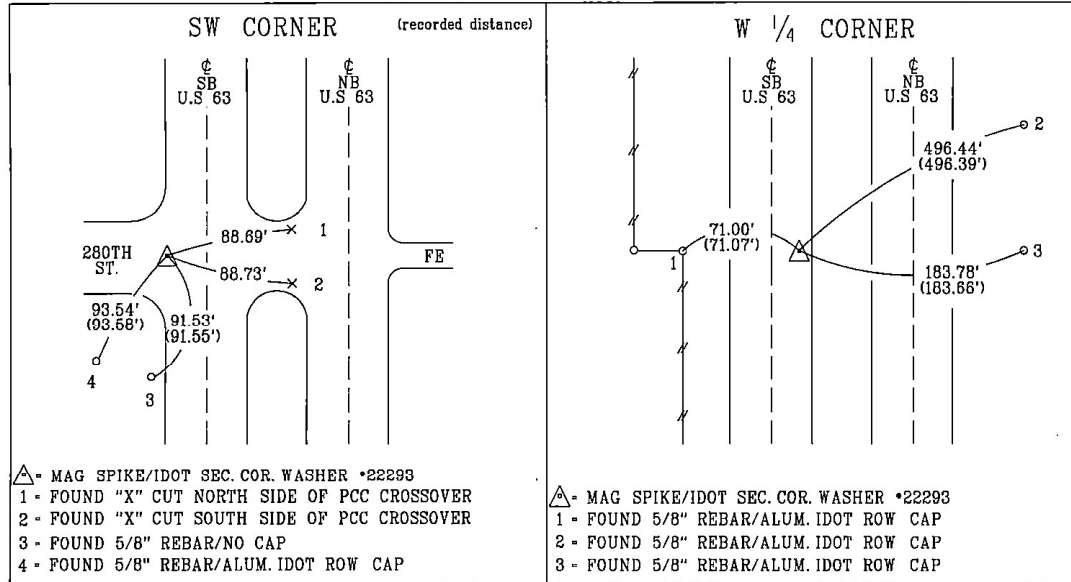
(Show reason for preparing this certificate, the evidence and detailed procedures used in establishing the corner positions and monumentation found or placed.)

Monument Description and Remarks: SW CORNER: REPLACED PREVIOUSLY FOUND MAG SPIKE/IDOT SEC. COR. WASHER \*22293 WASHER WITH MAG SPIKE/IDOT SEC. COR. \*22293 11' WEST OF C SOUTH BOUND LANE OF US. 63 PER CERT OF RECORD DOC. NO. 2020-0115 AFTER 2023 RESURFACING PROJECT NHSX-063-8(071)--3H-19.  
REASON FOR CERT: MONUMENTATION AND TIES HAVE CHANGED.

W 1/4 CORNER: REPLACED PREVIOUSLY FOUND MAG SPIKE/IDOT SEC. COR. WASHER \*22293 WITH MAG SPIKE/IDOT SEC. COR. WASHER \*22293 10.9' EAST OF C SOUTH BOUND LANE OF US. 63 PER CERT OF RECORD 2020-0115 AFTER 2023 RESURFACING PROJECT NHSX-063-8(071)--3H-19.  
REASON FOR CERT: MONUMENTATION HAS CHANGED.

PLAN - VIEW

(Show a minimum of three reference ties to durable physical objects, relevant monuments and physical conditions that will enable recovery of the corner.)



COR B  
13-94-13

COR C  
13-94-13

List Corners to be Indexed  
 Corner Section Township Range

SW CORNER	18	94N	12W
W 1/4 CORNER	18	94N	12W



I hereby certify that this land surveying document was prepared and the related survey work was performed by me or under my personal supervision and that I am duly licensed professional Land Surveyor under the laws of the state of Iowa.  
 Miranda K. Elders Date 1-30-2024  
 License number 22293  
 My License renewal date is December 31, 2025  
 Pages or sheets covered by this seal: 1

