

Section 13-94-12
As referred to in
Engr. Tie Book

SLSI 9-90

UNITED STATES PUBLIC LAND SURVEY CORNER CERTIFICATE

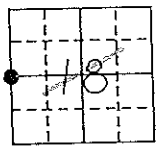
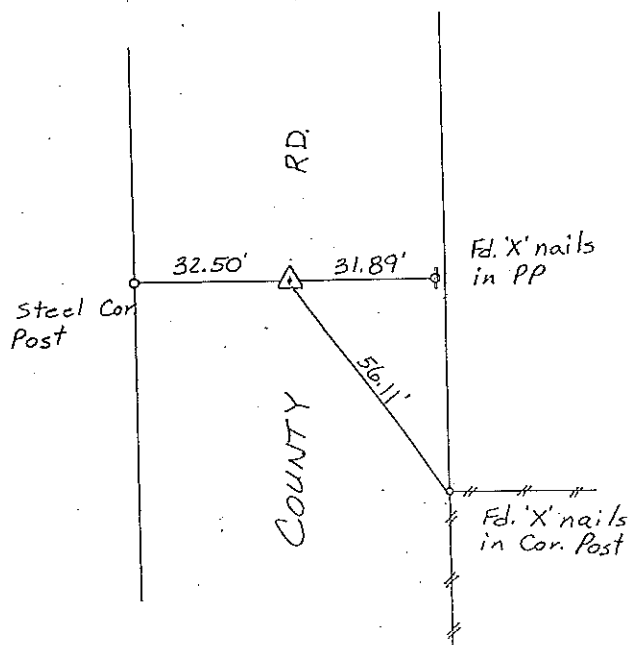
OF
Land Survey Monuments situated in Section 18 13, Township 94N, Range
11W, of the Fifth Principal Meridian, CHICKASAW County, Iowa.
Previously recorded in (NONE) in County Recorder's Office.

(Show reason for preparing this certificate, the evidence and detailed procedures used in establishing the corner positions and monumentation found or placed.)
Monument Description and Remarks: W 1/4 CORNER, SECTION 18-T94N-R11W:

FOUND 1/2" SQ. IRON PIN.

PLAN - VIEW

(Show a minimum of three reference ties to durable physical objects, relevant monuments and physical conditions that will enable recovery of the corner.)



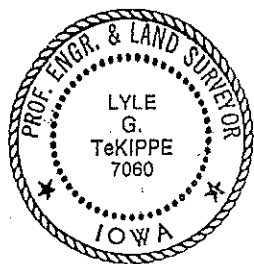
Cor C
13-94-12

W 1/4 CORNER, SECTION 18-T94N-R11W

I hereby certify that the survey work was completed and this certificate was prepared by me or under my direct personal supervision and that I am a duly registered land surveyor under the laws of the state of Iowa.

Signature: Lyle G. TeKippe
Name typed or printed: Lyle G. TeKippe
Date: 9-23-92 Reg. No. 7060

| Corners | List Corners to be Indexed | | |
|---------|----------------------------|-----|-------|
| | Section | Twp | Range |
| W 1/4 | 18 | 94N | 11W |



SEAL

Placed in Tie Book 10/20/92

"County Engineer's Copy"