

Prepared by & Return to: Harold - Reicks Surveying, 18 East Main Street, New Hampton, IA 50659, Ph. 641-394-2725

UNITED STATES PUBLIC LAND SURVEY CORNER CERTIFICATE

Land Survey Monuments situated in Section 17, Township 94 North, Range 12 West of the Fifth Principal Meridian, Chickasaw County, Iowa. 1.) Previously recorded in Bk. 156, Pg. 96 in the County Recorder's office. 2.) Previously recorded in Doc. #2002-0691 in the County Recorder's office.

This certificate is being prepared in compliance with Iowa Code Chapter 355.11 because:

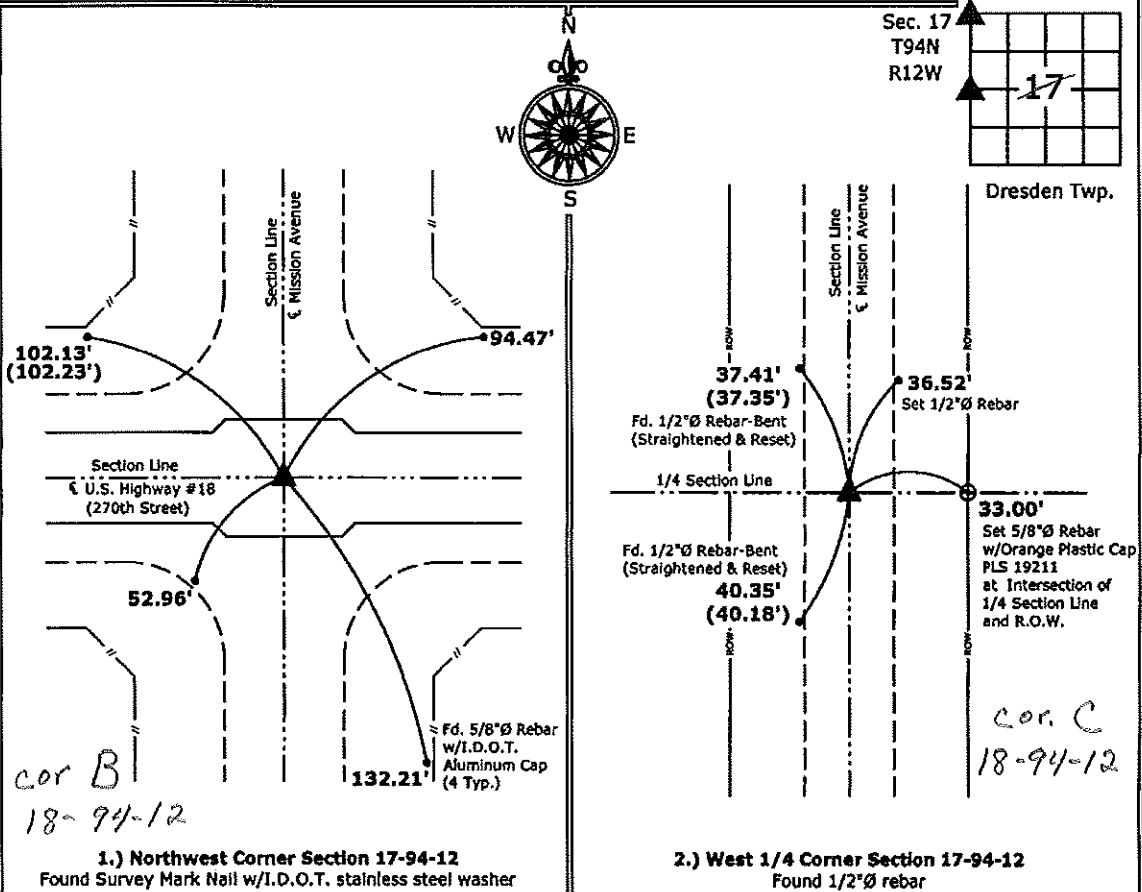
- There is no certificate on file for this corner.
- 1.) & 2.) There are no longer three valid ties of record.
- 1.) & 2.) There are changes to reference ties of record.
- There is change of monumentation of record.
- To clarify description of record monument (ties).

Monument Description and Remarks:

- 1.) Northwest Corner: Found Survey Mark Nail with I.D.O.T. stainless steel washer with information obtained from previous Section Corner Certificate.
- 2.) West 1/4 Corner: Found 1/2"Ø rebar with information obtained from previous Section Corner Certificate.

PLAN - VIEW

(Show a minimum of three reference ties to durable physical objects, relevant monuments and physical conditions that will enable recovery of the corner.)



I hereby certify that this land surveying document was prepared and the related survey work was performed by me or under my direct personal supervision and that I am a duly licensed Land Surveyor under the laws of the State of Iowa.

*Kirk D. Reicks 8-26-11*  
 Kirk D. Reicks Date:

License number 19211  
 My license renewal date is December 31, 2012.  
 Sheets covered by this seal: Individual sheet only

List Corners to be Indexed			
Corners	Section	Twp.	Range
NW	17	94	12
W 1/4	17	94	12

Project Number: 2011-097  
 FB: Chickasaw County 3, Pgs. 71-72

Section 8-94-12  
As referred to in  
Engr. T.C. Book

FILED 2002-0691  
RECORDER'S OFFICE  
CHICKASAW COUNTY, IOWA  
2002 MAR 15 AM 8 51  
CINDY MESSERSMITH  
COUNTY RECORDER

TeKIPPE ENGINEERING, P.C., 128 South Vine Street, West Union, Iowa 52176 Phone (563) 422-5131

UNITED STATES PUBLIC LAND SURVEY CORNER CERTIFICATE

OF 8  
Land Survey Monuments situated in Section 17, Township 94 North, Range 12 West of the Fifth Principal Meridian, CHICKASAW County, Iowa.  
Previously recorded in none in County Recorder's Office.  
(book, page, document number, etc.)

(Show reason for preparing this certificate, the evidence and detailed procedures used in establishing the corner positions and monumentation found or placed.)

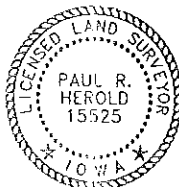
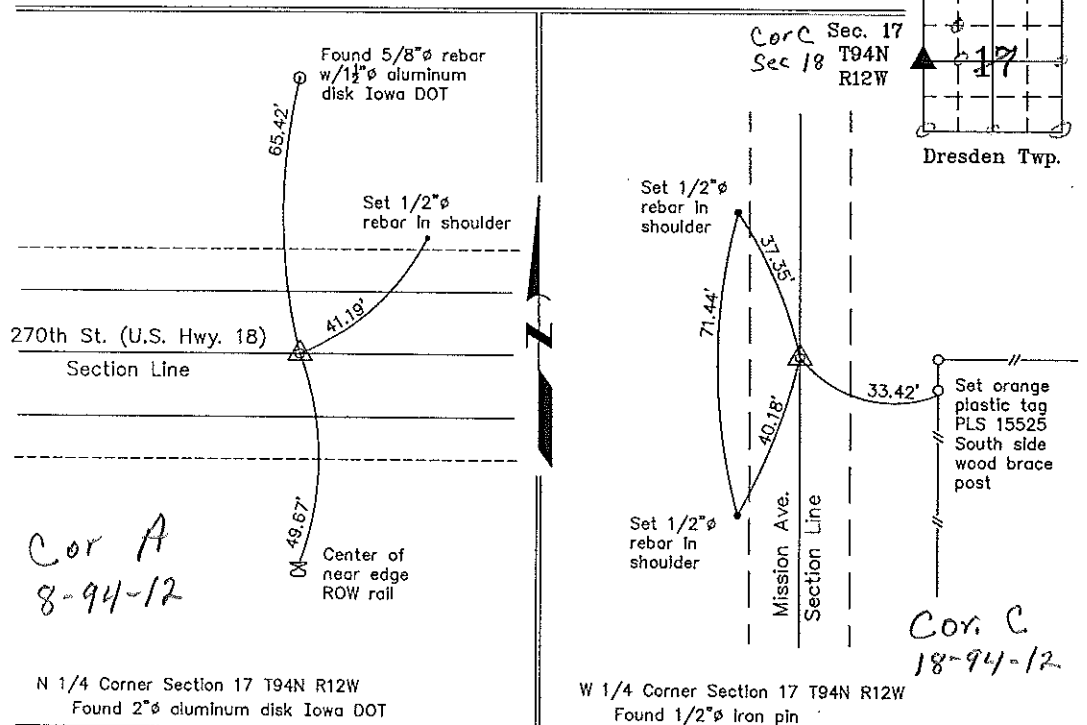
Monument Description and Remarks: N 1/4 Corner Section 17 T94N R12W: Found 2"Ø Iowa DOT aluminum monument.  
W 1/4 Corner Section 17 T94N R12W: Found 1/2"Ø iron pin.

NOTE: Both Corners were found with information obtained from a Cornerstone Survey made by Robert R. Burns, Jr. for Iowa Department of Transportation Project Number F-18-7(19)--21-19.

PLAN - VIEW

Project Number 02028.LS  
FB. 461 PG. 61-68

(Show a minimum of three reference ties to durable physical objects, relevant monuments and physical conditions that will enable recovery of the corner.)



I hereby certify that this land surveying document was prepared and the related survey work was performed by me or under my direct personal supervision and that I am a duly licensed Land Surveyor under the laws of the State of Iowa.

Paul R. Herold 3-13-02  
Paul R. Herold Date  
License number 15525  
My license renewal date is December 31, 2002.  
Sheets covered by this seal: Individual

List Corners to be Indexed			
Corners	Section	Twp.	Range
N 1/4	17	94N	12W
W 1/4	17	94N	12W

Filed 3-21-02

County Engineer  
Cindy Messersmith