

Prepared by & Return to Harold - Reicks Surveying, 19 East Main Street, New Hampton, IA 50658, Ph. 641-394-2725

### UNITED STATES PUBLIC LAND SURVEY CORNER CERTIFICATE

Land Survey Monuments situated in Section 18, Township 94 North, Range 12 West of the Fifth Principal Meridian, Chickasaw County, Iowa. 1., 2.) Previously recorded in Bk. 151, Pg. 181 in the County Recorder's office.

This certificate is being prepared in compliance with Iowa Code Chapter 355.11 because:

- 1 & 2 There is no certificate on file for this corner.
- There are no longer three valid ties of record.
- There are changes to reference ties of record.
- There is change of monumentation of record.
- To clarify description of record monument (ties).

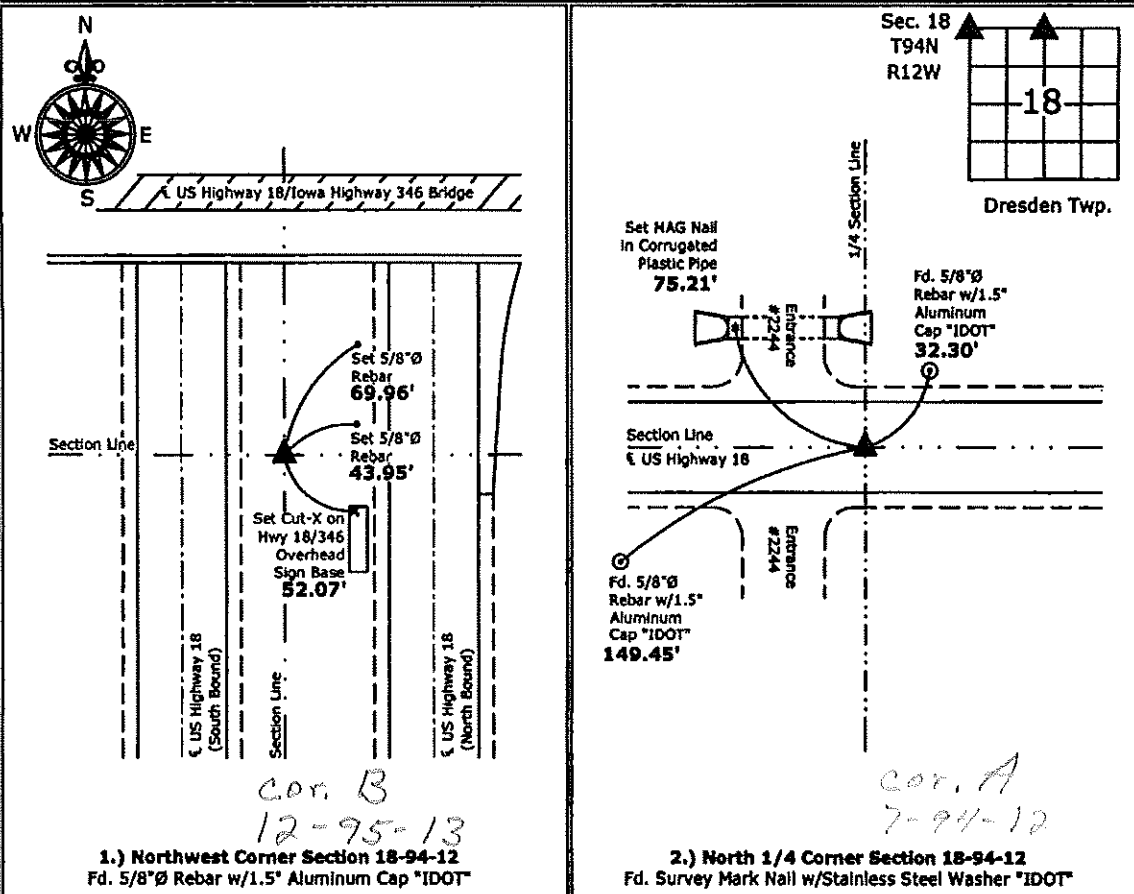
Monument Description and Remarks:

1.) Northwest Corner: Found 5/8"Ø Rebar w/1.5" Aluminum Cap "IDOT" with information obtained from the IDOT Resident Construction Engineer's office, New Hampton, Iowa and with information obtained from the previous Section Corner Certificate, all previous ties were missing, set new ties to update corner.

2.) North 1/4 Corner: Found Survey Mark Nail w/Stainless Steel Washer "IDOT" with information obtained from the IDOT Resident Construction Engineer's office, New Hampton, Iowa and with information obtained from the previous Section Corner Certificate, all previous ties were missing, set new ties to update corner.

#### PLAN - VIEW

(Show a minimum of three reference ties to durable physical objects, relevant monuments and physical conditions that will enable recovery of the corner.)



I hereby certify that this land surveying document was prepared and the related survey work was performed by me or under my direct personal supervision and that I am a duly licensed Land Surveyor under the laws of the State of Iowa.

*Kirk D. Reicks* 3-20-12  
 Kirk D. Reicks Date:  
 License number 19211  
 My license renewal date is December 31, 2012.  
 Sheets covered by this seal: Individual sheet only

List Corners to be Indexed			
Corners	Section	Twp.	Range
NW	18	94	12
N 1/4	18	94	12

Project Number: 2012-024  
 FB: Chickasaw County 4, Pgs. 33

Chickasaw Co. Recorder  
 Cindy Messersmith  
 Fee Book 2016-0078  
 01/18/2016 @0944AM  
 SCC SEC COR CERT # Pages: 1  
 Book: Page: \$7.00  
 Total Fees:

PREPARED BY / RETURN TO: KENNETH D. STARK IOWA DEPARTMENT OF TRANSPORTATION 428 43rd ST. SW MASON CITY, IA 50401 641-423-7584

UNITED STATES PUBLIC LAND SURVEY CORNER CERTIFICATE

OF

Land Survey Monuments situated in Section 18, Township 94N, Range 11W  
 of the Fifth Principal Meridian, CHICKASAW County, Iowa.

Previously recorded in Doc. No. 00855 - Book 149, Page 463 in County Recorder's Office.  
(book, page, document number, etc.)

(Show reason for preparing this certificate, the evidence and detailed procedures used in establishing the corner positions and monumentation found or placed.)

Monument Description and Remarks: NW CORNER: Replaced previously found IDOT Alum Disc with a Survey Mark Nail/IDOT Sec. Cor. washer, on  $\oslash$  US 18 per previous cert of record Doc. No. 00855 after HMA resurfacing project NHSX-018-7(62)--3H-19.

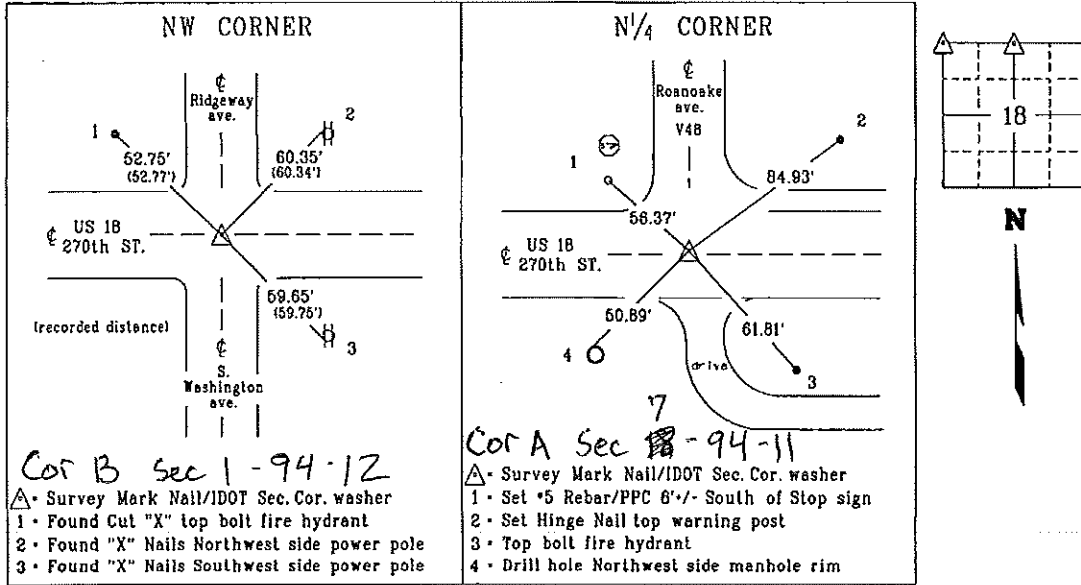
Reason for cert: Monumentation and ties have changed.

N<sup>1</sup>/<sub>4</sub> CORNER: Replaced previously found IDOT Alum Disc with a Survey Mark Nail/IDOT Sec. Cor. washer, 0.6' +/- North  $\oslash$  US 18 per previous cert of record Book 149, Page 463 after HMA resurfacing project NHSX-018-7(62)--3H--19.

Reason for cert: Monumentation and ties have changed.

PLAN - VIEW

(Show a minimum of three reference ties to durable physical objects, relevant monuments and physical conditions that will enable recovery of the corner.)



I hereby certify that this land surveying document was prepared and the related survey work was performed by me or under my personal supervision and that I am duly licensed Land Surveyor under the laws of the state of Iowa.

*Kenneth D. Stark* 01-15-16  
 Kenneth D. Stark Date  
 License number 10898  
 My license renewal date is December 31, 2017  
 Pages or sheets covered by this seal. 1

List Corners to be indexed

Corner	Section	Township	Range
NW CORNER	18	94N	11W
N <sup>1</sup> / <sub>4</sub> CORNER	18	94N	11W

PPC - Pink Plastic Cap

drawn by: cjs 01/16  
 tied by: mc/cs  
 right-of-way

Section 12-94-12  
As referred to in  
Engr. Tie Book

SLST 9-90

UNITED STATES PUBLIC LAND SURVEY CORNER CERTIFICATE

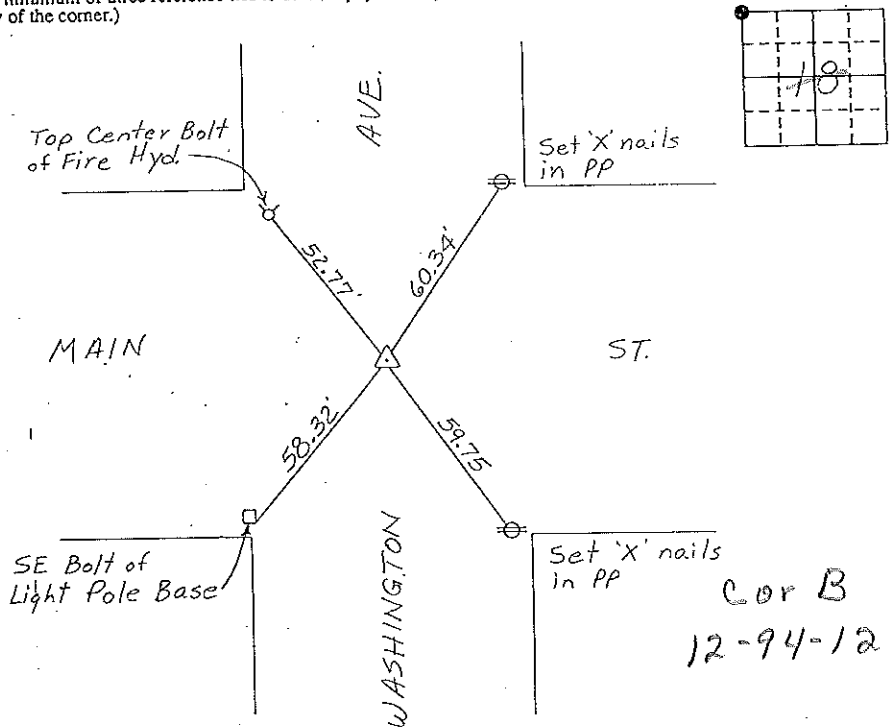
OF  
Land Survey Monuments situated in Section 18 12, Township 94N, Range  
11W, of the Fifth Principal Meridian, CHICKASAW County, Iowa.  
Previously recorded in (NONE) in County Recorder's Office.  
(book, page, document number, etc.)

(Show reason for preparing this certificate, the evidence and detailed procedures used in establishing the corner positions and monumentation found or placed.)

Monument Description and Remarks: NW CORNER, SECTION 18-T94N-R11W:  
FOUND IDOT ALUMINUM CAP.

PLAN - VIEW

(Show a minimum of three reference ties to durable physical objects, relevant monuments and physical conditions that will enable recovery of the corner.)

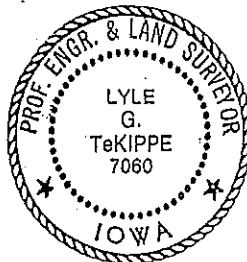


NW CORNER, SECTION 18-T94N-R11W

I hereby certify that the survey work was completed and this certificate was prepared by me or under my direct personal supervision and that I am a duly registered land surveyor under the laws of the state of Iowa.

Signature: Lyle G. TeKippe  
Name typed or printed: Lyle G. TeKippe  
Date: 9-23-92 Reg. No. 7060

Corners	List Corners to be Indexed		
	Section	Twp	Range
NW	18	94N	11W



SEAL

*Placed  
in Tie Book  
10/20/92*

"County Engineers Copy"

# UNITED STATES PUBLIC LAND SURVEY CORNER CERTIFICATE

SLSI 9-91

Section 7-94-12  
As referred to in  
Engr Tie Book

OF  
7

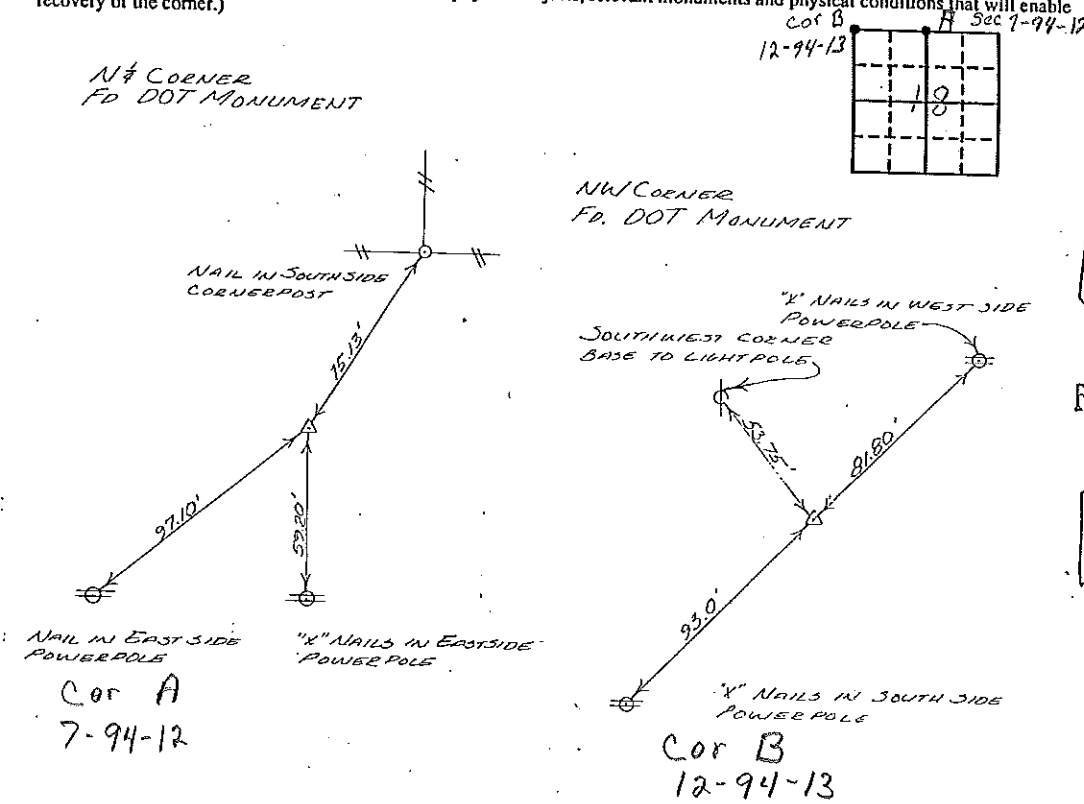
Land Survey Monuments situated in Section 18, Township 94N, Range 12W, of the Fifth Principal Meridian, CHICKASAW County, Iowa. Previously recorded in \_\_\_\_\_ in County Recorder's Office.

(Show reason for preparing this certificate, the evidence and detailed procedures used in establishing the corner positions and monumentation found or placed.)

Monument Description and Remarks: \_\_\_\_\_  
\_\_\_\_\_  
\_\_\_\_\_  
\_\_\_\_\_

### PLAN - VIEW

(Show a minimum of three reference ties to durable physical objects, relevant monuments and physical conditions that will enable recovery of the corner.)



I hereby certify that the survey work was completed and this certificate was prepared by me or under my direct personal supervision and that I am a duly registered land surveyor under the laws of the state of Iowa.

Signature: L.P. Erdman  
Name typed or printed: L.P. Erdman

Date: 12-08-92 Reg. No. 2886

Corners	List Corners to be Indexed		
	Section	Twp	Range
NW	18	94	12
NW	18	94	12 W

Placed in tie book 2/2

