

Prepared by & Return to Harold - Reicks Surveying, 18 East Main Street, New Hampton, IA 50659, Ph. 641-394-2725

UNITED STATES PUBLIC LAND SURVEY CORNER CERTIFICATE

Land Survey Monuments situated in Section 17, Township 94 North, Range 12 West of the Fifth Principal Meridian, Chickasaw County, Iowa. 1.) Previously recorded in Bk. 156, Pg. 96 In the County Recorder's office. 2.) Previously recorded in Doc. #2002-0691 In the County Recorder's office.

This certificate is being prepared in compliance with Iowa Code Chapter 355.11 because:

- There is no certificate on file for this corner.
- 1.) & 2.) There are no longer three valid ties of record.
- 1.) & 2.) There are changes to reference ties of record.
- There is change of monumentation of record.
- To clarify description of record monument (ties).

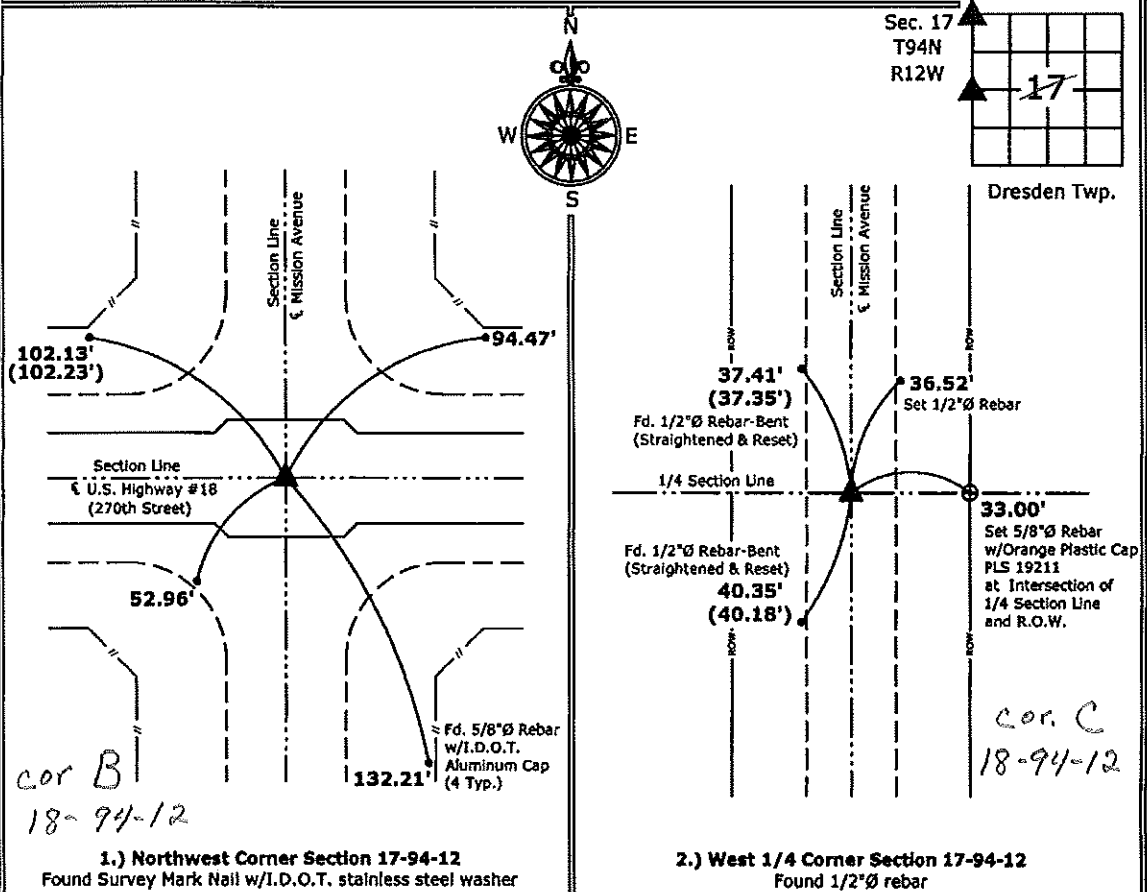
Monument Description and Remarks:

1.) Northwest Corner: Found Survey Mark Nail with I.D.O.T. stainless steel washer with information obtained from previous Section Corner Certificate.

2.) West 1/4 Corner: Found 1/2"Ø rebar with information obtained from previous Section Corner Certificate.

PLAN - VIEW

(Show a minimum of three reference ties to durable physical objects, relevant monuments and physical conditions that will enable recovery of the corner.)



I hereby certify that this land surveying document was prepared and the related survey work was performed by me or under my direct personal supervision and that I am a duly licensed Land Surveyor under the laws of the State of Iowa.

*Kirk D. Reicks 8-26-11*  
Kirk D. Reicks Date:

License number 19211  
My license renewal date is December 31, 2012.  
Sheets covered by this seal: Individual sheet only

List Corners to be Indexed			
Corners	Section	Twp.	Range
NW	17	94	12
W 1/4	17	94	12

Project Number: 2011-097  
FB: Chickasaw County 3, Pgs. 71-72

Section 7-94-12  
 As referred to in  
 Engg. Tie Book

SLSI 9-90

UNITED STATES PUBLIC LAND SURVEY CORNER CERTIFICATE

OF 7

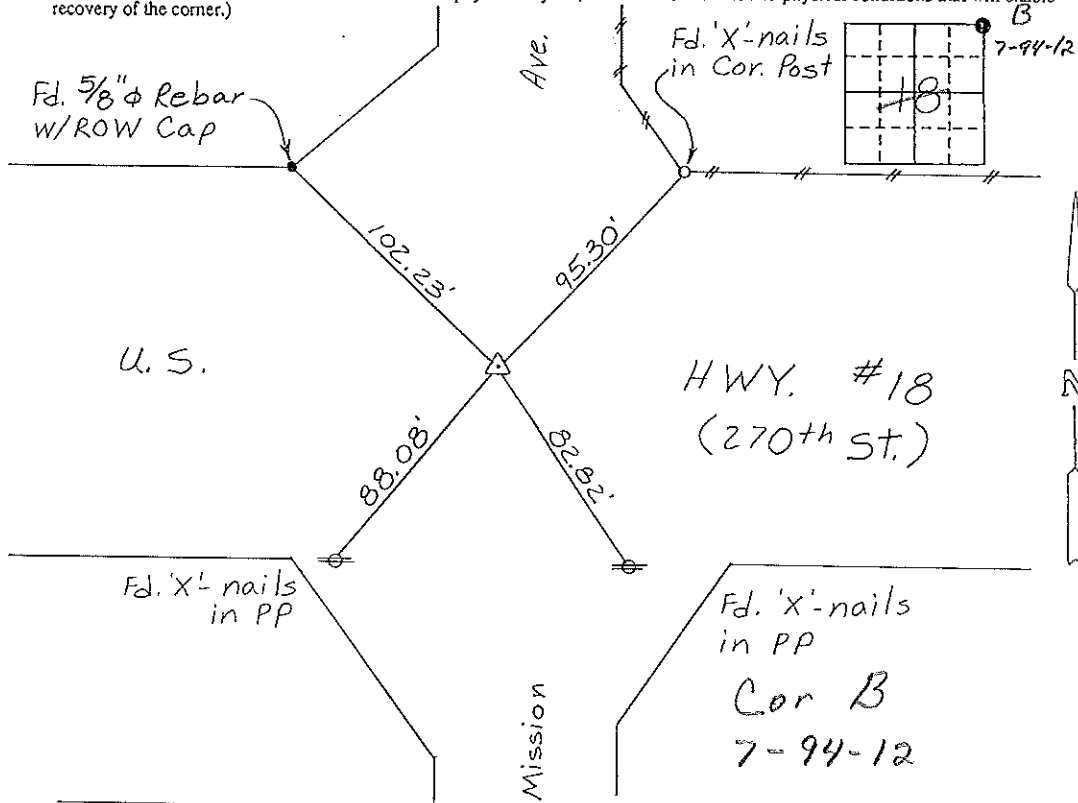
Land Survey Monuments situated in Section 18, Township 94 NORTH, Range 12 WEST, of the Fifth Principal Meridian, CHICKASAW County, Iowa. Previously recorded in NONE in County Recorder's Office.

(book, page, document number, etc.)  
 (Show reason for preparing this certificate, the evidence and detailed procedures used in establishing the corner positions and monumentation found or placed.)

Monument Description and Remarks: NE CORNER, SECTION 18-T94N-R12W:  
Found IDOT Aluminum Cap in Asphalt.

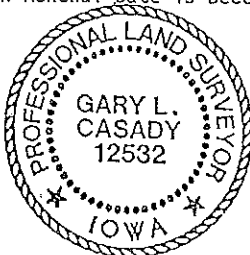
PLAN - VIEW

(Show a minimum of three reference ties to durable physical objects, relevant monuments and physical conditions that will enable recovery of the corner.)



I hereby certify that the survey work was completed and this certificate was prepared by me or under my direct personal supervision and that I am a duly registered land surveyor under the laws of the state of Iowa.

Signature: Gary L. Casady  
 Name typed or printed: Gary L. Casady  
 Date: 9-28-94 Reg. No. 12532  
 My Registration Renewal Date is December 31, 1994



SEAL

Corners	List Corners to be Indexed Section	Twp	Range
NE	18	94N	12W
Cor	B	7-94-12	

Placed in  
 Tie Book  
 JFM