

GINDY MESSERSMITH
 COUNTY RECORDER

Section 24-94-12
 As referred to in
 Engr. Tie Book

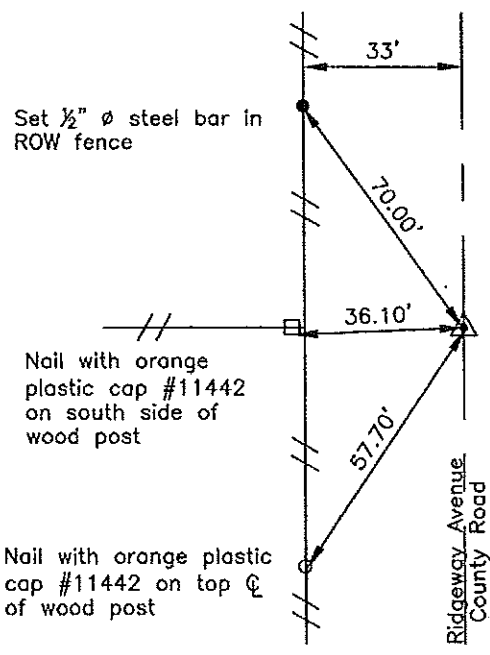
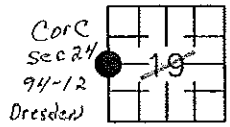
Prepared by: Erdman Engineering, P.C. 708 Commerce Drive, P.O. Box 246 Decorah, Iowa 52101,(563)382-4194

United States Public Land Survey Corner Certificate
 of 24

Land Survey Monuments situated in Section 19, Township 94, Range 11 West of the 5th Principal Meridian in Chickasaw County, Iowa. Previously recorded in does not apply in the county Recorder's Office.

Monument Description and Remarks: This certificate is prepared in accordance with Section 193C of the Code of Iowa. No previous certificate has been filed for this corner location. Based on Chickasaw County Engineer's Reference Ties we searched for the tie markers previously set. We did not find the ties as they appear to have been removed. We searched an area $\pm 25'$ east-west x $\pm 15'$ north south with a magnetic locator, for the iron pin set previously. We did not find the iron pin as it appears to have been graded out. County Engineer's Ties show that the monument was 33' from the west right-of-way fence and in line with the fence line running west. Based on this we set a $\frac{1}{2}$ " diameter steel bar with 1 $\frac{1}{2}$ " aluminum cap #11442, 33' from the west right-of-way fence and in line with the fence line running west, as the W $\frac{1}{4}$ Corner of Section 19, Township 94 North, Range 11 West.

Plan-View



Cor C
 24-94-12



I hereby certify that the survey work was completed and this certificate was prepared by me or under my direct supervision and that I am a duly registered land surveyor under the laws of the State of Iowa.

Signature Lindsay Erdman
 Lindsay Erdman P.E. and L.S.
 Date: 2/9/03 Reg. No. 11442

My license renewal date is December 31, 2004

Corner(s) to be Indexed

Corner	Section	Township	Range
W 1/4	19	94	11

Filed 2-20-03