

Jeffrey P. Helland, 1107 Technology Parkway, Cedar Falls, Iowa 50613-6951, (319)-266-0161

UNITED STATES PUBLIC LAND SURVEY CORNER CERTIFICATE OF

LAND SURVEY MONUMENTS SITUATED IN SECTION NO. 19, TOWNSHIP NO. 94 NORTH, RANGE NO. 12 WEST OF THE FIFTH PRINCIPAL MERIDIAN, CHICKASAW COUNTY, IOWA.
PREVIOUSLY RECORDED IN N/A

(SHOW REASON FOR PREPARING THIS CERTIFICATE, THE EVIDENCE AND DETAILED PROCEDURES USED IN ESTABLISHING THE CORNER POSITIONS AND MONUMENTATION FOUND OR PLACED.)

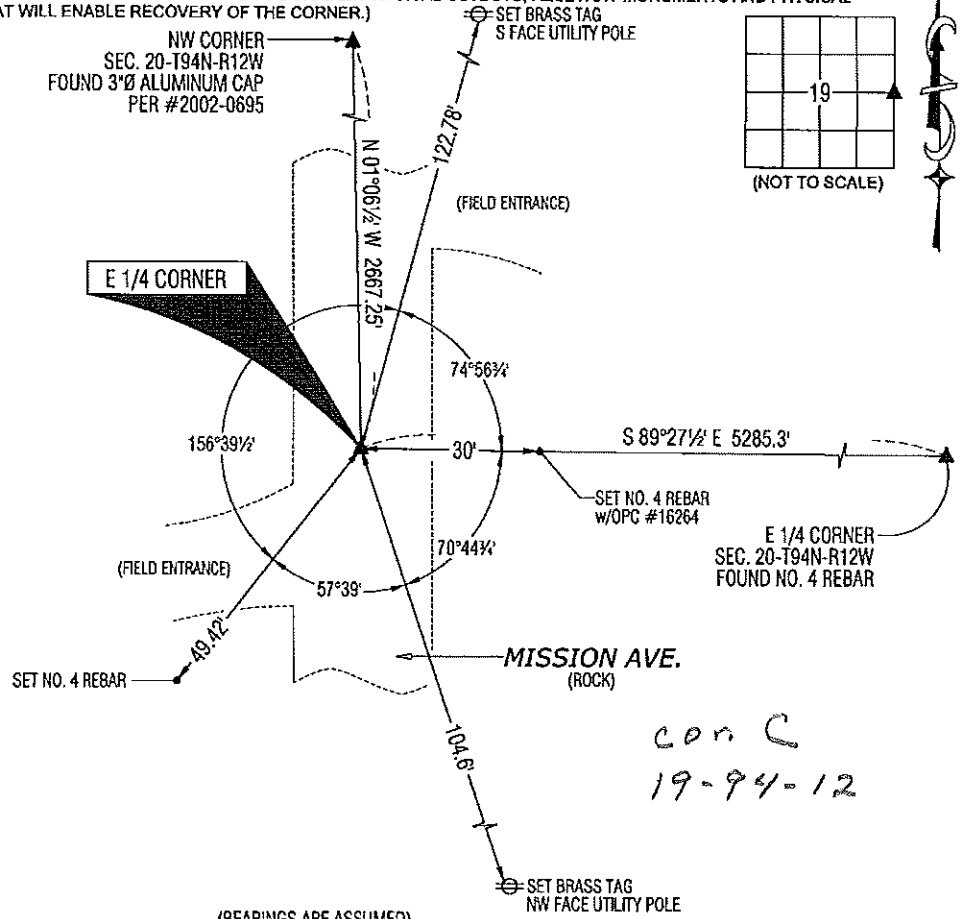
MONUMENT DESCRIPTION AND REMARKS:

NO USPLSCC ON FILE. SURVEY COMPLETED IN THE NW 1/4 OF SEC. 20-T94N-R12W.

→ E 1/4 CORNER: CHICKASAW COUNTY ENGINEER'S REFERENCE TIES (NO DATE) CALLS FOR [FOUND STONE 33' FROM IRON POST TO EAST]. REFERENCE TIES PROVIDED BY THE I.D.O.T. DATED 9/13/1983 CALLS FOR [FOUND GRANITE STONE 12" DEEP. SET 1/2" RE-ROD OVER HIGH POINT.]. FOUND NO. 4 REBAR (1.0' LONG) w/YPC "CHICKASAW COUNTY" (0.2' ± DEEP). REMOVED PIN AND VERIFIED STONE @ 1.5' DEPTH. TYPE AND SIZE OF STONE UNKNOWN. UTILIZED SAID REBAR AS CORNER.

PLAN VIEW

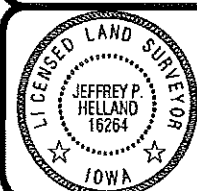
(SHOW A MINIMUM OF THREE REFERENCE TIES TO DURABLE PHYSICAL OBJECTS, RELEVANT MONUMENTS AND PHYSICAL CONDITIONS THAT WILL ENABLE RECOVERY OF THE CORNER.)



(BEARINGS ARE ASSUMED)

HES HELLAND ENGINEERING & SURVEYING, LTD.
1107 Technology Parkway
Cedar Falls, Iowa 50613-6951
(319)-266-0161

SHINER = 8D NAIL & 1 5/16" Ø METAL SHINER
BRASS TAG = 8D NAIL & 13/16" Ø BRASS TAG
OPC = PLASTIC CAP (O=ORANGE, R=RED, Y=YELLOW)
(Ø) RECORDED AS FILE NAME: 10-246G2.DWG



I hereby certify that this land surveying document was prepared and the related survey work was performed by me or under my direct personal supervision and that I am a duly licensed Land Surveyor under the laws of the State of Iowa.
Jeffrey P. Helland 10/29/10
Jeffrey P. Helland
License Number 16264
My license renewal date is December 31, 2011.
All pages or sheets are covered by this seal except:

LIST CORNERS TO BE INDEXED			
CORNER	SECTION	TOWNSHIP	RANGE
E 1/4 CORNER	19	94N	12W
W 1/4 CORNER	20	94N	12W

*con C
19-94-12*