

*Fee \$700*  
2005 JAN 14 AM 8 38

CINDY MESSERSMITH  
COUNTY RECORDER

Jeffrey P. Helland, 1107 Technology Parkway, Cedar Falls, Iowa 50613-6951, (319)-266-0161

**UNITED STATES PUBLIC LAND SURVEY CORNER CERTIFICATE  
OF**

LAND SURVEY MONUMENTS SITUATED IN SECTION NO. 16, TOWNSHIP NO. 94 NORTH, RANGE  
NO. 12 WEST OF THE FIFTH PRINCIPAL MERIDIAN, CHICKASAW COUNTY, IOWA.

PREVIOUSLY RECORDED IN BOOK \_\_\_\_\_, PAGE \_\_\_\_\_.

(SHOW REASON FOR PREPARING THIS CERTIFICATE, THE EVIDENCE AND DETAILED PROCEDURES USED IN ESTABLISHING THE  
CORNER POSITIONS AND MONUMENTATION FOUND OR PLACED.)

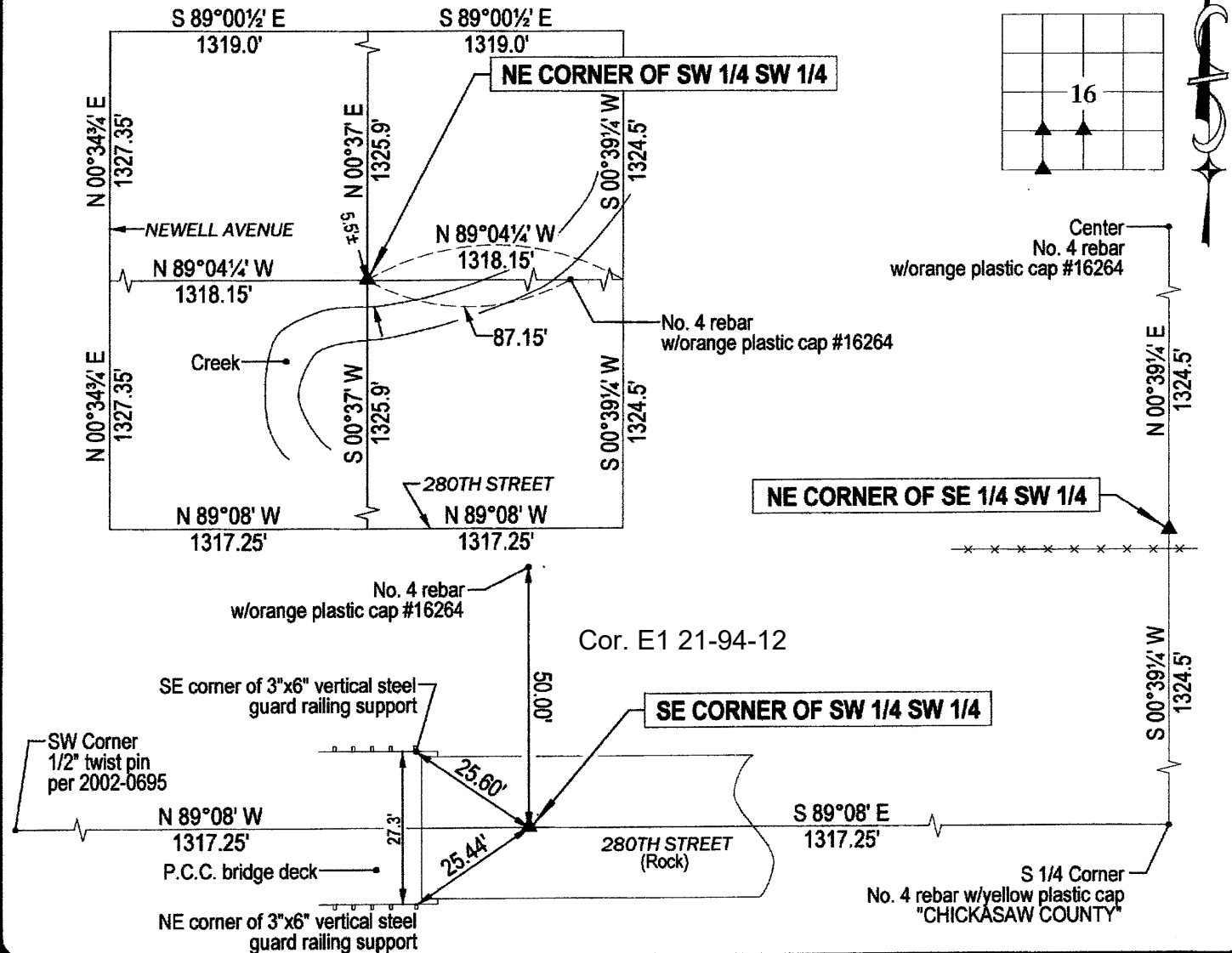
**MONUMENT DESCRIPTION AND REMARKS:**

No corner certificates on file. Survey completed in the SW 1/4 of Sec. 16-T94N-R12W.

- NE CORNER of SE 1/4 SW 1/4: No Chickasaw County Engineer reference ties exist. Set No. 4 rebar w/orange plastic cap #16264 at midpoint of line between the Center and the S 1/4 Corner. Leaning CP is 2.4' S & 3.6' E.
- NE CORNER of SW 1/4 SW 1/4: No Chickasaw County Engineer reference ties exist. Set No. 4 rebar w/orange plastic cap #16264 at intersection of 1/16 corners.
- NE CORNER of SW 1/4 SW 1/4: No Chickasaw County Engineer reference ties exist. Set "cotton gin spike" in rock road at midpoint of line between the S 1/4 Corner and SW corner.

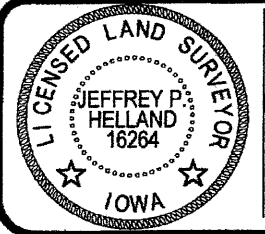
**PLAN VIEW**

(SHOW A MINIMUM OF THREE REFERENCE TIES TO DURABLE PHYSICAL OBJECTS, RELEVANT MONUMENTS AND PHYSICAL  
CONDITIONS THAT WILL ENABLE RECOVERY OF THE CORNER.)



**HES** **HELLAND ENGINEERING & SURVEYING, LTD.**  
1107 Technology Parkway  
Cedar Falls, Iowa 50613-6951  
(319)-266-0161

(00.00)β - Per Chickasaw County Engineer ties  
(00.00) - Recorded As  
File Name: 05-102c2.drg



I hereby certify that this land surveying document was prepared and the related survey work was performed by me or under my direct personal supervision and that I am a duly licensed Land Surveyor under the laws of the State of Iowa.  
*Jeffrey P. Helland* 1/12/05  
Jeffrey P. Helland  
License Number 16264  
My license renewal date is December 31, 2005.  
All pages or sheets are covered by this seal except:

**LIST CORNERS TO BE INDEXED**

CORNER	SECTION	TOWNSHIP	RANGE
NE COR. SE 1/4 SW 1/4	16	94N	12W
NE COR. SW 1/4 SW 1/4	16	94N	12W
SE COR. SW 1/4 SW 1/4	16	94N	12W

*Rec*