

UNITED STATES PUBLIC LAND SURVEY CORNER CERTIFICATE

OF

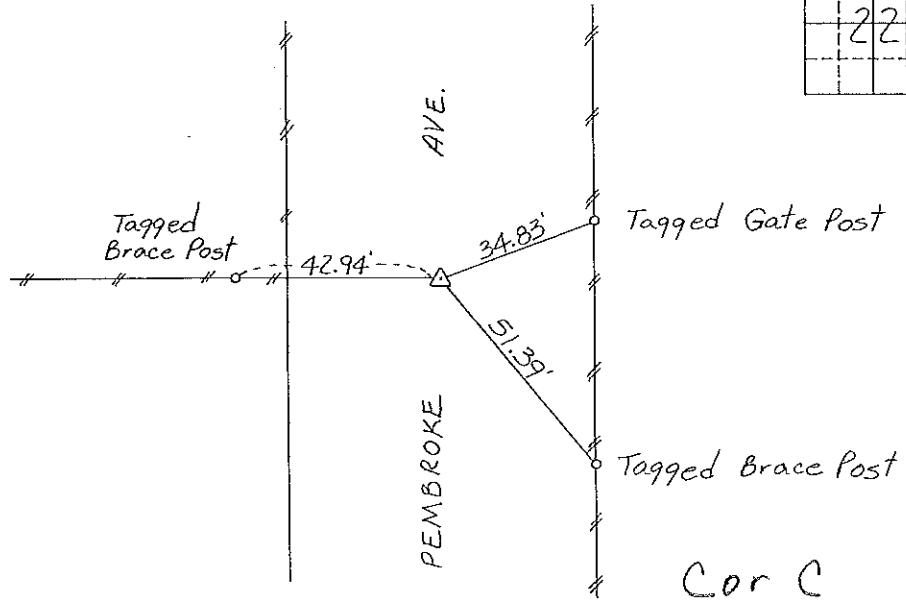
Land Survey Monuments situated in Section 22, Township 94 North, Range 12 West, of the Fifth Principal Meridian, CHICKASAW County, Iowa.
 Previously recorded in NONE in County Recorder's Office.
(book, page, document number, etc.)

(Show reason for preparing this certificate, the evidence and detailed procedures used in establishing the corner positions and monumentation found or placed.)

Monument Description and Remarks: E 1/4 CORNER, SECTION 22-T94N-R12W:
Set 1/2" Rebar with cap on E of County Road & in Line with
1/4 Section Line Fence E-W.

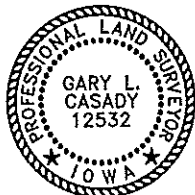
PLAN - VIEW

(Show a minimum of three reference ties to durable physical objects, relevant monuments and physical conditions that will enable recovery of the corner.)



I hereby certify that the survey work was completed and this certificate was prepared by me or under my direct personal supervision and that I am a duly registered land surveyor under the laws of the state of Iowa.

Signature: Gary L. Casady
 Gary L. Casady
 Date: 2-8-95 Reg. No. 12532
 My Registration Renewal Date is December 31, 1996



Seal

List Corners to be Indexed			
Corners	Section	Twp.	Range
E 1/4	22	94N	12W
Cor C	22-94-12		

Placed in the Book 3/1/95