



Prepared by & Return to: Kirk D. Reicks, HRS, LLC, 10 East Main Street, New Hampton, IA 50659, Phone 641-394-2725

### United States Public Land Survey Corner Certificate

Land Survey Monument situated in  
 Section 15, Township 94 North, Range 12 West of the Fifth Principal Meridian, Chickasaw County, Iowa.  
 Not on file in the County Recorder's Office.

This certificate is being prepared in compliance with Iowa Code Chapter 355.11 because:

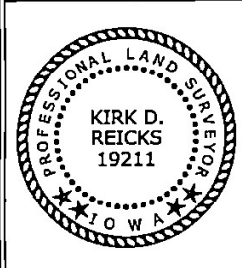
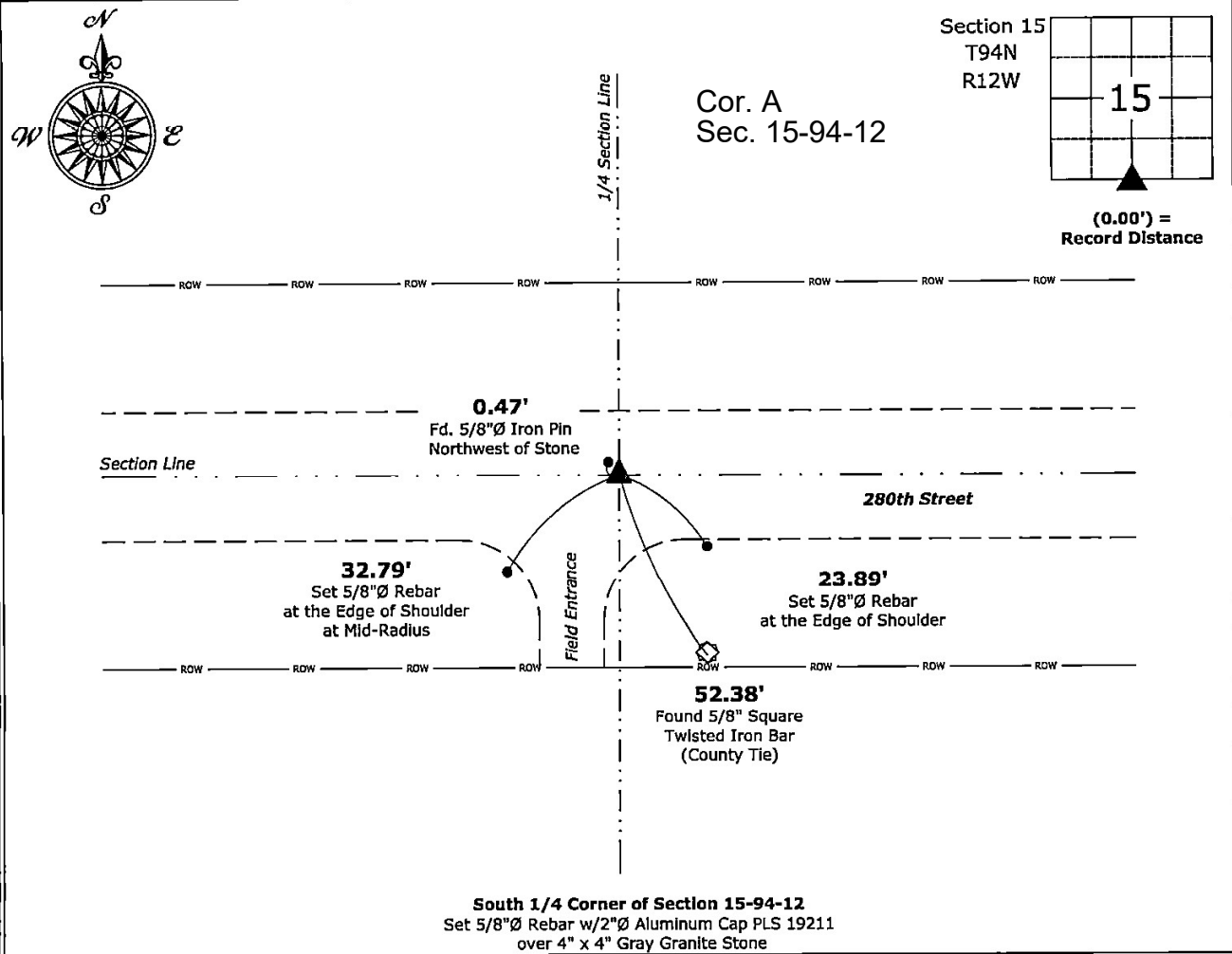
- There is no certificate on file for this corner.
- There are no longer three valid ties of record.
- There are changes to reference ties of record.
- There is change of monumentation of record.
- To clarify description of record monument (ties).

**Monument Description and Remarks:**

**South 1/4 Corner:**  
 Found 4" x 4" Gray Granite Stone with 5/8"Ø Iron Pin Northwest of Stone, 3' Deep with information obtained the from County Engineer's Office.  
 Set 5/8"Ø Rebar w/2"Ø Aluminum Cap PLS 19211 over stone to perpetuate the Monument. (Used Stone as the South 1/4 Corner)

### Plan View - Not to Scale

(Show a minimum of three reference ties to durable physical objects, relevant monuments and physical conditions that will enable recovery of the corner.)



I hereby certify that this land surveying document was prepared and the related survey work was performed by me or under my direct personal supervision and that I am a duly licensed Land Surveyor under the laws of the State of Iowa.

*Kirk D. Reicks* 1-15-2024  
 Kirk D. Reicks Date:  
 License number 19211  
 My license renewal date is December 31, 2024.  
 Sheets covered by this seal: Individual sheet only

List Corner to be Indexed			
Corner	Section	Township	Range
S 1/4	15	94	12

Project Number: 2023-156  
 FB: Chickasaw 12, Page(s) 44-46

File: S:\\_Projects - NHO\County Control Systems - NHO\CHICKASAW\CHICK-43 - 2022.dwg, 1/15/2024 5:15:10 PM