

Section 15-94-12
 As referred to in
 Engr. Tie Book

UNITED STATES PUBLIC LAND SURVEY CORNER CERTIFICATE

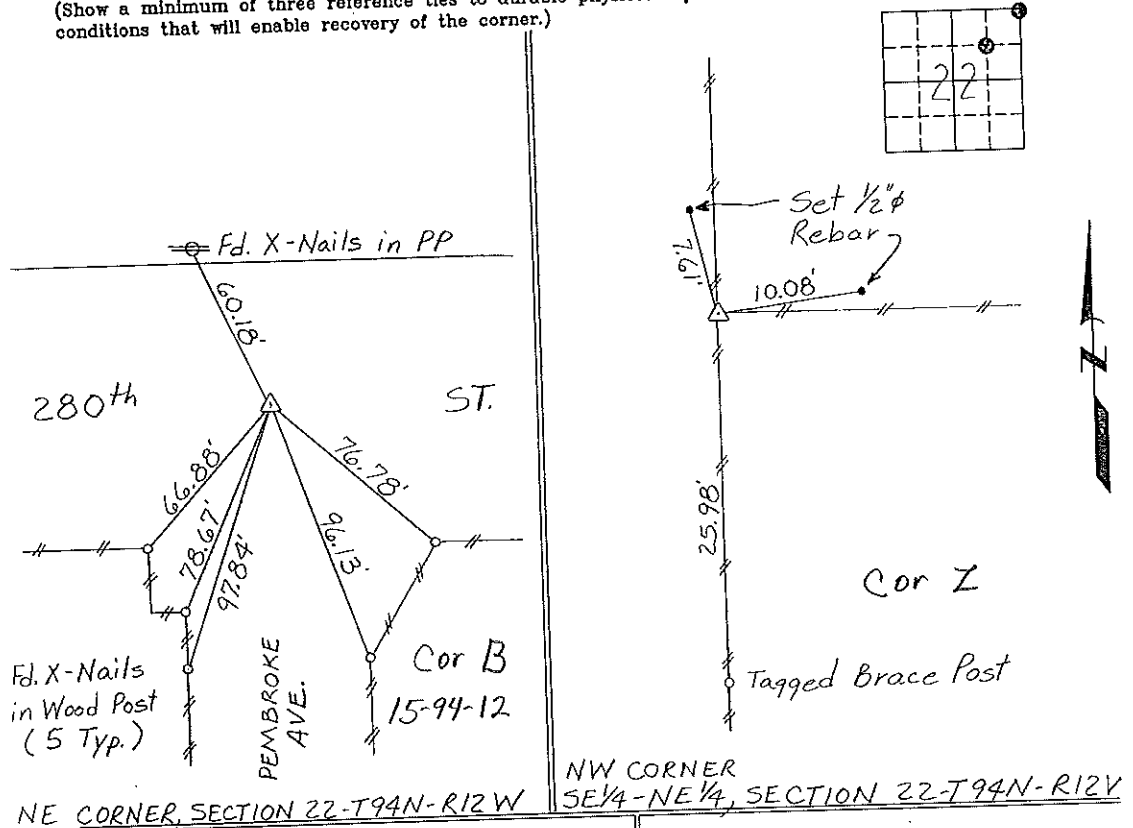
OF
 Land Survey Monuments situated in Section 22¹⁵, Township 94 North, Range
12 West, of the Fifth Principal Meridian, CHICKASAW County, Iowa.
 Previously recorded in NONE in County Recorder's Office.
(book, page, document number, etc.)

(Show reason for preparing this certificate, the evidence and detailed procedures used in establishing the corner positions and monumentation found or placed.)

Monument Description and Remarks: NE CORNER, SECTION 22-T94N-R12W:
Found T-Bar with cap.
NW CORNER, SE 1/4-NE 1/4, SECTION 22-T94N-R12W: Set 1/2" Rebar
with cap @ Existing Angle Iron Fence corner. Checked Corner
relative to N 1/4 Corner, NE Corner, E 1/4 Corner & Post @ Center
of Section.

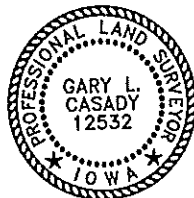
PLAN - VIEW

(Show a minimum of three reference ties to durable physical objects, relevant monuments and physical conditions that will enable recovery of the corner.)



I hereby certify that the survey work was completed and this certificate was prepared by me or under my direct personal supervision and that I am a duly registered land surveyor under the laws of the state of Iowa.

Signature: Gary L. Casady
 Date: 2-8-95 Reg. No. 12532
 My Registration Renewal Date is December 31, 1996



List Corners to be Indexed			
Corners	Section	Twp.	Range
NE Cor B	22	94N	12W
NW CORNER	22	94N	12W
SE 1/4-NE 1/4	22	94N	12W
Cor X	22-94-12		

Placed on Tie Book
 3/1/95