

2006-1890  
9/11/2006

TeKIPPE ENGINEERING, P.C., 128 South Vine Street, West Union, Iowa 52175 Phone (563) 422-5131

UNITED STATES PUBLIC LAND SURVEY CORNER CERTIFICATE

OF

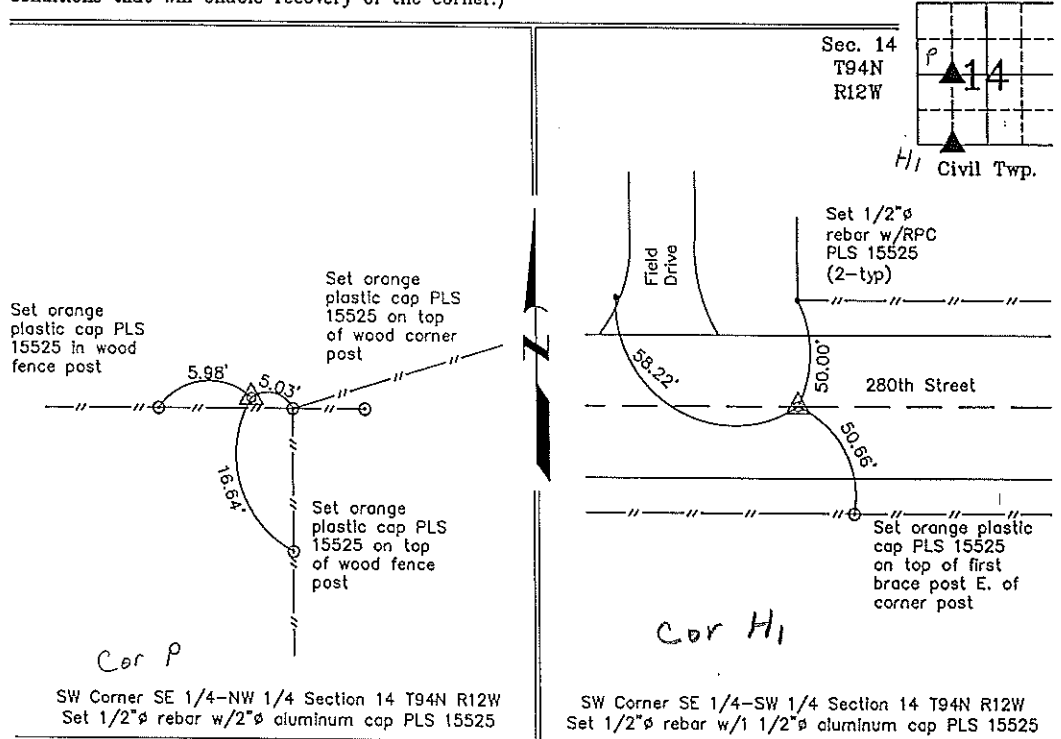
Land Survey Monuments situated in Section 14, Township 94 North, Range 12 West of the Fifth Principal Meridian, Chickasaw County, Iowa.  
Previously recorded in none in County Recorder's Office.  
(book, page, document number, etc.)

(Show reason for preparing this certificate, the evidence and detailed procedures used in establishing the corner positions and monumentation found or placed.)

Monument Description and Remarks: SW Corner SE 1/4-NW 1/4 Section 14 T94N R12W  
Set 1/2"Ø rebar with 2"Ø aluminum cap PLS 15525, equidistant and on Line between  
the West 1/4 Corner and Center of Section.  
SE Corner SW 1/4-SW 1/4 Section 14 T94N R12W: Set 1/2"Ø rebar with 2"Ø aluminum  
cap PLS 15525, equidistant and on Line between the SW Corner and the S 1/4 Corner.

PLAN - VIEW

(Show a minimum of three reference ties to durable physical objects, relevant monuments and physical conditions that will enable recovery of the corner.)



I hereby certify that this land surveying document was prepared and the related survey work was performed by me or under my direct personal supervision and that I am a duly licensed Land Surveyor under the laws of the State of Iowa.

*Paul R. Herold* 9-8-06

Paul R. Herold Date  
License number 15525  
My license renewal date is December 31, 2008.  
Sheets covered by this seal: Individual

List Corners to be Indexed			
Corners	Section	Twp.	Range
SW-SE-NW	14	94N	12W
SW-SE-SW	14	94N	12W

Project Number 08207,LS  
FB 7-Burg 1, PGS, 21-22  
X:\Section Corners\Sec. 14\14-94-12W.dwg

COUNTY ENGINEER  
COPY