

UNITED STATES PUBLIC LAND SURVEY CORNER CERTIFICATE

OF

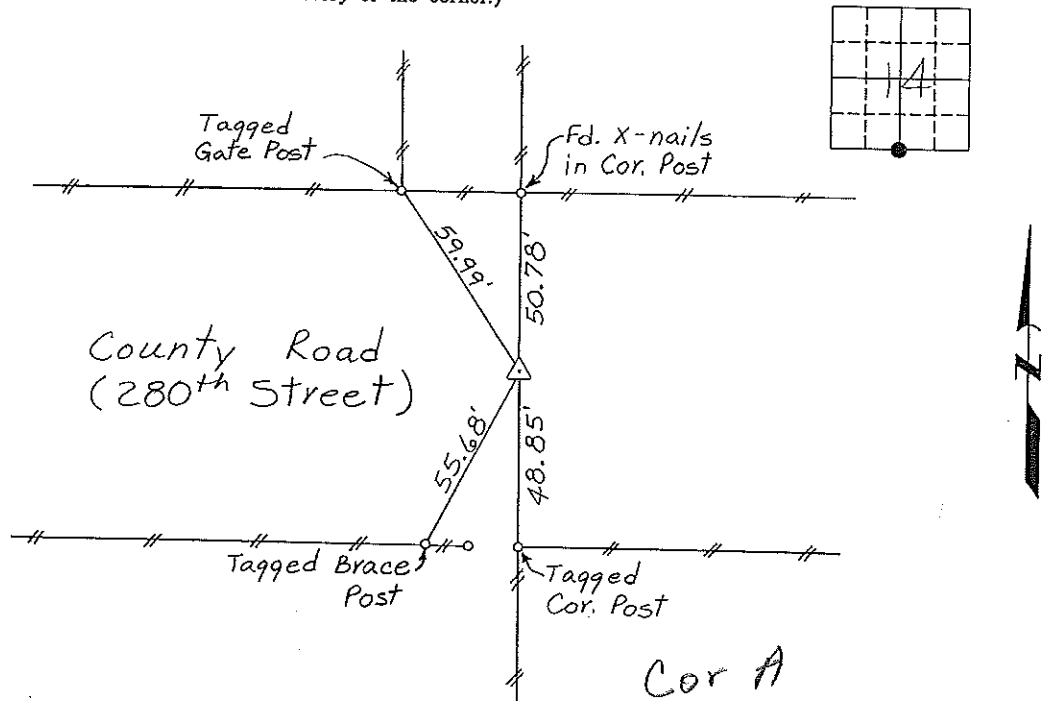
Land Survey Monuments situated in Section 14, Township 94 North, Range 12 West, of the Fifth Principal Meridian, CHICKASAW County, Iowa
 Previously recorded in NONE in County Recorder's Office
(book, page, document number, etc.)

(Show reason for preparing this certificate, the evidence and detailed procedures used in establishing the corner positions and monumentation found or placed.)

Monument Description and Remarks: S¹/₄ CORNER, SECTION 14-T94N-R12W:
Found 1/2" Twisted Iron Pin.

PLAN - VIEW

(Show a minimum of three reference ties to durable physical objects, relevant monuments and physical conditions that will enable recovery of the corner.)



I hereby certify that the survey work was completed and this certificate was prepared by me or under my direct personal supervision and that I am a duly registered land surveyor under the laws of the state of Iowa.

Signature: Gary L. Casady
 Gary L. Casady

Date: 11-2-94 Reg. No. 12532
 My Registration Renewal Date is December 31, 1994

Seal

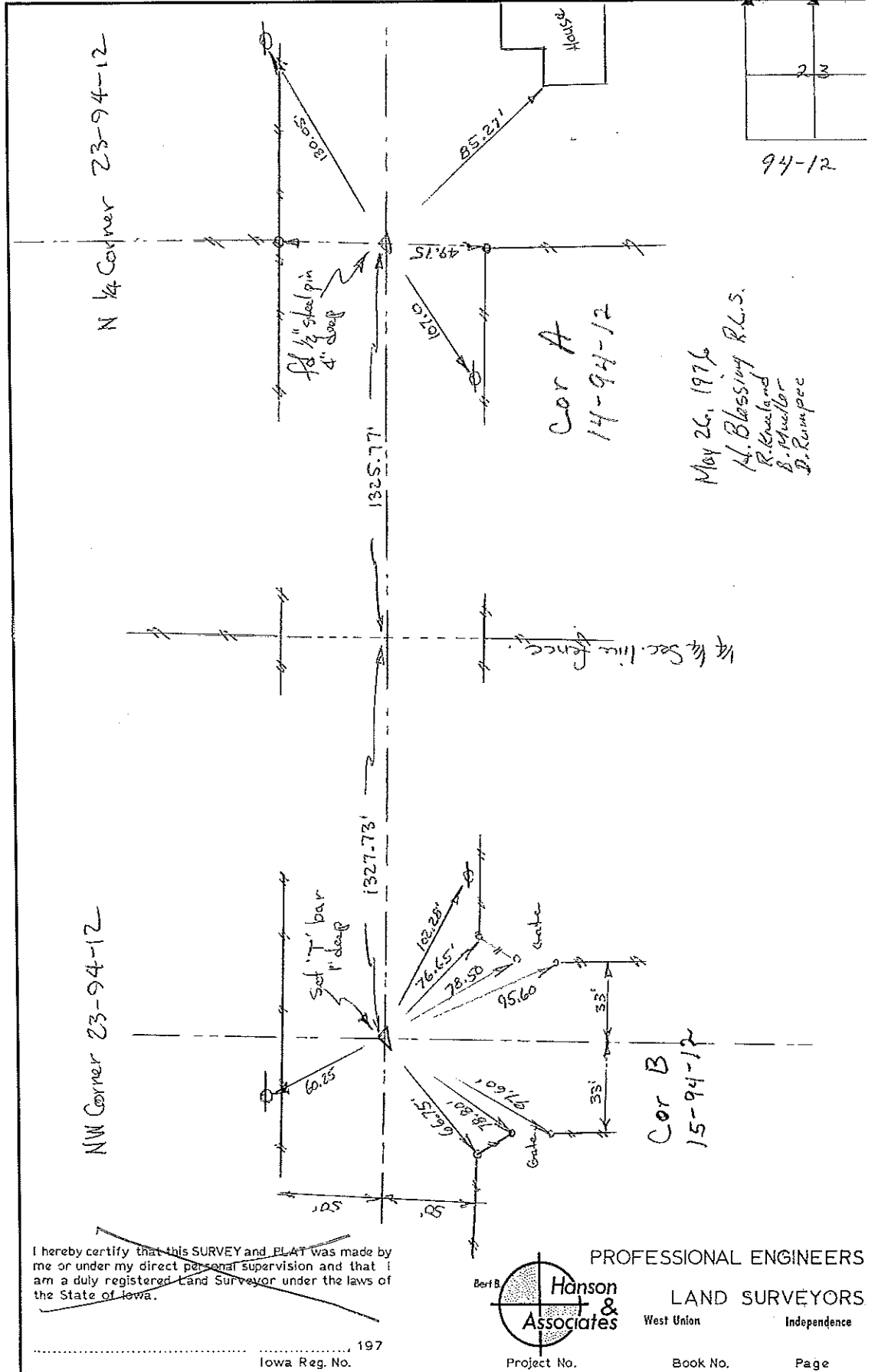


| Corners | Section | Twp. | Range |
|-------------------------------|---------|------|-------|
| S ¹ / ₄ | 14 | 94N | 12W |

Corner A - 94-94-12

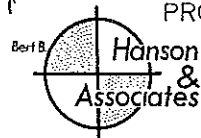
Take to Chickasaw Co. Eng's. office

Cor B Sec 15 H.P. Cor A Sec 14



I hereby certify that this SURVEY and PLAT was made by me or under my direct personal supervision and that I am a duly registered Land Surveyor under the laws of the State of Iowa.

..... 197
Iowa Reg. No.



PROFESSIONAL ENGINEERS

LAND SURVEYORS

West Union

Independence

Project No.

Book No.

Page