

Section 14-95-12
As referred to in
Engr. Tie Book

Chickasaw Co Recorder Cindy Messersmith
 FEE BOOK 2006-0801 4/14/2006 @ 09:37AM
 SEC SEC COR CERT Book Page #: 1
 Total Fees: \$7.00

TeKIPPE ENGINEERING, P.C., 128 South Vine Street, West Union, Iowa 52175 Phone (563) 422-5131

UNITED STATES PUBLIC LAND SURVEY CORNER CERTIFICATE

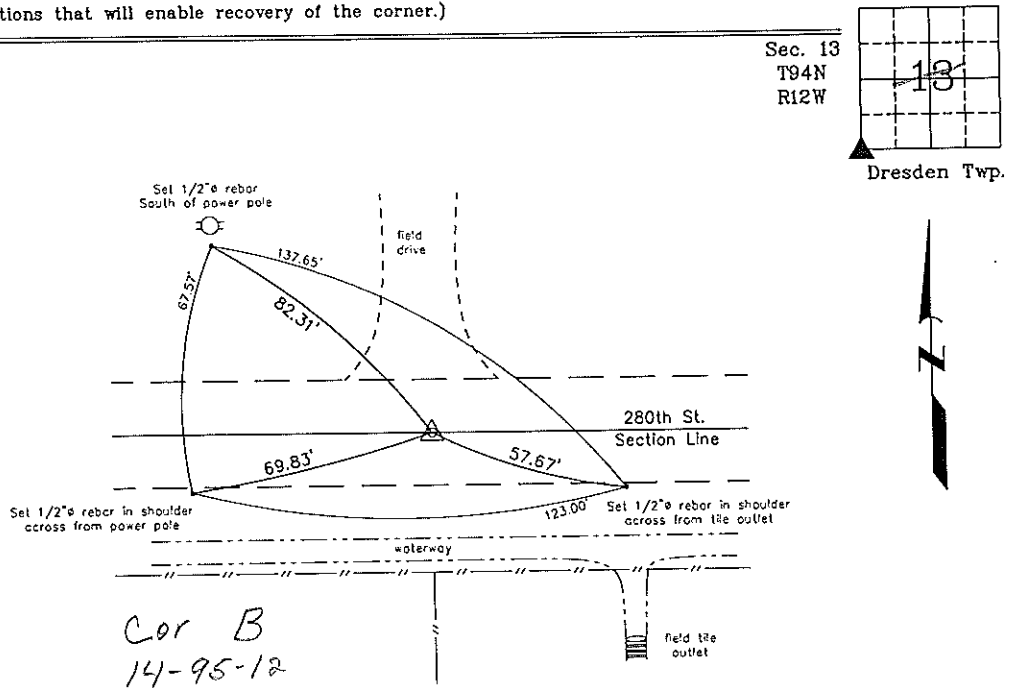
OF 14 95
 Land Survey Monuments situated in Section 13, Township 94 North, Range 12 West of the Fifth Principal Meridian, CHICKASAW County, Iowa.
 Previously recorded in none in County Recorder's Office.
(book, page, document number, etc.)

(Show reason for preparing this certificate, the evidence and detailed procedures used in establishing the corner positions and monumentation found or placed.)

Monument Description and Remarks: SW CORNER SECTION 13 T94N R12W: Found 1"Ø iron pin, 14" long and 1.5' deep, with information obtained from the Chickasaw County Engineer's Office in Field Book Dresden Twp. Corner Ties, Section 14, Corner 'B'. Reset pin at 4" deep.

PLAN - VIEW

(Show a minimum of three reference ties to durable physical objects, relevant monuments and physical conditions that will enable recovery of the corner.)



Cor B
14-95-12

SW Corner Section 13 T94N R12W
 Found 1"Ø iron pin, 14" long and 1.5' deep. Reset pin at 4" deep.



I hereby certify that this land surveying document was prepared and the related survey work was performed by me or under my direct personal supervision and that I am a duly licensed Land Surveyor under the laws of the State of Iowa.
Michael J. Shimak April 12, 2006
 Michael J. Shimak Date
 License number 16961
 My license renewal date is December 31, 2007.
 Sheets covered by this seal Individual

List Corners to be Indexed			
Corners	Section	Twp.	Range
SW	13	94N	12W

Project Number 06103.1S
 FB F'burg #1 PG. 17-19
 X:\Section Corners\Sec. 13\13-94-12u.dwg