

Section 13-94-12  
 As referred to in  
 Eng. Tr. Book

DOCUMENT No. 00980 FILED FOR RECORD THE 4th DAY OF STATE OF IOWA, CHICKASAW COUNTY,  
 RECORDING FEE \$ 6.00 November 19, 1996 AT 8:58  
 TRANSFER FEE \$ By Leitha H. Ross, Recorder  
 LEITHA H. ROSS Deputy

Prepared by: Erdman Engineering P.C. 708 Commerce Drive, P.O. Box 246, Decorah Iowa, 52101  
 Phone (319)382-4194, Fax (319)382-3623

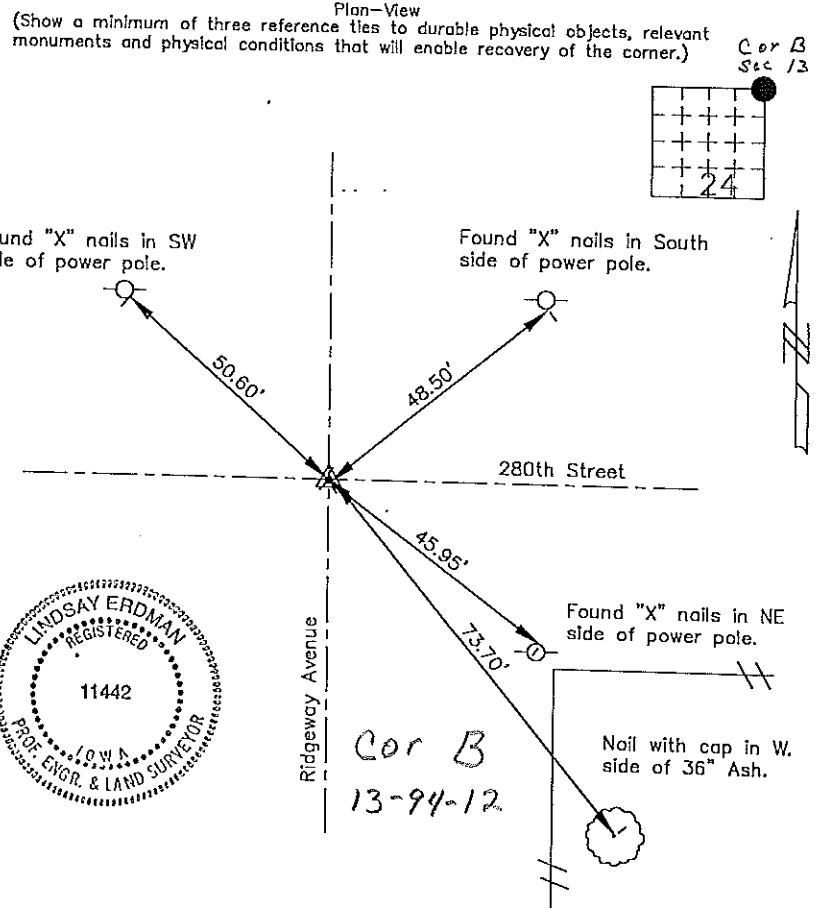
United States Public Land Survey Corner Certificate

13 of

Land Survey Monuments situated in Section 24 Township 94 Range 12 of the Fifth Principle Meridian, Chickasaw County, Iowa. Previously recorded in does not apply in County Recorders Office.

(Show reason for preparing this certificate, the evidence and detailed procedures used in establishing the corner positions and monumentation found or placed.)

Monument Description and Remarks: This certificate is prepared in accordance with Section 355.11 of the 1995 Code of Iowa. No previous certificate has been filed for this corner location. Based on County Engineer's Reference Ties we found three sets of "X" nails used as tie markers. From these ties we found a 1" bar down ±6" below the crushed rock surface and near the intersection of Ridgeway Avenue and 280th Street at the NE Corner of Sec. 24-94-12.



I hereby certify that the survey work was completed and this certificate was prepared by me or under my direct supervision and that I am a duly registered land surveyor under the laws of the State of Iowa.

Signature: *Lindsay Erdman*  
 Lindsay Erdman, P.E. and L.S.  
 Date: 10/5/96 Reg. No. 11442

My license will be renewed January 1, 1997

Corner	Section	Twp.	Range
NE	24	94	12

BOOK PAGE 282