

UNITED STATES PUBLIC LAND SURVEY CORNER CERTIFICATE

OF

Land Survey Monuments situated in Section 24, Township 94 North, Range 12 West, of the Fifth Principal Meridian, CHICKASAW County, Iowa.

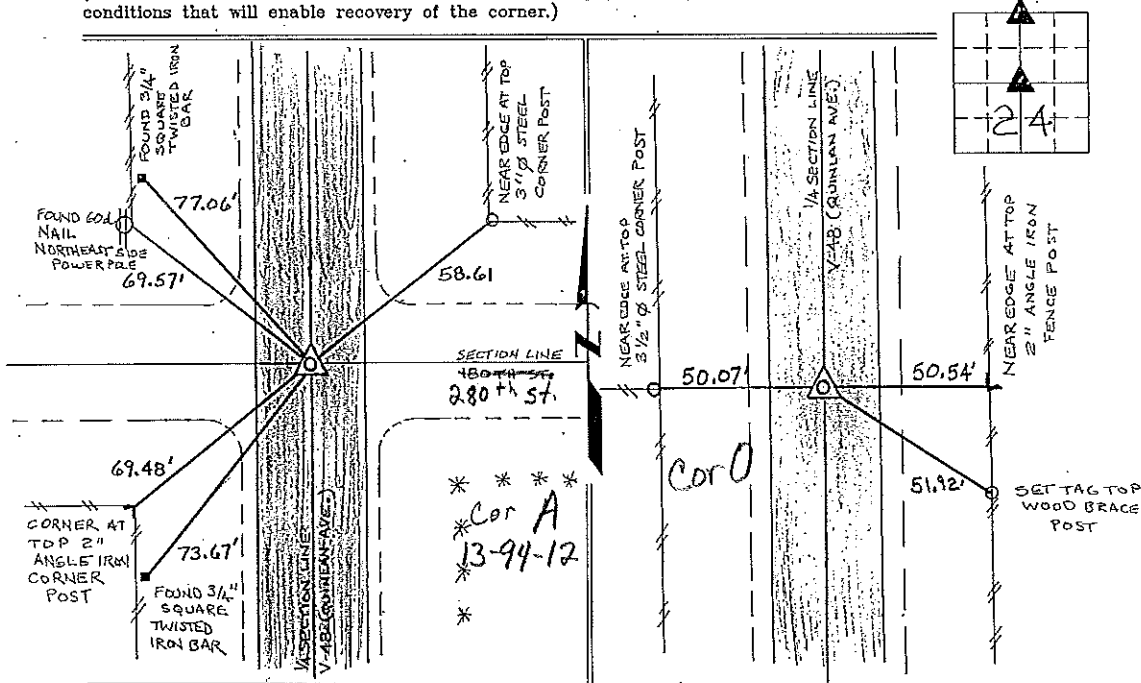
Previously recorded in NONE in County Recorder's Office.
(book page, document number, etc.)

(Show reason for preparing this certificate, the evidence and detailed procedures used in establishing the corner positions and monumentation found or placed.)

Monument Description and Remarks: N 1/4 CORNER SECTION 24 T 94 N R 12 W: FOUND PK NAIL SHOWN AS SET FROM COUNTY ENGINEERS TIES, ON A SURVEY AND PLAT MADE BY PAUL H. HELLAND, RECORDED SEPTEMBER 13, 1995, BOOK 158, PAGE 464, ON FILE IN THE CHICKASAW COUNTY RECORDERS OFFICE.
CENTER OF SECTION 24 T 94 N R 12 W: FOUND PK NAIL 0.1 DEEP (UNDER SEAL COAT) FROM TIES OBTAINED FROM THE COUNTY ENGINEERS FIELD BOOK "DRESDEN TWP. CORNER TIES".

PLAN - VIEW

(Show a minimum of three reference ties to durable physical objects, relevant monuments and physical conditions that will enable recovery of the corner.)



I hereby certify that the survey work was completed and this certificate was prepared by me or under my direct personal supervision and that I am a duly registered land surveyor under the laws of the state of Iowa.

Signature: Lyle G. TeKippe
Lyle G. TeKippe
Date: 6-28-96 Reg. No. 7060
My Registration Renewal Date is December 31, 1998

Seal



List Corners to be Indexed			
Corners	Section	Twp.	Range
N 1/4	24	94N	12W
Center	A	13-94-12	
CENTER	24	94N	12W
Cor O	24-94-12		

*Placed in Tie Book
7/8/96
JFM*