

DOCUMENT No. **1393** FILED FOR RECORD THE **9th** DAY OF **August** 2000 AT **3:50** P.M. BOOK **2000** PAGE **1393** STATE OF IOWA, CHICKASAW COUNTY.  
 RECORDING FEE \$ **6.00** By **Cindy Messersmith** Recorder  
 TRANSFER FEE - \$ \_\_\_\_\_ Deputy **Shirley M. Fugere**

**STEVE BUSSE P.O. BOX 241 508 ELM STREET ALLISON, IOWA 50602 319-267-2519**

**UNITED STATES PUBLIC LAND SURVEY CORNER CERTIFICATE**

Land Survey Monuments situated in Section 27, Township 94 North, Range Range 12 west, of the Fifth Principal Meridian, Chickasaw County, Iowa.

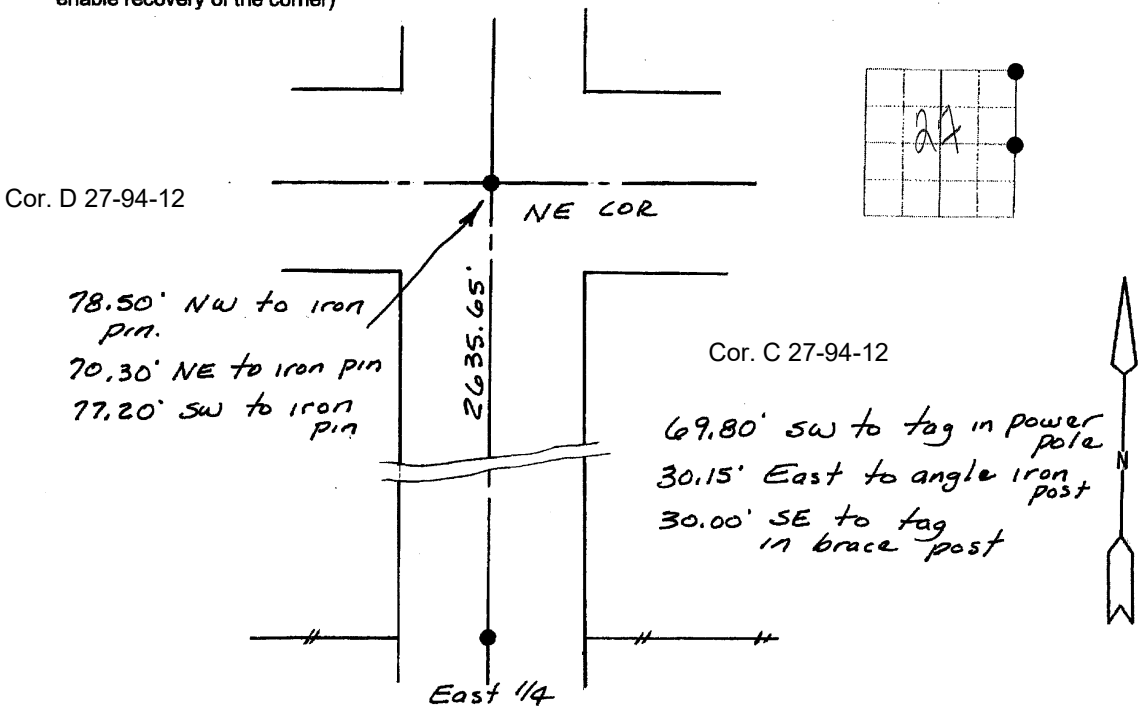
Previously recorded in N/A in County Recorder's Office.  
 (book, page, document number, etc.)

(Show reason for preparing this certificate, the evidence and detailed procedures used in establishing the corner positions and monumentation found or placed.)

Monument Description and Remarks: Set 1/2" rebar at County ties and nail found in center of intersection. Set 1/2" rebar at East 1/4 corner. Set at 31.5' east of fence on west side road. Pin set at split of ROW fences and on fence line to west. Is an old fence post east and 2' south of newer fence to East.

**PLAN - VIEW**

(Show a minimum of three reference ties to durable physical objects, relevant monuments and physical conditions that will enable recovery of the corner)



I hereby certify that the survey work was completed and this land surveying document was prepared by me or under my direct personal supervision and that I am a duly licensed land surveyor under the laws of the state of Iowa

Corners	List Corners to be Indexed		
	Section	Twp	Range
NE COR.	27	94	12
E 1/4	27	94	12

Signature: Steve Busse  
 Name typed or printed: **STEVE BUSSE**  
 Date: 6/19/2000 Reg. No. 9018  
 My license renewal date is December 31, 2000  
 SEAL