

DOCUMENT No. 1393 FILED FOR RECORD THE 9th DAY OF August 2000 AT 3:50 P. O'CLOCK P M. BOOK 2000 PAGE 1393 STATE OF IOWA, CHICKASAW COUNTY: Cindy Messersmith Recorder Shirley McFarlane Deputy

STEVE BUSSE P.O. BOX 241 508 ELM STREET ALLISON, IOWA 50602 319-267-2519

**UNITED STATES PUBLIC LAND SURVEY CORNER CERTIFICATE**

Land Survey Monuments situated in Section 27, Township 94 North, Range 12 west, of the Fifth Principal Meridian, Chickasaw County, Iowa.

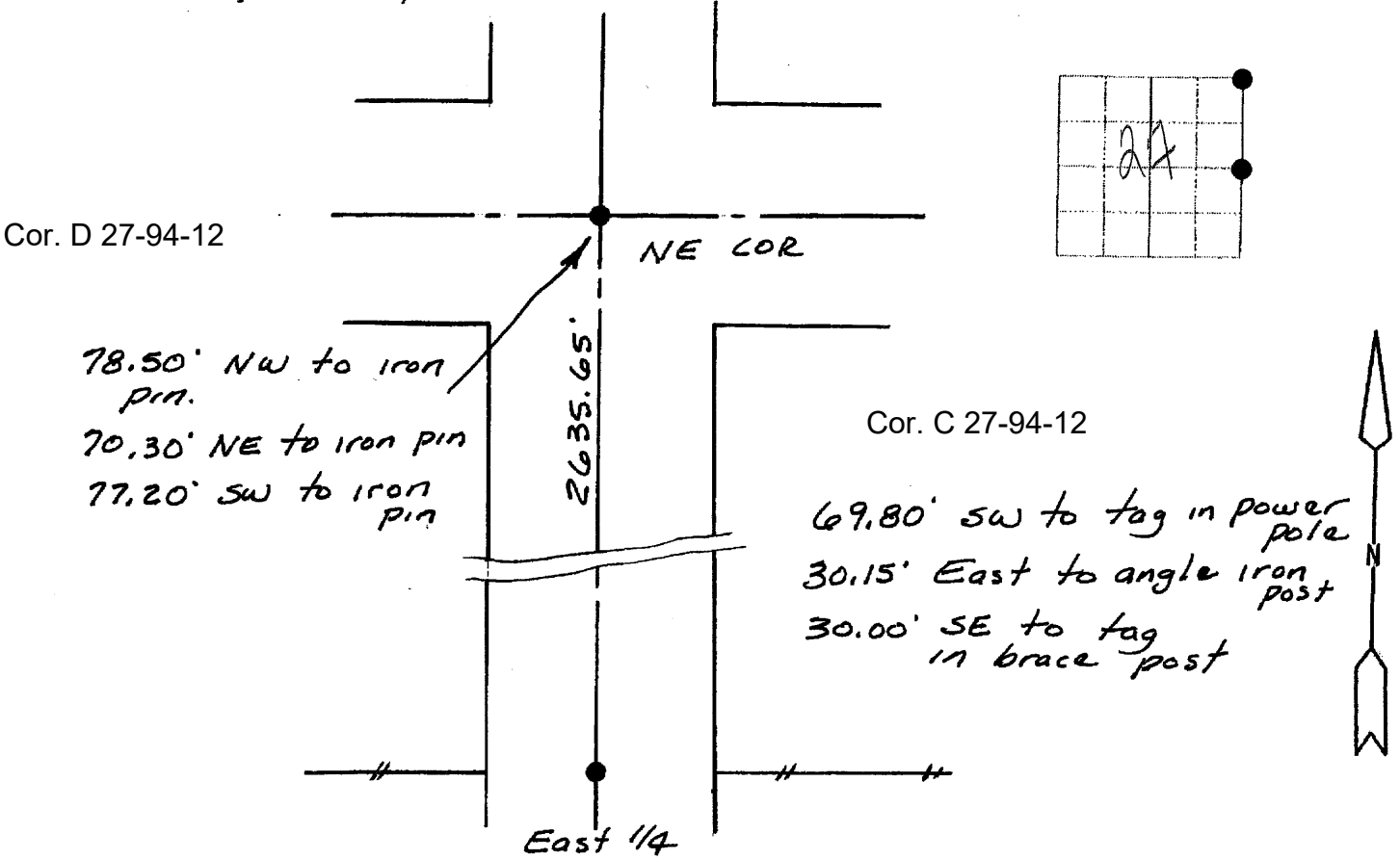
Previously recorded in N/A in County Recorder's Office.  
(book, page, document number, etc.)

(Show reason for preparing this certificate, the evidence and detailed procedures used in establishing the corner positions and monumentation found or placed.)

Monument Description and Remarks: Set 1/2" rebar at County ties and nail found in center of intersection. Set 1/2" rebar at East 1/4 corner. Set at 31.5' east of fence on west side road. Pin set at split of Row fences and on fence line to west. Is an old fence post east and 2' south of newer fence to East.

**PLAN - VIEW**

(Show a minimum of three reference ties to durable physical objects, relevant monuments and physical conditions that will enable recovery of the corner)



I hereby certify that the survey work was completed and this land surveying document was prepared by me or under my direct personal supervision and that I am a duly licensed land surveyor under the laws of the state of Iowa

Signature: Steve Busse  
Name typed or printed: STEVE BUSSE  
Date: 6/17/2000 Reg. No. 9018  
My license renewal date is December 31, 2000

SEAL

| Corners | List Corners to be Indexed |     |       |
|---------|----------------------------|-----|-------|
|         | Section                    | Twp | Range |
| NE COR. | 27                         | 94  | 12    |
| E 1/4   | 27                         | 94  | 12    |