

Prepared by & Return to: Harold - Recks Surveying, 13 East Main Street, New Hampton, IA 50659, Ph. 641-394-2725

**UNITED STATES PUBLIC LAND SURVEY CORNER CERTIFICATE**

Land Survey Monuments situated in Section 28, Township 94 North, Range 12 West of the Fifth Principal Meridian, Chickasaw County, Iowa. 1., 2.) Not Previously recorded in the County Recorder's Office.

This certificate is being prepared in compliance with Iowa Code Chapter 355.11 because:

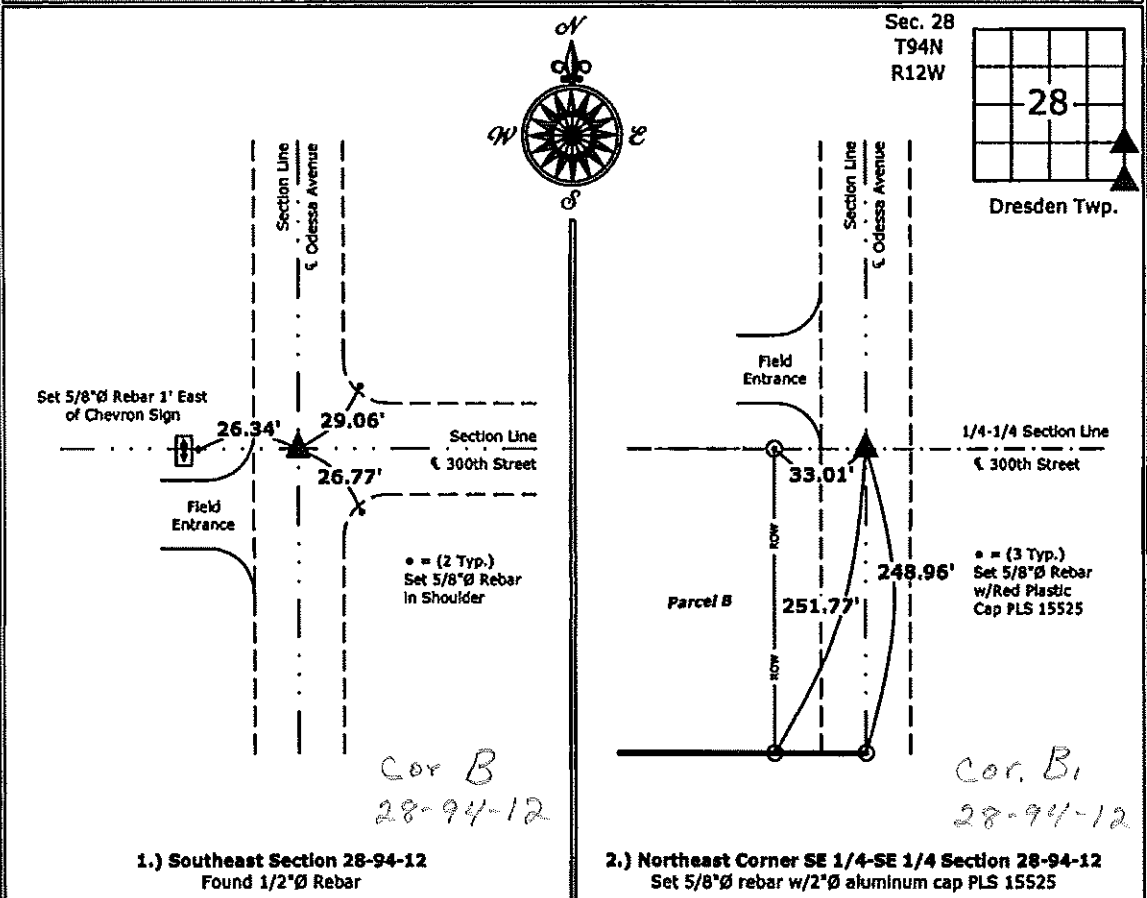
- 1 & 2  There is no certificate on file for this corner.  
 There are no longer three valid ties of record.  
 There are changes to reference ties of record.  
 There is change of monumentation of record.  
 To clarify description of record monument (ties).

**Monument Description and Remarks:**

- Southeast Corner:** Found 1/2"Ø Rebar from information obtained from the County Engineer's office in Field Book Dresden Twp. Corner Ties, Section 28, Corner "B".
- Northeast Corner SE 1/4-SE 1/4:** Set 5/8"Ø rebar with 2"Ø aluminum Cap PLS 15525 from information on a survey and plat made by L.P. Erdman, recorded June 9, 1978 in Book 118, Page 21, on file in the Chickasaw County Recorder's office.

**PLAN - VIEW**

(Show a minimum of three reference ties to durable physical objects, relevant monuments and physical conditions that will enable recovery of the corner.)



I hereby certify that this land surveying document was prepared and the related survey work was performed by me or under my direct personal supervision and that I am a duly licensed Land Surveyor under the laws of the State of Iowa.

*Paul R. Herold* 1-2-13  
 Paul R. Herold Date:  
 License number 15525  
 My license renewal date is December 31, 2014.  
 Sheets covered by this seal: Individual sheet only

List Corners to be Indexed			
Corners	Section	Twp.	Range
SE	28	94	12
NE SE SE	28	94	12

Project Number: 2012-217  
 FB: Chickasaw County 5, Pgs. 12-15