

Prepared by & Return to Herold - Recks Surveying, 10 East Main Street, New Hampton, IA 50659, Ph 64-394-2725

UNITED STATES PUBLIC LAND SURVEY CORNER CERTIFICATE

Land Survey Monuments situated in Section ²⁰ 28, Township 94 North, Range 12 West of the Fifth Principal Meridian, Chickasaw County, Iowa. 1.) Previously recorded in Bk. 153, Pg. 53 in the County Recorder's office. 2.) Not Previously recorded in the County Recorder's Office.

This certificate is being prepared in compliance with Iowa Code Chapter 355.11 because:

- 2 There is no certificate on file for this corner.
- 1 There are no longer three valid ties of record.
- 1 There are changes to reference ties of record.
- There is change of monumentation of record.
- To clarify description of record monument (ties).

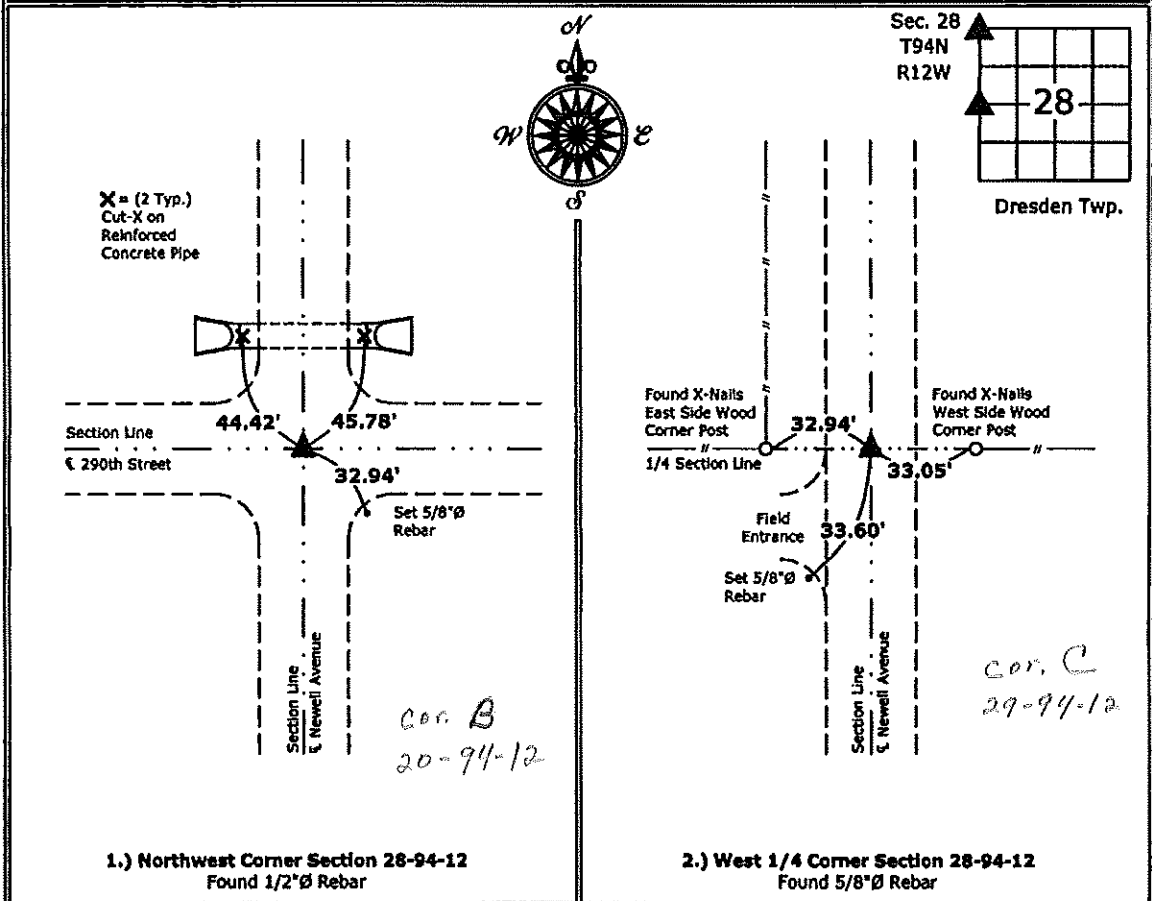
Monument Description and Remarks:

1.) **Northwest Corner:** Found 1/2"Ø Rebar from Information obtained from a previous Section Corner Certificate, set new ties to update the corner.

2.) **West 1/4 Corner:** Found 5/8"Ø Rebar from information obtained from the County Engineer's office in Field Book Dresden Twp. Corner Ties, Section 29, Corner "C".

PLAN - VIEW

(Show a minimum of three reference ties to durable physical objects, relevant monuments and physical conditions that will enable recovery of the corner.)



1.) Northwest Corner Section 28-94-12
Found 1/2"Ø Rebar

2.) West 1/4 Corner Section 28-94-12
Found 5/8"Ø Rebar



I hereby certify that this land surveying document was prepared and the related survey work was performed by me or under my direct personal supervision and that I am a duly licensed Land Surveyor under the laws of the State of Iowa.

Paul R. Herold 1-2-13
Paul R. Herold Date:

License number 15525
My license renewal date is December 31, 2014.
Sheets covered by this seal: Individual sheet only

List Corners to be Indexed			
Corners	Section	Twp.	Range
NW	28	94	12
W 1/4	28	94	12

Project Number: 2012-217
FB: Chickasaw County 5, Pgs. 12-15