

Prepared by & Return to Herold - Recks Surveying, 10 East Main Street, New Hampton, IA 50659, Ph 641-394-2725

UNITED STATES PUBLIC LAND SURVEY CORNER CERTIFICATE

Land Survey Monuments situated in Section ²⁰ 28, Township 94 North, Range 12 West of the Fifth Principal Meridian, Chickasaw County, Iowa. 1.) Previously recorded in Bk. 153, Pg. 53 in the County Recorder's office. 2.) Not Previously recorded in the County Recorder's Office.

This certificate is being prepared in compliance with Iowa Code Chapter 355.11 because:

- 2 There is no certificate on file for this corner.
- 1 There are no longer three valid ties of record.
- 1 There are changes to reference ties of record.
- There is change of monumentation of record.
- To clarify description of record monument (ties).

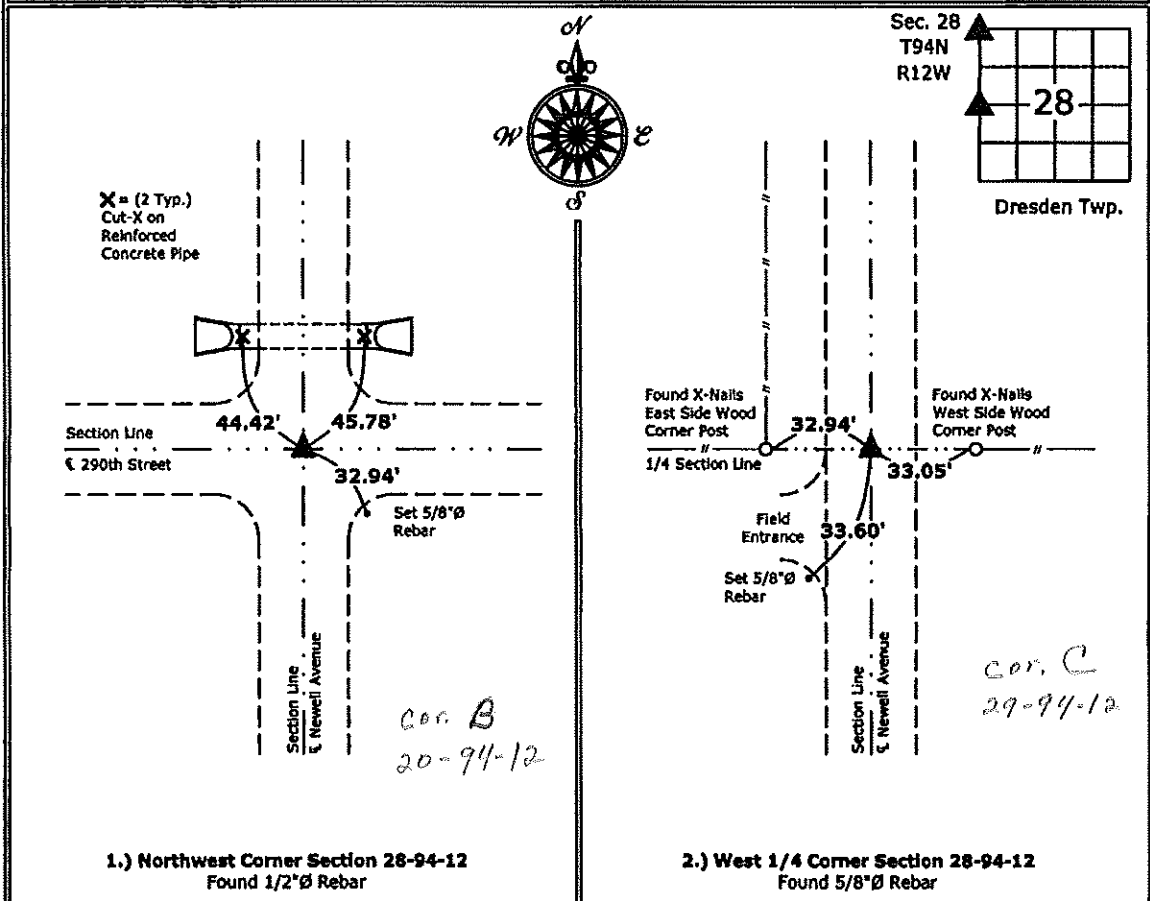
Monument Description and Remarks:

1.) **Northwest Corner:** Found 1/2"Ø Rebar from Information obtained from a previous Section Corner Certificate, set new ties to update the corner.

2.) **West 1/4 Corner:** Found 5/8"Ø Rebar from information obtained from the County Engineer's office in Field Book Dresden Twp. Corner Ties, Section 29, Corner "C".

PLAN - VIEW

(Show a minimum of three reference ties to durable physical objects, relevant monuments and physical conditions that will enable recovery of the corner.)



1.) Northwest Corner Section 28-94-12
Found 1/2"Ø Rebar

2.) West 1/4 Corner Section 28-94-12
Found 5/8"Ø Rebar



I hereby certify that this land surveying document was prepared and the related survey work was performed by me or under my direct personal supervision and that I am a duly licensed Land Surveyor under the laws of the State of Iowa.

Paul R. Herold 1-2-13
Paul R. Herold Date:

License number 15525
My license renewal date is December 31, 2014.
Sheets covered by this seal: Individual sheet only

List Corners to be Indexed			
Corners	Section	Twp.	Range
NW	28	94	12
W 1/4	28	94	12

Project Number: 2012-217
FB: Chickasaw County 5, Pgs. 12-15

Section 20-94-12
 As referred to in
 Engr. Tr. Book

SLSI 9-90

UNITED STATES PUBLIC LAND SURVEY CORNER CERTIFICATE

OF 20

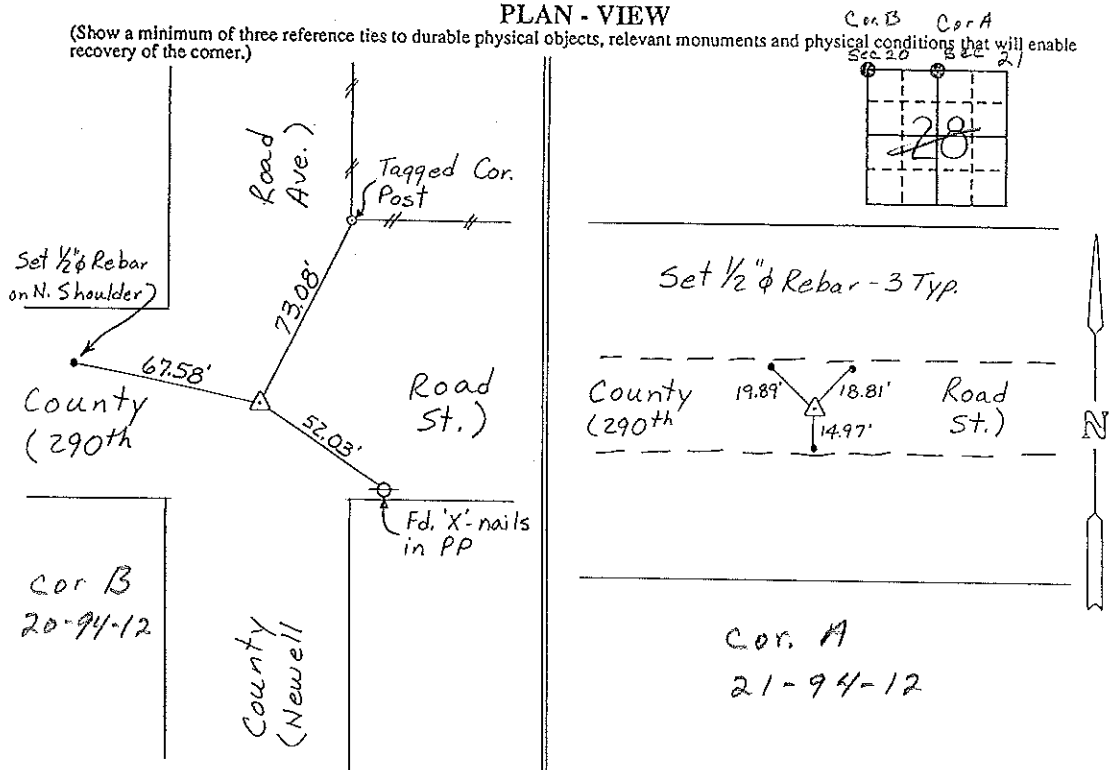
Land Survey Monuments situated in Section 28, Township 94 NORTH, Range 12 WEST, of the Fifth Principal Meridian, CHICKASAW County, Iowa. Previously recorded in NONE in County Recorder's Office. (book, page, document number, etc.)

(Show reason for preparing this certificate, the evidence and detailed procedures used in establishing the corner positions and monumentation found or placed.)

Monument Description and Remarks: NW CORNER, SECTION 28-T94N-R12W:
Found 5/8" Rebar.
N 1/4 CORNER, SECTION 28-T94N-R12W: Set 1/2" Rebar w/cap using County Engineer record distances from NW Cor. & NE Cor. of Section 28 & E of Existing County Road.

PLAN - VIEW

(Show a minimum of three reference ties to durable physical objects, relevant monuments and physical conditions that will enable recovery of the corner.)



NW Cor., Section 28-T94N-R12W

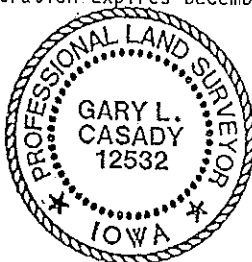
N 1/4 Cor., Section 28-T94N-R12W

I hereby certify that the survey work was completed and this certificate was prepared by me or under my direct personal supervision and that I am a duly registered land surveyor under the laws of the state of Iowa.

Signature: Gary L. Casady
 Name typed or printed: Gary L. Casady
 Date: 8-17-93 Reg. No. 12532
 My Registration Expires December 31, 1994

Corners	Section	Twp	Range
NW Cor. B	28	94N	12W
N 1/4	28	94N	12W
Cor. A	21-94-12		

Placed in the
 book 9/20/91



SEAL