

Instr. Number: 2019-1484
 Recorded: 10/3/2019 at 10:57:25.0 AM
 Pages 1
 County Recording Fee: \$7.00
 Iowa E-Filing Fee: \$3.00
 Combined Fee: \$10.00
 Revenue Tax:
 Shirley Troyna RECORDER
 Chickasaw County, Iowa

Prepared by & Return to: Herold - Reicks Surveying, 10 East Main Street, New Hampton, IA 50659, Ph. 641-394-2725

United States Public Land Survey Corner Certificate

Land Survey Monument situated in
 Section 2, Township 94 North, Range 12 West of the Fifth Principal Meridian, Chickasaw County, Iowa.
 On file in Book 155, Page 373 in the County Recorder's office.

This certificate is being prepared in compliance with Iowa Code Chapter 355.11 because:

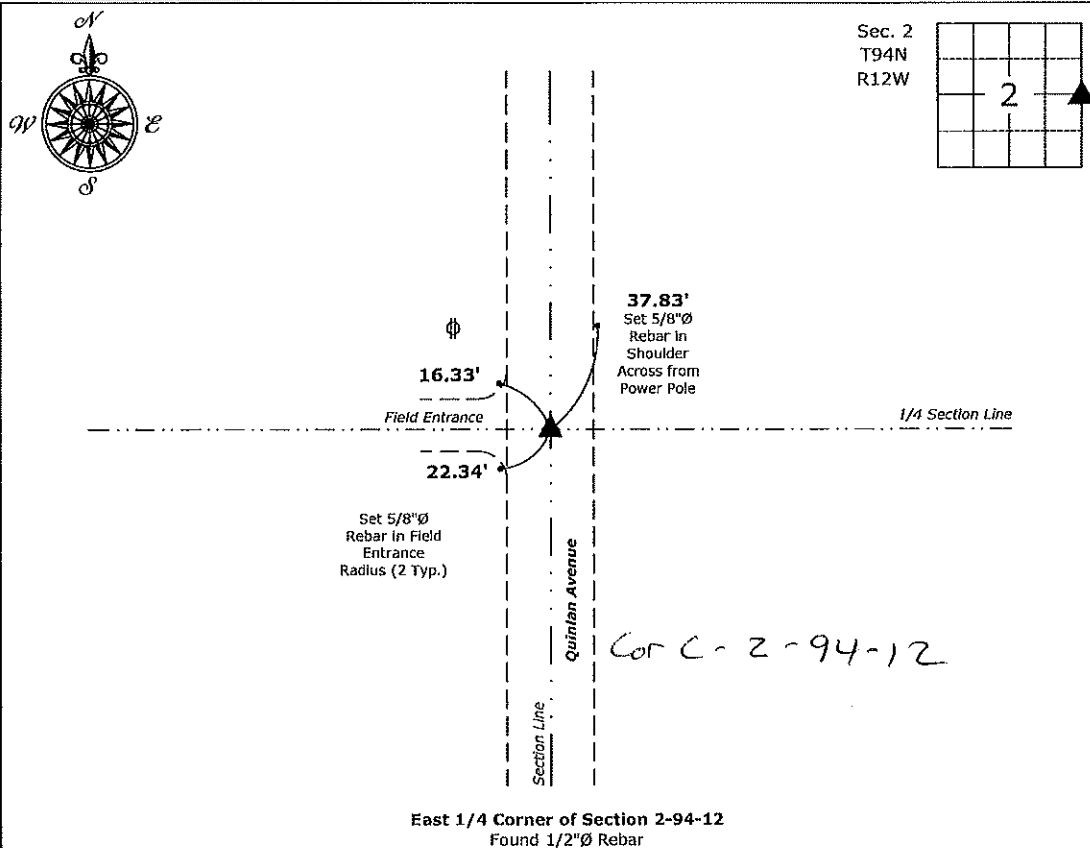
- There is no certificate on file for this corner.
- There are no longer three valid ties of record.
- There are changes to reference ties of record.
- There is change of monumentation of record.
- To clarify description of record monument (ties).

Monument Description and Remarks:

East 1/4 Corner: Found 1/2"Ø Rebar with information obtained from the previously recorded Section Corner Certificate.

Plan View

(Show a minimum of three reference ties to durable physical objects, relevant monuments and physical conditions that will enable recovery of the corner.)



I hereby certify that this land surveying document was prepared and the related survey work was performed by me or under my direct personal supervision and that I am a duly licensed Land Surveyor under the laws of the State of Iowa.
Kirk D. Reicks 10-3-19
 Kirk D. Reicks Date:
 License number 19211
 My license renewal date is December 31, 2020.
 Sheets covered by this seal: Individual sheet only

List Corner to be Indexed			
Corner	Section	Twp.	Range
E 1/4	2	94	12
Project Number: 2019-102			
FB: Chickasaw 9, Pgs. 61-62			

File: S:\Projects - NHO\County Control Systems - NHO\CHICKASAW\CHICK-43 (F-Burg)\CHICK-43.dwg, 10/3/2019 10:32:38 AM

JOHN R. CRAWFORD, P.E. & L.S.

CRAWFORD ENGINEERING & SURVEYING, INC. INDEPENDENCE, IOWA (319) 334-707

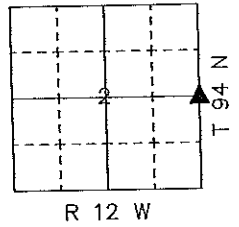
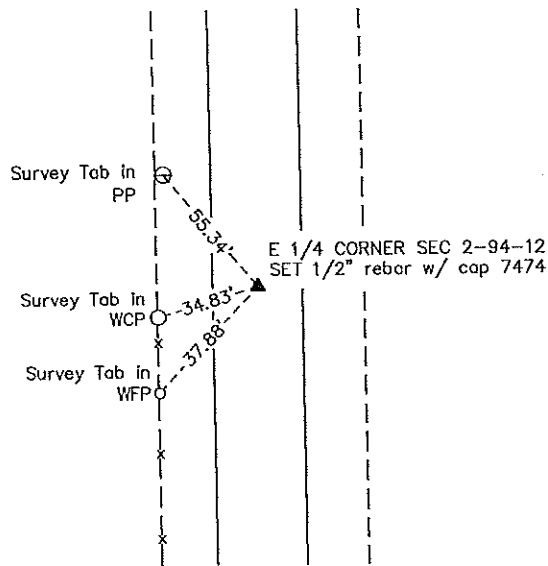
UNITED STATES PUBLIC LAND SURVEY CORNER CERTIFICATE OF
Land Survey Monuments situated in Section 2, Township 94 N, Range
12 W, of the Fifth Principal Meridian, CHICKASAW County, Iowa.

Previously recorded in NO CURRENT RECORD OF CERTIFICATE in County Recorder's Office.

Monument Description and Remarks:

E 1/4 CORNER, SECTION 2 T94N R12W - Found 1/2" rebar w/ cap 12352 set 2665.0' from Southeast corner. Took recent measurement for mile and proportioned according to government measure. Set 1/2" rebar w/ cap 7474 for E 1/4 corner section 2, 14.76 feet south of 1/2" rebar w/ cap 12352.

PLAN - VIEW



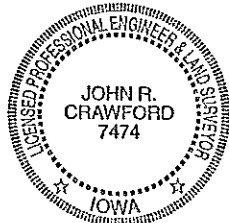
I hereby certify that the survey work was completed and this land surveying document was prepared by me or under my direct personal supervision and that I am a duly registered land surveyor under the laws of the state of Iowa.

Signature: John R. Crawford
JOHN R. CRAWFORD, P.E. & L.S.

Date: 12-30-99 Reg. No. 7474

My registration renewal date is December 31, 2001

SEAL



List Corners to be Indexed

Corners	Section	Twp	Range
E 1/4 COR	2	94	12

UNITED STATES PUBLIC LAND SURVEY CORNER CERTIFICATE

OF

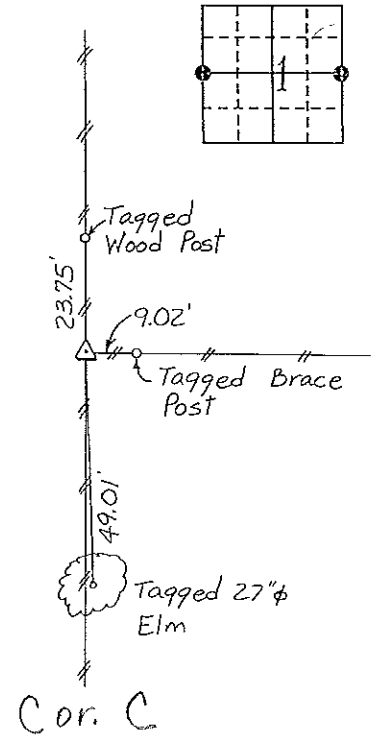
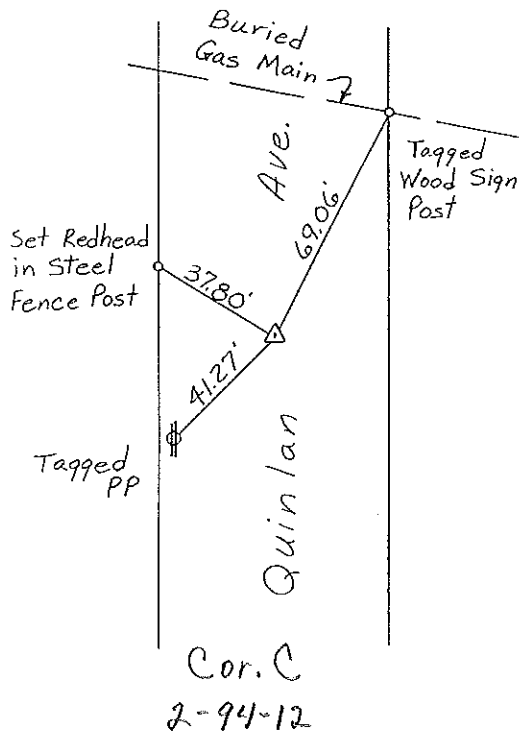
Land Survey Monuments situated in Section 1, Township 94 NORTH, Range 12 WEST, of the Fifth Principal Meridian, CHICKASAW County, Iowa. Previously recorded in NONE in County Recorder's Office

(book, page, document number, etc.)
 (Show reason for preparing this certificate, the evidence and detailed procedures used in establishing the corner positions and monumentation found or placed.)

Monument Description and Remarks: W 1/4 CORNER, SECTION 1-T94N-R12W.
Set 1/2" Rebar w/cap record distance from SW Corner of
Section & on E County Road.
E 1/4 CORNER, SECTION 1-T94N-R12W: Set 1/2" Rebar w/cap
@ Existing Fence Corner.

PLAN - VIEW

(Show a minimum of three reference ties to durable physical objects, relevant monuments and physical conditions that will enable recovery of the corner.)



W 1/4 CORNER, SECTION 1-T94N-R12W

E 1/4 CORNER, SECTION 1-T94N-R12W

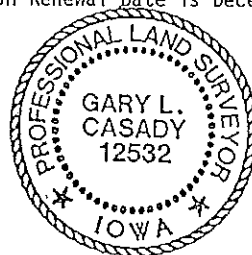
I hereby certify that the survey work was completed and this certificate was prepared by me or under my direct personal supervision and that I am a duly registered land surveyor under the laws of the state of Iowa.

Signature: Gary L. Casady
 Name typed or printed: Gary L. Casady

Date: 7-21-94 Reg. No. 12532

My Registration Renewal Date is December 31, 1994

Corners	Section	Twp	Range
W 1/4	1	94N	12
E 1/4	1	94N	12



SEAL

Placed in tie book
 8/19/94
 IFM