

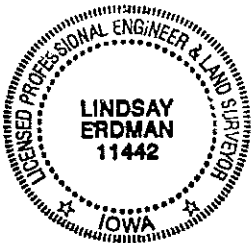
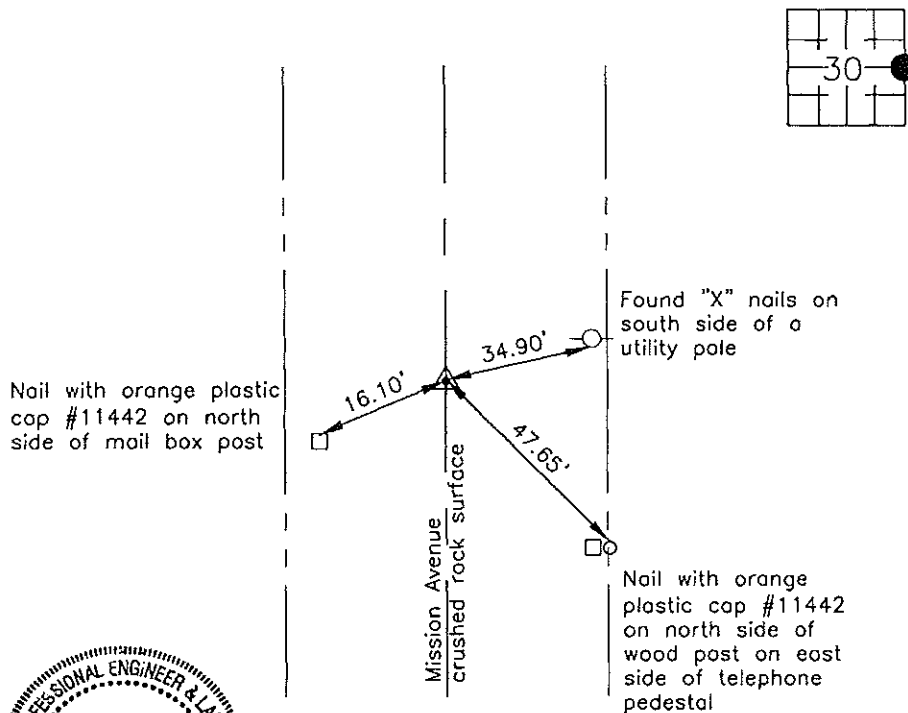
Prepared by: Erdman Engineering, P.C., 708 Commerce Drive, P.O. Box 246, Decorah, Iowa 52101 (563) 382-4194

United States Public Land Survey Corner Certificate  
 of

Land Survey Monuments situated in Section 30, Township 94, Range 12 West of  
 the 5th Principal Meridian in Chickasaw County, Iowa. Previously recorded in  
does not apply in the county Recorder's Office.

Monument Description and Remarks: This certificate is prepared in accordance with  
 Section 193C of the Code of Iowa. No previous certificate has been filed for this  
 corner location. We found no record of the E ¼ Corner being set. We found a ½"  
 diameter steel bar at the approximate centerline of the county road that is in line with  
 the occupation lines of the land to the east and the west. We used the steel bar as  
 the E ¼ Corner of Section 30, Township 94 North, Range 12 West.

Plan-View



Cor. C

I hereby certify that this land surveying document  
 was prepared and the related survey work was  
 performed by me or under my direct personal  
 supervision and that I am a duly licensed Land  
 Surveyor under the laws of the State of Iowa.

Signature: Lindsay Erdman  
 Lindsay Erdman, P.E. and P.L.S. Iowa License Number 11442

Date: 8/1/08

My license renewal date is December 31, 2008

Corner(s) to be Indexed

Corner	Section	Township	Range
E 1/4	30	94	12