

Section 24-94-12
 As referred to in
 Engr. Tie Book

FILED 2003 - 0558
 RECORDER'S OFFICE
 CHICKASAW COUNTY, IOWA
see also
 2003 FEB 25 AM 8 37

CINDY MESSERSMITH
 COUNTY RECORDER

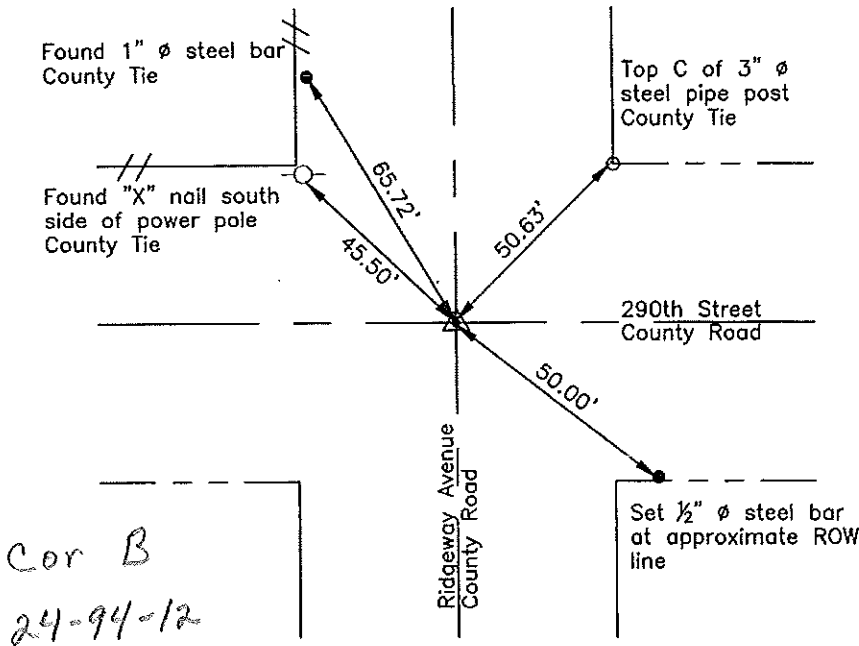
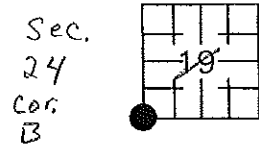
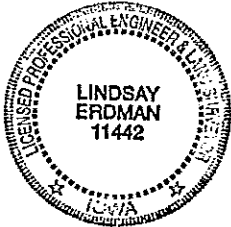
Prepared by: Erdman Engineering, P.C. 708 Commerce Drive, P.O. Box 246 Decorah, Iowa 52101, (563)382-4194

United States Public Land Survey Corner Certificate
 of 24¹²

Land Survey Monuments situated in Section 19, Township 94, Range 11 West of the 5th Principal Meridian in Chickasaw County, Iowa. Previously recorded in does not apply in the county Recorder's Office.

Monument Description and Remarks: This certificate is prepared in accordance with Section 193C of the Code of Iowa. No previous certificate has been filed for this corner location. Based on Chickasaw County Engineer's Reference Ties we found a set of "X" nails, a 3" diameter steel pipe post, and a 1" diameter steel bar which had been used previously as tie markers. From these ties we found a 1/2" diameter steel bar at the approximate centerline-centerline intersection of the county roads that matches the description of the monument set previously as Corner B of Section 24 of Dresden Township. We used this monument as the SW Corner of Section 19, Township 94 North, Range 11 West. The top of the monument is down ±6" below the crushed rock surface of the county road.

Plan-View



I hereby certify that the survey work was completed and this certificate was prepared by me or under my direct supervision and that I am a duly registered land surveyor under the laws of the State of Iowa.

Signature: *Lindsay Erdman*
 Lindsay Erdman, P.E. and L.S.
 Date: 2/24/03 Reg. No. 11442

My license renewal date is December 31, 2004

Corner(s) to be Indexed

Corner	Section	Township	Range
SW	19	94	11