

Prepared by & Return to Herold - Reicks Surveying, 10 East Main Street, New Hampton, IA 50658, Ph. 641-294-2725

UNITED STATES PUBLIC LAND SURVEY CORNER CERTIFICATE

Land Survey Monuments situated in Section ¹⁹30, Township 94 North, Range 12 West of the Fifth Principal Meridian, Chickasaw County, Iowa. 1.) Not previously recorded in the County Recorder's office. 2.) Previously recorded in Doc. #2008-1519 in the County Recorder's office.

This certificate is being prepared in compliance with Iowa Code Chapter 355.11 because:

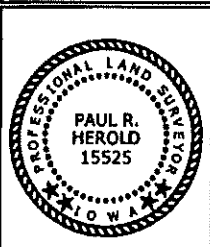
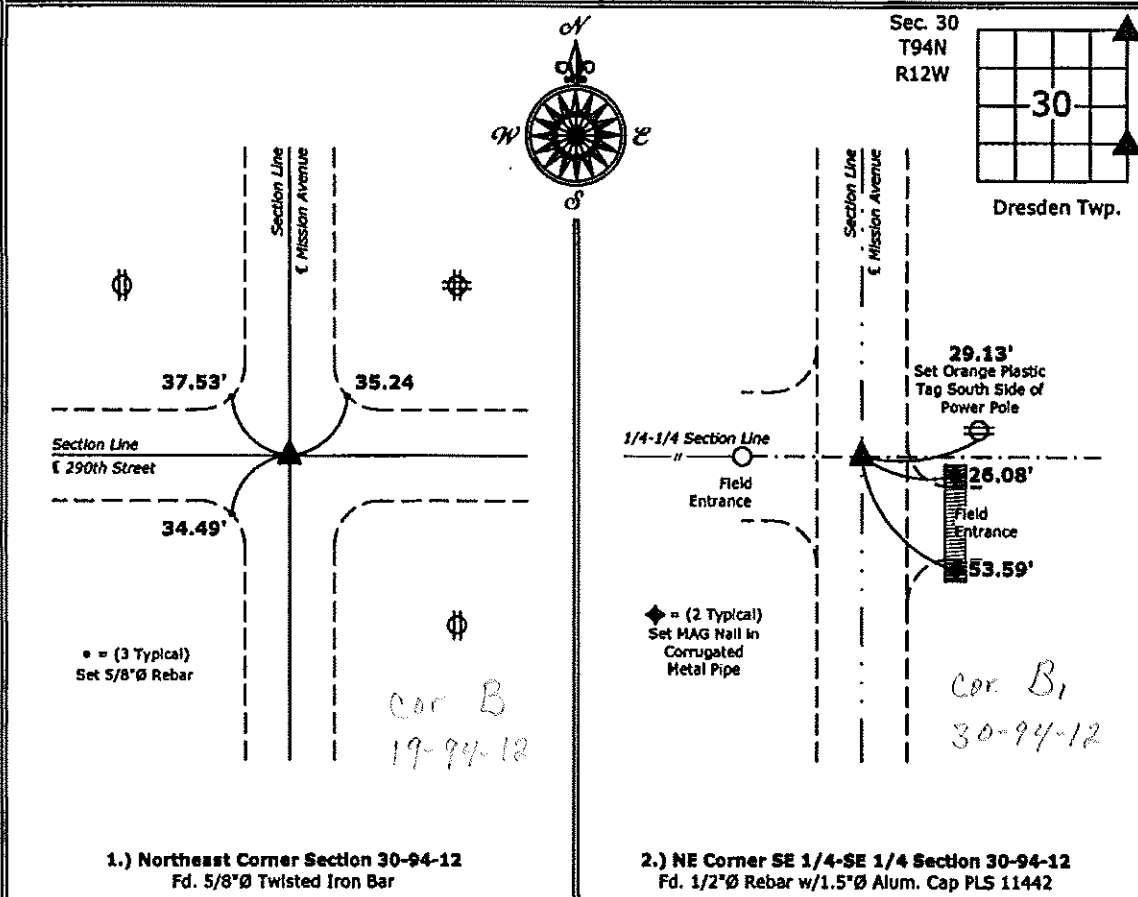
- 1 There is no certificate on file for this corner.
- There are no longer three valid ties of record.
- 2 There are changes to reference ties of record.
- There is change of monumentation of record.
- To clarify description of record monument (ties).

Monument Description and Remarks:

- 1.) **Northeast Corner:** Fd. 5/8"Ø Twisted Iron Bar from Information obtained from the County Engineer's office.
- 2.) **NE Corner SE 1/4-SE 1/4:** Fd. 1/2"Ø Rebar w/1.5"Ø Alum. Cap PLS 11442 from Information obtained from previous Section Corner Certificate; no valid ties remained, set new ties to update corner.

PLAN - VIEW

(Show a minimum of three reference ties to durable physical objects, relevant monuments and physical conditions that will enable recovery of the corner.)



I hereby certify that this land surveying document was prepared and the related survey work was performed by me or under my direct personal supervision and that I am a duly licensed Land Surveyor under the laws of the State of Iowa.

Paul R. Herold 7-11-13
 Paul R. Herold Date:
 License number 15525
 My license renewal date is December 31, 2014.
 Sheets covered by this seal: Individual sheet only

List Corners to be Indexed			
Corners	Section	Twp.	Range
NE	30	94	12
NE-SE-SE	30	94	12

Project Number: 2013-075
 FB: Chickasaw County 5, Pgs. 50-51

File: S:_CSD Projects\2013-075\2013-075.dwg, 6/20/2013 3:30:10 PM

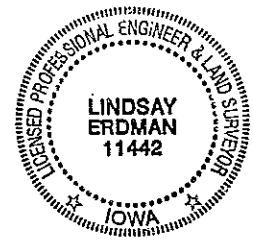
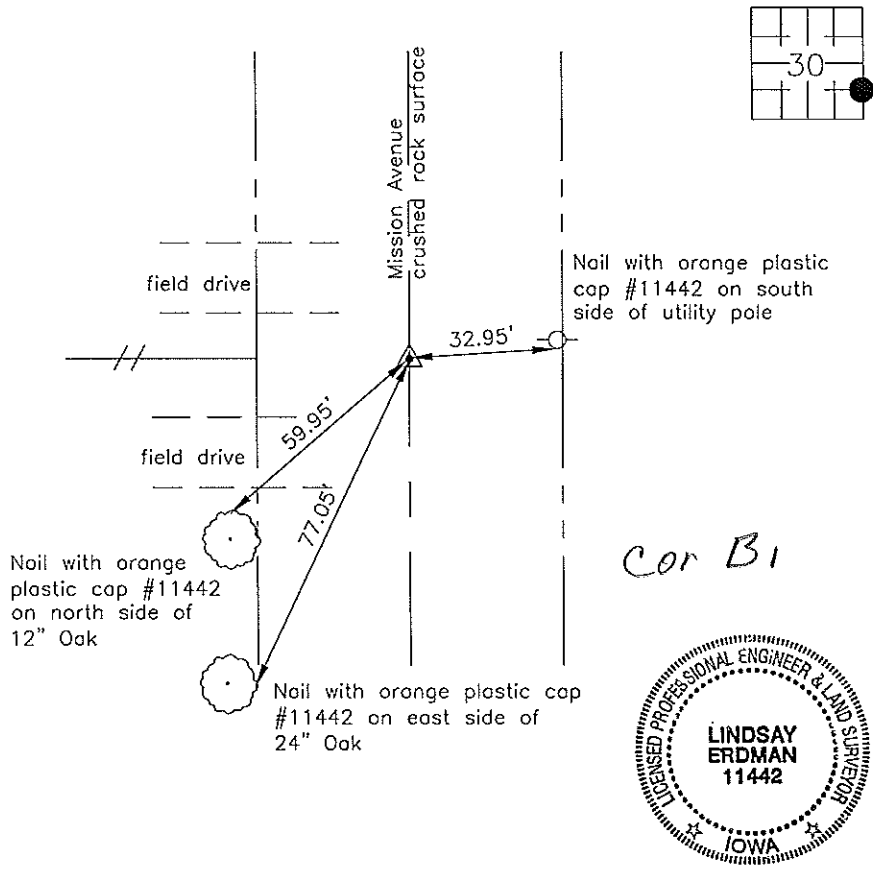
Prepared by: Erdman Engineering, P.C., 708 Commerce Drive, P.O. Box 246, Decorah, Iowa 52101 (563) 382-4194

United States Public Land Survey Corner Certificate
 of

Land Survey Monuments situated in Section 30, Township 94, Range 12 West of the 5th Principal Meridian in Chickasaw County, Iowa. Previously recorded in does not apply in the county Recorder's Office.

Monument Description and Remarks: This certificate is prepared in accordance with Section 193C of the Code of Iowa. No previous certificate has been filed for this corner location. We found no record of the ESE 1/8 Corner being set. We found no evidence of a monument in the field other than the county road and an existing fence line running west. We found the SE Corner and the E 1/4 Corner. We set a 1/2" diameter steel bar with 1 1/2" aluminum cap #11442 on line and equidistant between the SE Corner and the E 1/4 Corner as the ESE 1/8 Corner of Section 30, Township 94 North, Range 12 West.

Plan-View



I hereby certify that this land surveying document was prepared and the related survey work was performed by me or under my direct personal supervision and that I am a duly licensed Land Surveyor under the laws of the State of Iowa.

Signature: Lindsay Erdman
 Lindsay Erdman, P.E. and P.L.S. Iowa License Number 11442

Date: 8/1/08

My license renewal date is December 31, 2008

Corner(s) to be Indexed

Corner	Section	Township	Range
ESE 1/8	30	94	12