

04244

DOCUMENT No. _____ FILED FOR RECORD THE 21st DAY OF _____ STATE OF IOWA, CHICKASAW COUNTY:
 RECORDING FEE \$ 6.00 December 19 99 AT 9:22 By: Cindy M. Murren Recorder
 TRANSFER FEE - \$ _____ O'CLOCK A M. BOOK 174 PAGE 217 By: Whitney M. Payne Deputy

J. Clifton Froman, LS, 711 Park Avenue, Ackley, IA 50601 Ph 515-847-3273

UNITED STATES PUBLIC LAND SURVEY CORNER CERTIFICATE OF

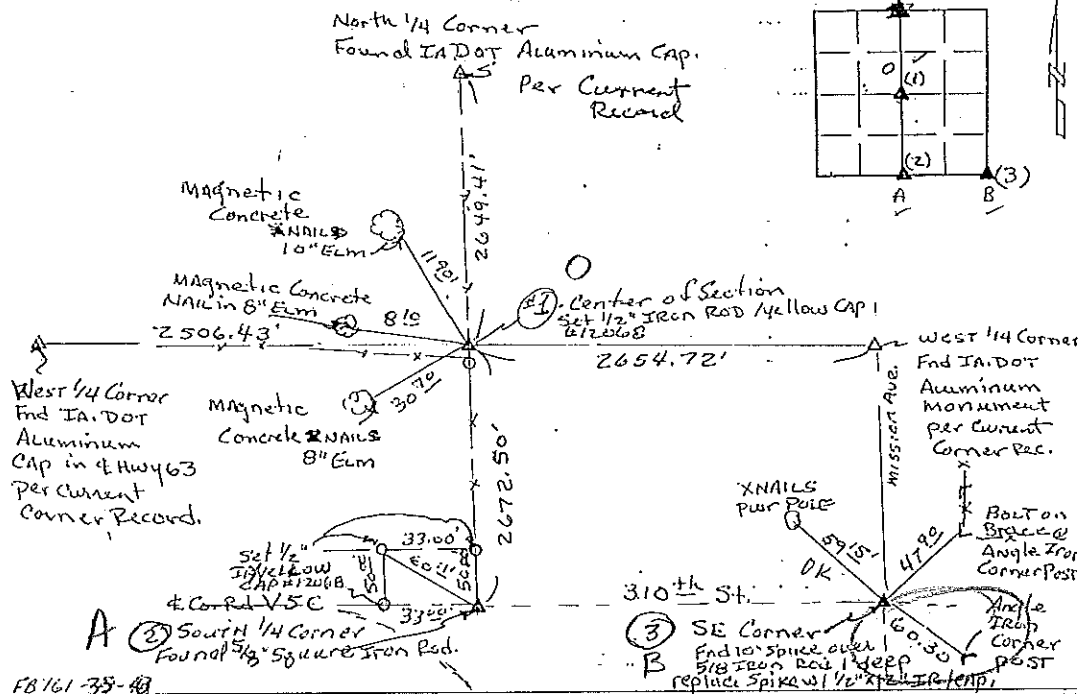
Land Survey Monuments situated in Section 31, Township 94 North, Range 12 West, of the Fifth Principal Meridian, Chickasaw County, Iowa, Previously recorded in N/A in County Recorder's Office

(Show reason for preparing this certificate, the evidence and detailed procedures used in establishing the corner positions and monumentation found or placed.)

Monument Description and Remarks: No Current corner certificates are on file for these corners. (1) Center of Section - Set 1/2" Iron Rod w/ yellow CAP at intersection of lines from EAST & WEST, North & South 1/4 Corners. First Fence N&S & Fence line West. (2) South 1/4 Corner - Found 5/8" Square Iron rod Per Ia. Dot Field Notes. (3) SE Corner - Found 10" Spike over 5/8" Iron Rod (Record Corner per Co. Engineer's Record) 1' deep - replace spike w/ 1/2" X 12" Iron Rod w/ yellow CAP #12068

PLAN VIEW

(Show a minimum of three reference ties to durable physical objects, relevant monuments, and physical conditions that will enable recovery of the corner.)



I hereby certify that this land surveying document was prepared and the related survey work was performed by me or under my direct personal supervision and that I am a duly licensed Land Surveyor under the laws of the State of Iowa.
J. Clifton Froman
 Date: 12/14/99 License number: 12068
 My license renewal date is December 31, 2000

Corners	Section	Twp	Range
Center	31	94N	12W
South 1/4 corner	31	94N	12W
SE Corner	31	94N	12W



Richard Karlson Schuler
 515-847-3273
 10/11

UNITED STATES PUBLIC LAND SURVEY CORNER CERTIFICATE

Section 30-94-12
 As referred to in
 Engr. Title Book

Land Survey Monuments situated in Section 31, Township 94 North Range 12 West, of the Fifth Principal Meridian, Chickasaw County, Iowa.

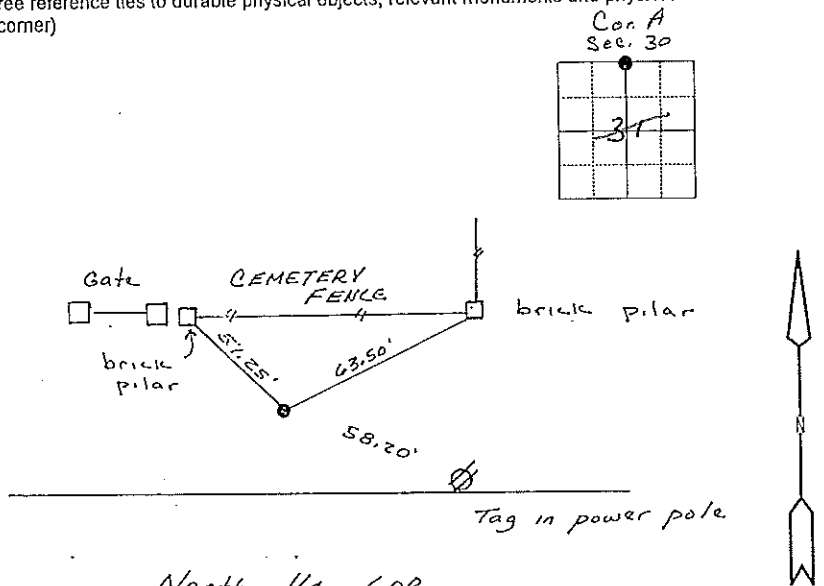
Previously recorded in N/A in County Recorder's Office.
 (book, page, document number, etc.)

(Show reason for preparing this certificate, the evidence and detailed procedures used in establishing the corner positions and monumentation found or placed.)

Monument Description and Remarks: Found D.O.T. Disc 6" deep in center of 300th St. Near east end of Cemetery on north side of road.

PLAN - VIEW

(Show a minimum of three reference ties to durable physical objects, relevant monuments and physical conditions that will enable recovery of the corner)



North 1/4 COR.
 Cor A
 30-94-12

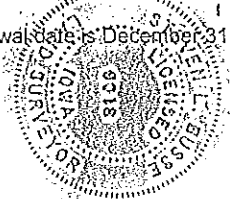
I hereby certify that the survey work was completed and this land surveying document was prepared by me or under my direct personal supervision and that I am a duly licensed land surveyor under the laws of the state of Iowa

Signature: Steve Busse
 Name typed or printed STEVE BUSSE

Date: 4/20/98 Reg. No. 9018

My license renewal date is December 31, 1998

SEAL



Corners	List Corners to be Indexed		
	Section	Twp	Range
N 1/4 COR.	31	94	12