

Prepared by & Return to Herold - Riscks Surveying, 10 East Main Street, New Hampton, IA 50658, Ph. 641-394-2725

UNITED STATES PUBLIC LAND SURVEY CORNER CERTIFICATE

Land Survey Monuments situated in Section ¹⁹30, Township 94 North, Range 12 West of the Fifth Principal Meridian, Chickasaw County, Iowa. 1., 2.) Not previously recorded in the County Recorder's office.

This certificate is being prepared in compliance with Iowa Code Chapter 355.11 because:

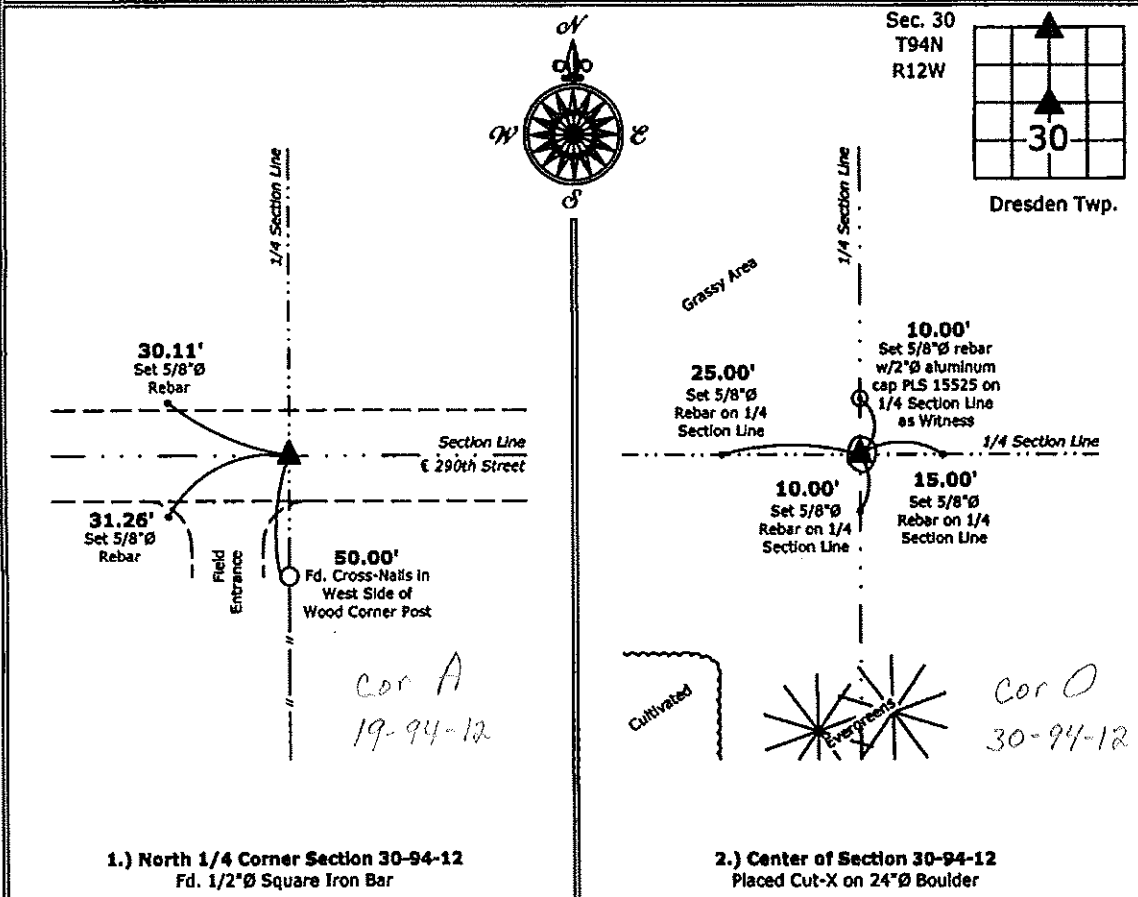
- 1 & 2 There is no certificate on file for this corner.
 There are no longer three valid ties of record.
 There are changes to reference ties of record.
 There is change of monumentation of record.
 To clarify description of record monument (ties).

Monument Description and Remarks:

- North 1/4 Corner:** Fd. 1/2"Ø Square Iron Bar from Information obtained on a Survey and Plat made by Lindsay Erdman on May 16, 2005, recorded in Doc. #2005-1212 in the County Recorder's office, New Hampton, Iowa.
- Center:** Placed Cut-X on a 24"Ø boulder at the Intersection of 1/4-1/4 Section Lines; there is no record of perpetuation of a monument at this corner.

PLAN - VIEW

(Show a minimum of three reference ties to durable physical objects, relevant monuments and physical conditions that will enable recovery of the corner.)



1.) North 1/4 Corner Section 30-94-12
 Fd. 1/2"Ø Square Iron Bar

2.) Center of Section 30-94-12
 Placed Cut-X on 24"Ø Boulder



I hereby certify that this land surveying document was prepared and the related survey work was performed by me or under my direct personal supervision and that I am a duly licensed Land Surveyor under the laws of the State of Iowa.

Paul R. Herold 7-11-13
 Paul R. Herold Date:

License number 15525
 My license renewal date is December 31, 2014.
 Sheets covered by this seal: Individual sheet only

List Corners to be Indexed			
Corners	Section	Twp.	Range
N 1/4	30	94	12
CTR	30	94	12

Project Number: 2013-075

FB: Chickasaw County 5, Pgs. 50-51