

DOCUMENT NO. **02031** FILED FOR RECORD THE 6/11 DAY OF STATE OF IOWA, CHICKASAW COUNTY
 RECORDING FEE \$ 6.00 April 19, 94 AT 9:40 By Leitha H. Ross Recorder
 TRANSFER FEE \$ ----- O'CLOCK A. M. BOOK 154 DEEDS PAGE 377 By LEITHA H. ROSS Deputy
 SLC19-90

UNITED STATES PUBLIC LAND SURVEY CORNER CERTIFICATE
 OF 31

*Section 31-94-12
 As referred to in
 Eng. Tie Book*

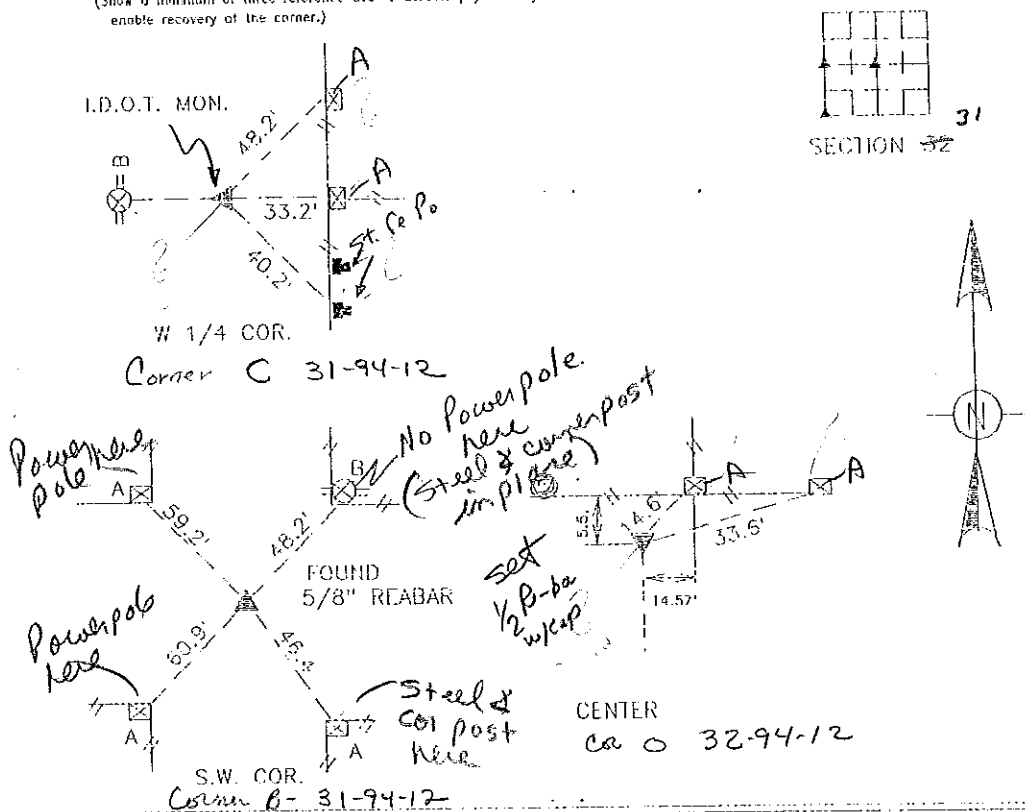
Land Survey Monuments situated in Section 32, Township 94, Range 12
 of the Fifth Principal Meridian, CHICKASAW County, Iowa. Previously recorded
 in _____ in County Recorder's Office.

(Book, page, document number, etc.)
 (Show reason for preparing this certificate, the evidence and detailed procedures used in establishing the corner positions and
 monumentation found or placed.)

Monument Description and Remarks	A	B	C	D	E
	--- "X" NAILS IN FENCE POST				
	--- CROSS NAILS IN POWER POLE				
	--- REBAR				
	--- CROSS NAILS IN FENCE POST				
	--- CROSS NAILS IN FENCE POST				

PLAN -- VIEW

(Show a minimum of three reference ties to durable physical objects, relevant monuments and physical conditions that will
 enable recovery of the corner.)



I hereby certify that data and surveying documents are prepared
 by me or under my direct personal supervision and that I am a duly
 Registered Land Surveyor under the laws of the state of Iowa

Signature: Terry D. Van Laningham
 Terry D. Van Laningham, P.L.S.

Date: Apr. 21, 1994 Reg. No. IA P.L.S. 10793
 My registration renewal date is December 31, 1995

SEAL



Section	Township	Range
W 1/4 32	94	12
32	94	12
32	94	12

*Placed in 112
 6/15/94*

TERRY VAN LANINGHAM P.L.S., INC.
 WAVERLY IOWA

04244

DOCUMENT No. FILED FOR RECORD THE 21st DAY OF STATE OF IOWA, CHICKASAW COUNTY:
 RECORDING FEE \$ 6.00 December 19 99 AT 9:22
 By: Cindy Messersmith Recorder
 M. A. BOOK 174 PAGE 217 Deputy

J. Clifton Froman, LS, 711 Park Avenue, Ackley, IA 50601 Ph 515-847-3273

UNITED STATES PUBLIC LAND SURVEY CORNER CERTIFICATE OF

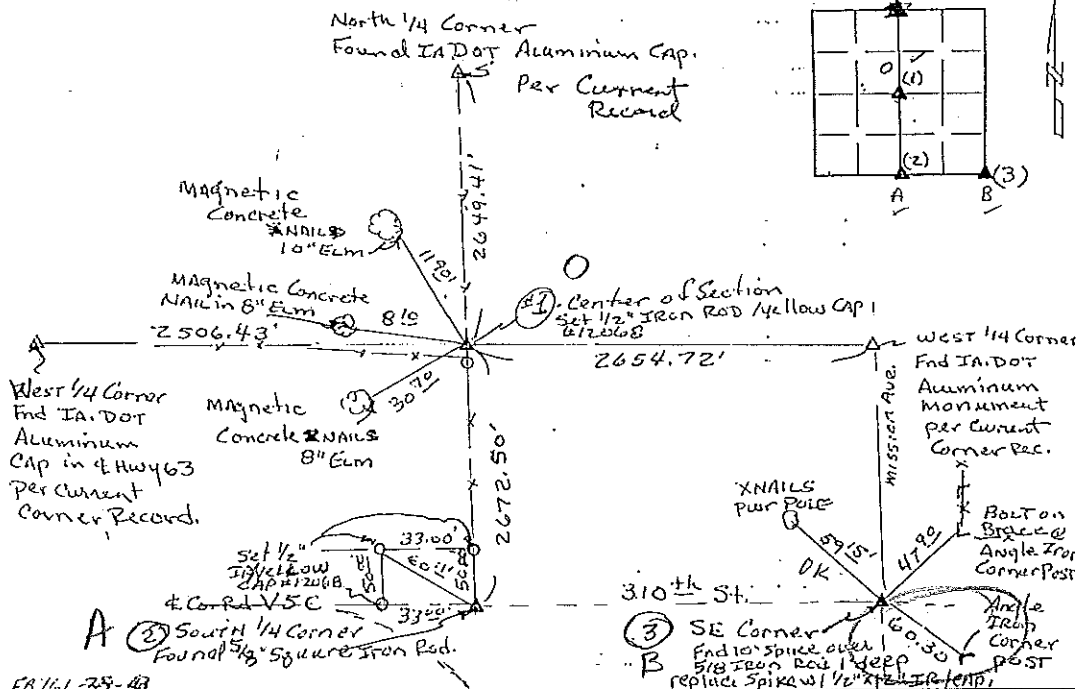
Land Survey Monuments situated in Section 31, Township 94 North, Range 12 West, of the Fifth Principal Meridian, Chickasaw County, Iowa, Previously recorded in N/A in County Recorder's Office

(Show reason for preparing this certificate, the evidence and detailed procedures used in establishing the corner positions and monumentation found or placed.)

Monument Description and Remarks: No Current corner certificates are on file for these corners. (1) Center of Section - Set 1/2" Iron Rod w/ yellow CAP at intersection of lines from EAST & WEST, North & South 1/4 Corners. Firs Fences N&S & Fence line WEST. (2) South 1/4 Corner - Found 5/8" Square Iron rod Per In. Dot Field Notes. (3) SE Corner - Found 10" Spike over 5/8" Iron Rod (Record Corner per Co. Engineer's Record) 1' deep - replace spike w/ 1/2" X 12" Iron Rod w/ yellow CAP #12068

PLAN VIEW

(Show a minimum of three reference ties to durable physical objects, relevant monuments, and physical conditions that will enable recovery of the corner.)



I hereby certify that this land surveying document was prepared and the related survey work was performed by me or under my direct personal supervision and that I am a duly licensed Land Surveyor under the laws of the State of Iowa.
 J. Clifton Froman
 Date: 12/14/99 License number: 12068
 My license renewal date is December 31, 2000

Corners	Section	Twp	Range
Center	31	94N	12W
South 1/4 corner	31	94N	12W
SE Corner	31	94N	12W



Richard Karlson Schuler
 515-847-3273
 10/11