

DOCUMENT No. **04243** FILED FOR RECORD THE **21st** DAY OF **December** 19 **99** AT **9:21** O'CLOCK **A.M.** BOOK **174** PAGE **216** STATE OF IOWA, CHICKASAW COUNTY: **Cindy Messersmith** Recorder **Shirley M. Froman** Deputy

J. Clifton Froman, LS, 711 Park Avenue, Ackley, IA 50601 Ph 515-847-3273

UNITED STATES PUBLIC LAND SURVEY CORNER CERTIFICATE
OF

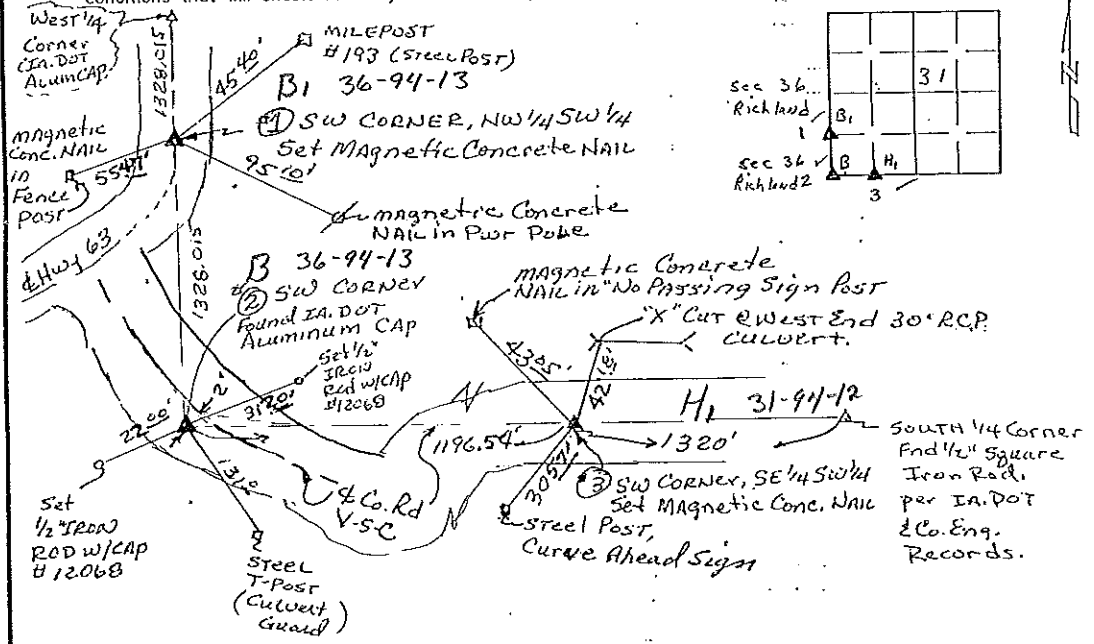
Land Survey Monuments situated in Section **31**, Township **94 North**, Range **12 West**, of the Fifth Principal Meridian, **Chickasaw** County, Iowa, Previously recorded in **N/A** in County Recorder's Office

(Show reason for preparing this certificate, the evidence and detailed procedures used in establishing the corner positions and monumentation found or placed.)
Monument Description and Remarks: **No certificates on file for these corners.**

- (1) SW Corner, NW 1/4 SW 1/4 - Set magnetic concrete NAIL in A.C.C. Pavement, U.S. Hwy 63, at Split of West Line SW 1/4.
- (2) SW Corner - Found IA, DOT Aluminum Cap Section Corner Monument.

PLAN VIEW

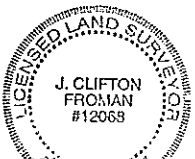
(Show a minimum of three reference ties to durable physical objects, relevant monuments, and physical conditions that will enable recovery of the corner.)



FB 161, P. 35-43

I hereby certify that this land surveying document was prepared and the related survey work was performed by me or under my direct personal supervision and that I am a duly licensed Land Surveyor under the laws of the State of Iowa.

J. Clifton Froman
Date: **12/14/99** License number: **12068**
My license renewal date is December 31, **2000**



Corners	Section	Twp	Range
NW Corner, SW 1/4 SW 1/4	31	94 N	12 W
SW Corner	31	94 N	12 W
SW corner, SE 1/4 SW 1/4	31	94 N	12 W

Pages or sheets covered by this sent: **1 of 1**