

DOCUMENT No. 04245 FILED FOR RECORD THE 21st DAY OF December 19 99 AT 2:23 P.M.
 RECORDING FEE \$ 6.00 BY Cindy Marscom Recorder
 TRANSFER FEE - \$ 0.00 O'CLOCK A M. BOOK 174 PAGE 218 By Shirley M. Phama Deputy

J. Clifton Froman, LS, 711 Park Avenue, Ackley, IA 50601 Ph 515-847-3273

UNITED STATES PUBLIC LAND SURVEY CORNER CERTIFICATE
 OF

Land Survey Monuments situated in Section 31, Township 94 North, Range 12 West, of the Fifth Principal Meridian, Chickasaw County, Iowa.

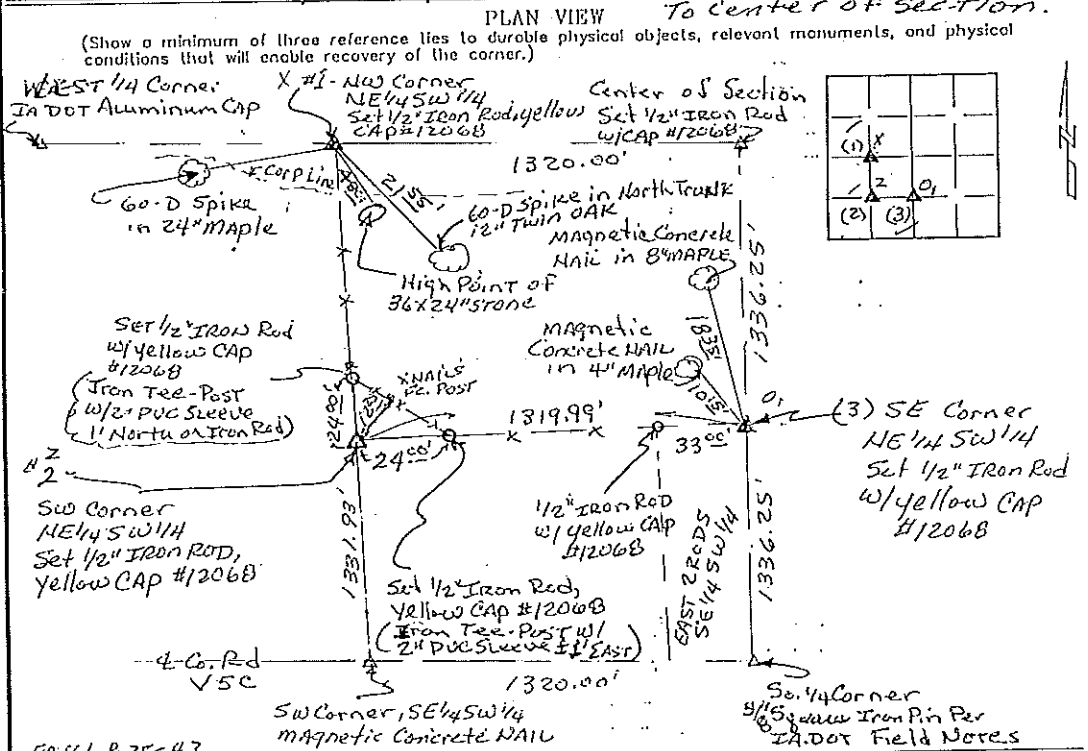
Previously recorded in N/A in County Recorder's Office

(Show reason for preparing this certificate, the evidence and detailed procedures used in establishing the corner positions and monumentation found or placed.)

Monument Description and Remarks: No Certificates on file for these corners

(1) NEW Corner, NE 1/4 SW 1/4 - Set 1/2" Iron Rod w/ yellow cap 1320.00' West of center of section on line from West 1/4 corner to center of section.

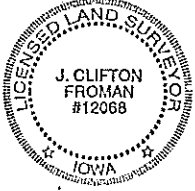
(2) SW Corner, NE 1/4 SW 1/4 - Set 1/2" Iron Rod w/ yellow cap 1319.99' West of SE corner NE 1/4 SW 1/4 on line from SW corner to SE corner NE 1/4 SW 1/4 - fits fence lines North & East - (3) SE Corner NE 1/4 SW 1/4 - Set 1/2" Iron Rod w/ yellow cap #12068 at mid point of line from South 1/4 corner to center of section.



FB 161, P. 35-43

I hereby certify that this land surveying document was prepared and the related survey work was performed by me or under my direct personal supervision and that I am a duly licensed Land Surveyor under the laws of the State of Iowa.

J. Clifton Froman
 Date: 12/14/99 License number: 12068
 My license renewal date is December 31, 2000



Corners	Section	Twp	Range
NE 1/4 SW 1/4	31	94 N	12 W
SW Corner, NE 1/4 SW 1/4	31	94 N	12 W
SE Corner, NE 1/4 SW 1/4	31	94 N	12 W

Pages or sheets covered by this seal: 1 of 1