

DOCUMENT No. **04243** FILED FOR RECORD THE **21st** DAY OF **December** 19 **99** AT **9:21** O'CLOCK **A.M.** BOOK **174** PAGE **216** STATE OF IOWA, CHICKASAW COUNTY: **Cindy Messersmith** Recorder
 RECORDING FEE \$ **6.00** By **Shirley M. Froman** Deputy
 TRANSFER FEE \$

J. Clifton Froman, LS, 711 Park Avenue, Ackley, IA 50601 Ph 515-847-3273

UNITED STATES PUBLIC LAND SURVEY CORNER CERTIFICATE
 OF

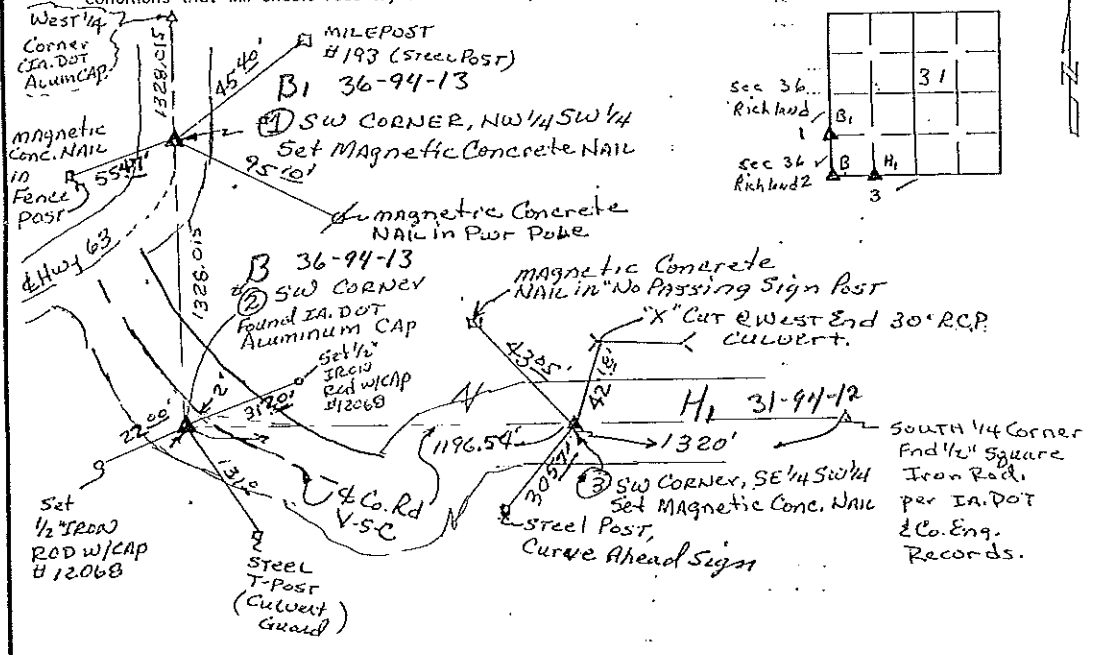
Land Survey Monuments situated in Section **31**, Township **94 North**, Range **12 West**, of the Fifth Principal Meridian, **Chickasaw** County, Iowa,
 Previously recorded in **N/A** in County Recorder's Office

(Show reason for preparing this certificate, the evidence and detailed procedures used in establishing the corner positions and monumentation found or placed.)
 Monument Description and Remarks: **No certificates on file for these corners.**

- (1) SW Corner, NW 1/4 SW 1/4 - Set magnetic concrete NAIL in A.C.C. Pavement, U.S. Hwy 63, at Split of West Line SW 1/4.
- (2) SW Corner - Found I.A. DOT Aluminum Cap Section Corner Monument.

PLAN VIEW

(Show a minimum of three reference ties to durable physical objects, relevant monuments, and physical conditions that will enable recovery of the corner.)



FB 161, P. 35-43

I hereby certify that this land surveying document was prepared and the related survey work was performed by me or under my direct personal supervision and that I am a duly licensed Land Surveyor under the laws of the State of Iowa.

J. Clifton Froman
 Date: **12/14/99** License number: **12068**
 My license renewal date is December 31, **2000**



Corners	Section	Twp	Range
NW Corner, SW 1/4 SW 1/4	31	94 N	12 W
SW Corner	31	94 N	12 W
SW corner, SE 1/4 SW 1/4	31	94 N	12 W

Pages or sheets covered by this sent: **1 of 1**

DOCUMENT NO. **02031** FILED FOR RECORD THE... DAY OF STATE OF IOWA, CHICKASAW COUNTY
 RECORDING FEE \$ **6.00** April, 19, 94 At **9:40** *Leitha H. Ross*, Recorder
 TRANSFER FEE \$ O'CLOCK A.M. BOOK **154** DEEDS PAGE **377** By **LEITHA H. ROSS** Deputy
 SLSB-90

UNITED STATES PUBLIC LAND SURVEY CORNER CERTIFICATE
 OF **31**

*Section 31-94-12
 As referred to in
 Eng. The Book*

Land Survey Monuments situated in Section **32**, Township **94**, Range **12**,
 of the Fifth Principal Meridian, **CHICKASAW** County, Iowa. Previously recorded
 in _____ in County Recorder's Office.

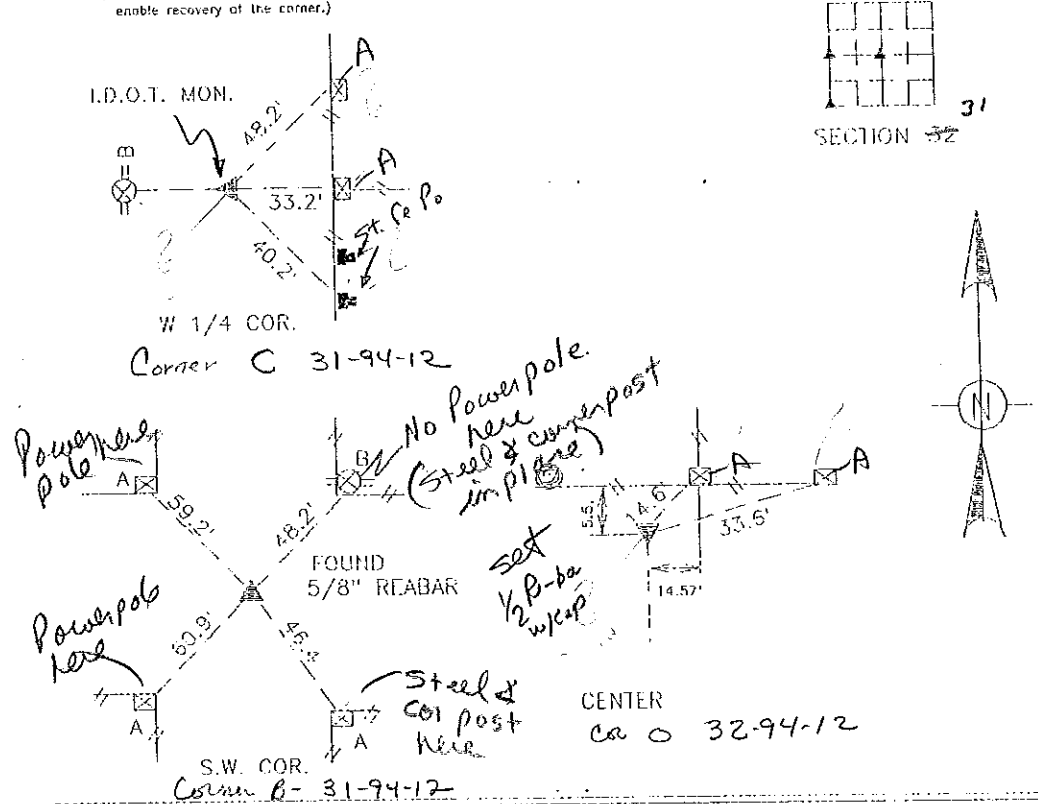
(Book, page, document number, etc.)
 (Show reason for preparing this certificate, the evidence and detailed procedures used in establishing the corner positions and
 monumentation found or placed.)

Monument Description and Remarks:

A	--- "X" NAILS IN FENCE POST
B	--- CROSS NAILS IN POWER POLE
C	--- REBAR
E	--- CROSS NAILS IN FENCE POST
E	--- CROSS NAILS IN FENCE POST

PLAN -- VIEW

(Show a minimum of three reference ties to durable physical objects, relevant monuments and physical conditions that will
 enable recovery of the corner.)



I hereby certify that this land survey and monumentation were prepared
 by me or under my direct personal supervision and that I am a duly
 Registered Land Surveyor under the laws of the state of Iowa

Signature: *Terry D. Van Laningham*
 Terry D. Van Laningham, P.L.S.

Date: *Apr. 21, 1994* Reg. No. *IA P.L.S. 10793*
 My registration renewal date is December 31, 1995



List Corners to be Indexed

Corners	Section	Township	Range
W 1/4	32	94	12
	32	94	12
	32	94	12

*Placed in 112
 Book 6/15/94*

TERRY VAN LANINGHAM P.L.S., INC.
 WAVERLY IOWA