

FILED 2005-0353
 RECORDER'S OFFICE
 CHICKASAW COUNTY, IOWA
 2005 MAR 2 AM 8 37
 CINDY MESSERSMITH
 COUNTY RECORDER

TeKIPPE ENGINEERING, P.C., 128 South Vine Street, West Union, Iowa 52176 Phone (563) 422-5131

UNITED STATES PUBLIC LAND SURVEY CORNER CERTIFICATE

OF

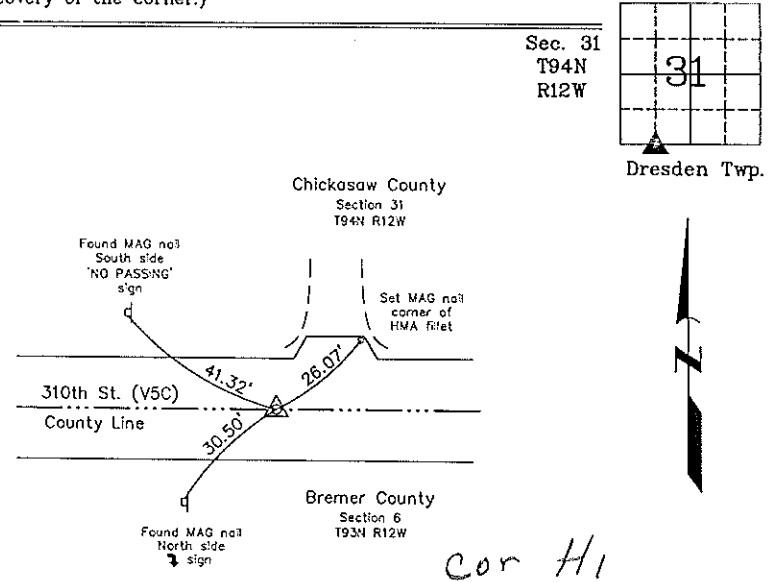
Land Survey Monuments situated in Section 31, Township 94 North, Range 12 West of the Fifth Principal Meridian, CHICKASAW County, Iowa. Previously recorded in Book 174, Page 216 in County Recorder's Office.
(book, page, document number, etc.)

(Show reason for preparing this certificate, the evidence and detailed procedures used in establishing the corner positions and monumentation found or placed.)

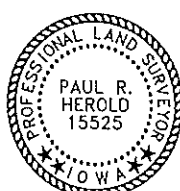
Monument Description and Remarks: SW Corner SE 1/4 - SW 1/4 Section 31 T94N R12W: Found MAG nail w/stainless steel washer 11442 with information obtained from the previous Section Corner Certificate recorded in the Chickasaw County Recorder's Office in Book 174, Page 216 on December 21, 1999. Information was also obtained from a Survey and Plat made by Lindsay Erdman recorded in the Chickasaw County Recorder's Office June 27, 2001 in Document #2001-1274. The Corner monument was different than in the previous Section Corner Certificate and one reference tie was added.

PLAN - VIEW

(Show a minimum of three reference ties to durable physical objects, relevant monuments and physical conditions that will enable recovery of the corner.)



SW Corner SE 1/4 - SW 1/4 Section 31 T94N R12W
 Found MAG nail w/stainless steel washer 11442



I hereby certify that this land surveying document was prepared and the related survey work was performed by me or under my direct personal supervision and that I am a duly licensed Land Surveyor under the laws of the State of Iowa.

Paul R. Herold 3-1-05
 Paul R Herold Date
 License number 15525
 My license renewal date is December 31, 2006.
 Sheets covered by this seal: Individual

List Corners to be Indexed			
Corners	Section	Twp.	Range
SW-SE-SW	31	94N	12W

Project Number 01058.LS
 FB, NRCS FG. 58-74
 X:\Section Corners\Sec. 31\31-94-12v.dwg

Cindy Eng...
 3/1/05

DOCUMENT No. **04243** FILED FOR RECORD THE **21st** DAY OF **December** 19 **99** AT **9:21** O'CLOCK **A.M.** BOOK **174** PAGE **216** STATE OF IOWA, CHICKASAW COUNTY: **Cindy Messersmith** Recorder **Shirley M. Froman** Deputy

J. Clifton Froman, LS, 711 Park Avenue, Ackley, IA 50601 Ph 515-847-3273

UNITED STATES PUBLIC LAND SURVEY CORNER CERTIFICATE
OF

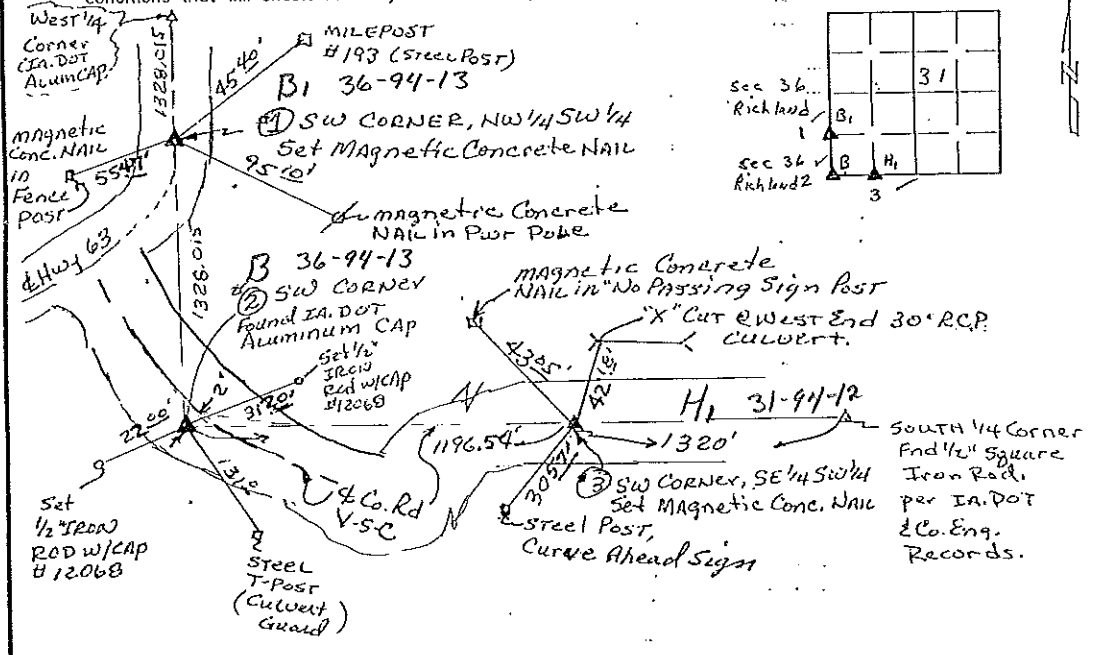
Land Survey Monuments situated in Section **31**, Township **94 North**, Range **12 West**, of the Fifth Principal Meridian, **Chickasaw** County, Iowa, Previously recorded in **N/A** in County Recorder's Office

(Show reason for preparing this certificate, the evidence and detailed procedures used in establishing the corner positions and monumentation found or placed.)
Monument Description and Remarks: **No certificates on file for these corners.**

- (1) SW Corner, NW 1/4 SW 1/4 - Set magnetic concrete NAIL in A.C.C. Pavement, U.S. Hwy 63, at Split of West Line SW 1/4.
- (2) SW Corner - Found IA, DOT Aluminum Cap Section Corner Monument.

PLAN VIEW

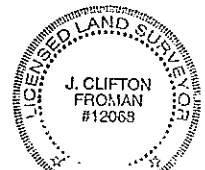
(Show a minimum of three reference ties to durable physical objects, relevant monuments, and physical conditions that will enable recovery of the corner.)



FB 161, P. 35-43

I hereby certify that this land surveying document was prepared and the related survey work was performed by me or under my direct personal supervision and that I am a duly licensed Land Surveyor under the laws of the State of Iowa.

J. Clifton Froman
Date: **12/14/99** License number: **12068**
My license renewal date is December 31, **2000**



Corners	Section	Twp	Range
NW Corner, SW 1/4 SW 1/4	31	94 N	12 W
SW Corner	31	94 N	12 W
SW corner, SE 1/4 SW 1/4	31	94 N	12 W

Pages or sheets covered by this sent: **1 of 1**