

FILED 2001-1807
 RECORDER'S OFFICE
 CHICKASAW COUNTY, IOWA

2001 AUG 22 AM 8 40

CINDY MESSERSMITH
 COUNTY RECORDER

TEKIPPE ENGINEERING, P.C., 128 South Vine Street, West Union, Iowa 52175 Phone (319) 422-5131

UNITED STATES PUBLIC LAND SURVEY CORNER CERTIFICATE

OF

Land Survey Monuments situated in Section 31, Township 94 North, Range 12 West of the Fifth Principal Meridian, CHICKASAW County, Iowa.

Previously recorded in Book 174, Page 217 in County Recorder's Office.
 (book, page, document number, etc.)

(Show reason for preparing this certificate, the evidence and detailed procedures used in establishing the corner positions and monumentation found or placed.)

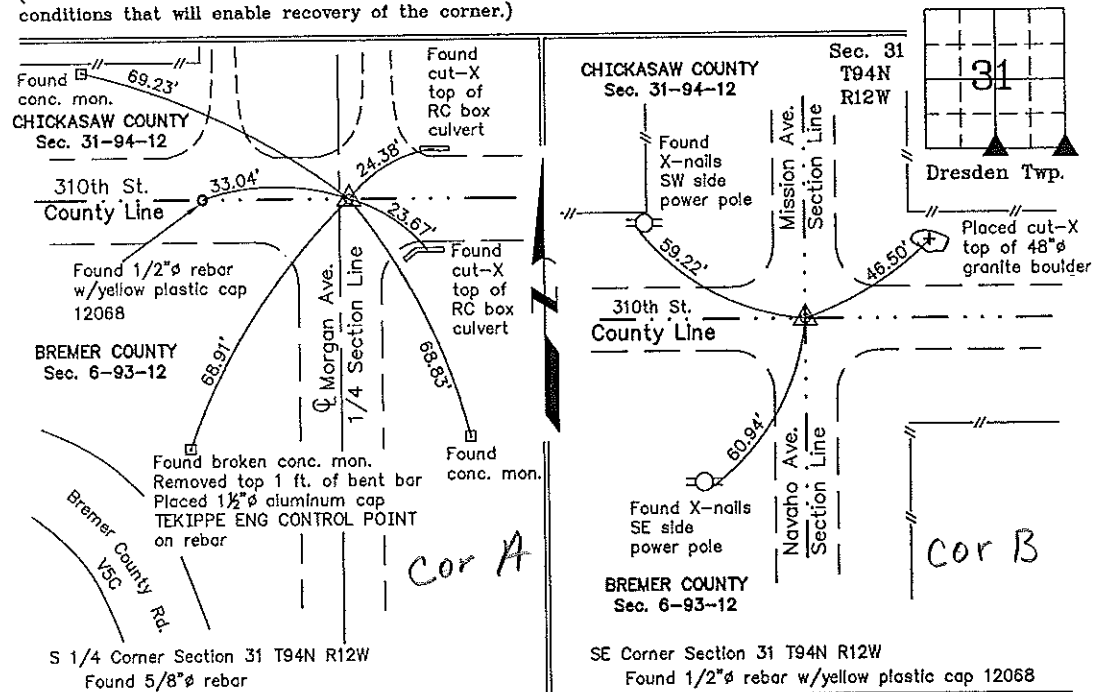
Monument Description and Remarks: S 1/4 Corner Section 31 T94N R12W: Found 5/8"ø with information obtained from reference ties in the Bremer County Engineer's Office and a Section Corner Certificate recorded in the Chickasaw County Recorder's Office in Book 174, Page 217. The previous Section Corner Certificate did not show the five reference ties noted by the Chickasaw County Engineer's Office.

SE Corner Section 31 T94N R12W: Found 1/2"ø rebar w/yellow plastic cap 12068 with information obtained from reference ties obtained in the Bremer County Engineer's Office and a Section Corner Certificate recorded in the Chickasaw County Recorder's Office in Book 174, Page 217. Two previous reference ties are now unreliable.

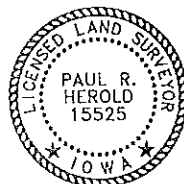
PLAN - VIEW

Project Number 01058.18
 FR. NRCS PG. 68-74

(Show a minimum of three reference ties to durable physical objects, relevant monuments and physical conditions that will enable recovery of the corner.)



I hereby certify that this land surveying document was prepared and the related survey work was performed by me or under my direct personal supervision and that I am a duly licensed Land Surveyor under the laws of the State of Iowa.



Paul R. Herold 8-21-01
 Paul R Herold Date
 License number 15525
 My license renewal date is December 31, 2002.
 Sheets covered by this seal: Individual

List Corners to be Indexed			
Corners	Section	Twp.	Range
S 1/4	31	94N	12W
SE	31	94N	12W

Filed 9-11-01

County Engineer's
 Copy

04244

DOCUMENT No. _____ FILED FOR RECORD THE 21st DAY OF _____ STATE OF IOWA, CHICKASAW COUNTY:
 RECORDING FEE \$ 6.00 December 19 99 AT 9:22 By: Cindy M. Murren Recorder
 TRANSFER FEE - \$ _____ O'CLOCK A M. BOOK 174 PAGE 217 By: Whitney M. Payne Deputy

J. Clifton Froman, LS, 711 Park Avenue, Ackley, IA 50601 Ph 515-847-3273

UNITED STATES PUBLIC LAND SURVEY CORNER CERTIFICATE OF

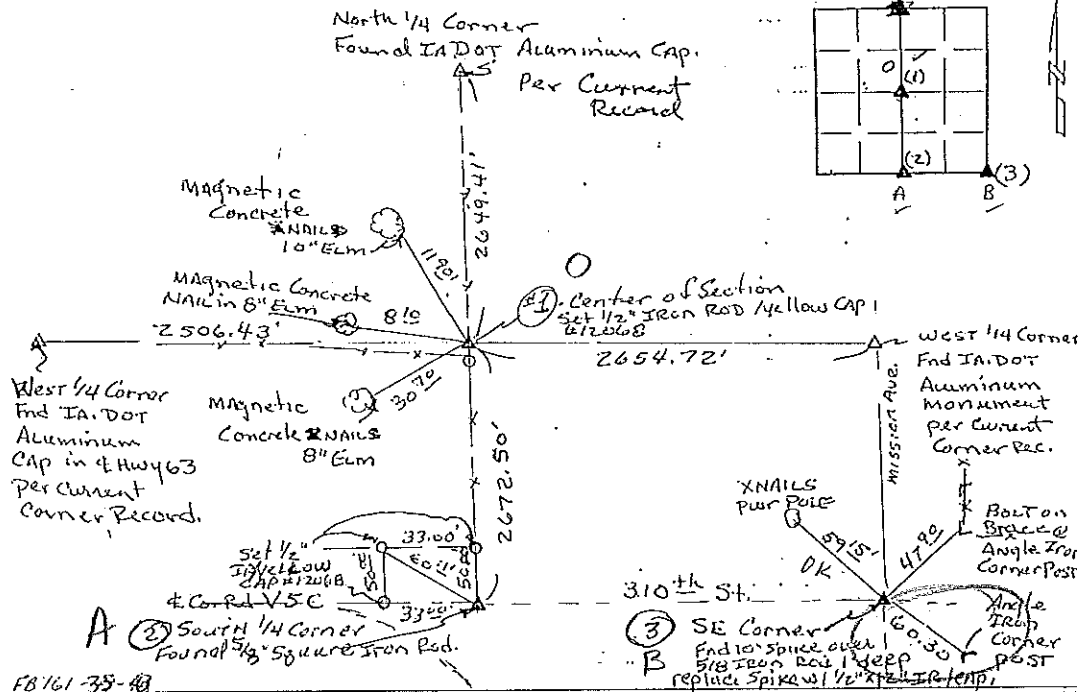
Land Survey Monuments situated in Section 31, Township 94 North, Range 12 West, of the Fifth Principal Meridian, Chickasaw County, Iowa, Previously recorded in N/A in County Recorder's Office

(Show reason for preparing this certificate, the evidence and detailed procedures used in establishing the corner positions and monumentation found or placed.)

Monument Description and Remarks: No current corner certificates are on file for these corners. (1) Center of Section - Set 1/2" Iron Rod w/ yellow CAP at intersection of lines from EAST & WEST, North & South 1/4 Corners. First Fence's N&S & Fence line WEST. (2) South 1/4 Corner - Found 5/8" Square Iron rod Per Ia. DOT Field Notes. (3) SE Corner - Found 10" Spike over 5/8" Iron Rod (Record Corner per Co. Engineer's Record) 1' deep - replace spike w/ 1/2" X 12" Iron Rod w/ yellow CAP #12068

PLAN VIEW

(Show a minimum of three reference ties to durable physical objects, relevant monuments, and physical conditions that will enable recovery of the corner.)



I hereby certify that this land surveying document was prepared and the related survey work was performed by me or under my direct personal supervision and that I am a duly licensed Land Surveyor under the laws of the State of Iowa.
J. Clifton Froman
 Date: 12/14/99 License number: 12068
 My license renewal date is December 31, 2000

Corners	Section	Twp	Range
Center	31	94N	12W
South 1/4 corner	31	94N	12W
SE Corner	31	94N	12W



Richard Karlson Schuler
 515-847-3273
 10/11

DOCUMENT No. 02031 FILED FOR RECORD THE... DAY OF... STATE OF IOWA, CHICKASAW COUNTY
 RECORDING FEE \$ 6.00 April, 1994 AT 9:40 By Leitha N. Ross Recorder
 TRANSFER FEE \$... O'CLOCK A. M. BOOK 154 Deeds PAGE 377 By... Deputy

UNITED STATES PUBLIC LAND SURVEY CORNER CERTIFICATE
 OF

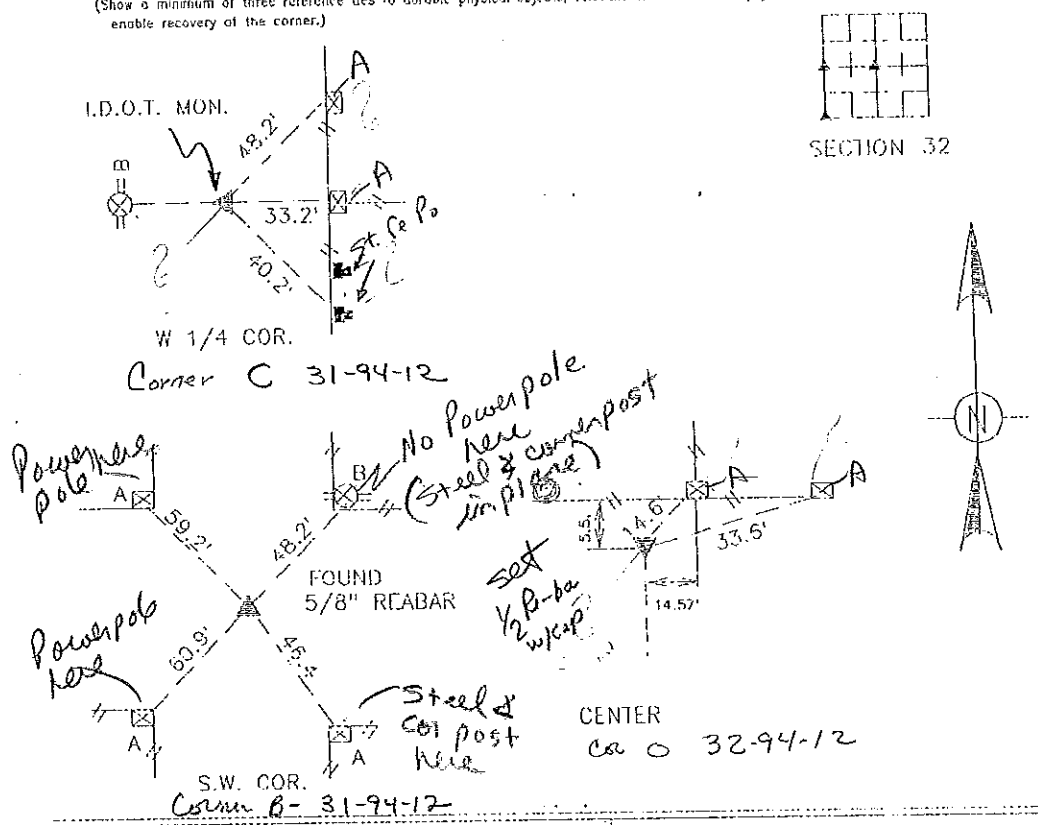
Land Survey Monuments situated in Section 32 Township 94 , Range 12 ,
 of the Fifth Principal Meridian, CHICKASAW County, Iowa. Previously recorded
 in _____ in County Recorder's Office.

(Look, page, document number, etc.)
 (Show reason for preparing this certificate, the evidence and detailed procedures used in establishing the corner positions and
 monumentation found or placed.)

Monument Description and Remarks: A -- "X" NAILS IN FE. CORNER POST
 B -- CROSS NAILS IN POWER POLE
 C -- REBAR
 E -- CROSS NAILS IN FENCE POST
 E -- CROSS NAILS IN FENCE POST

PLAN --- VIEW

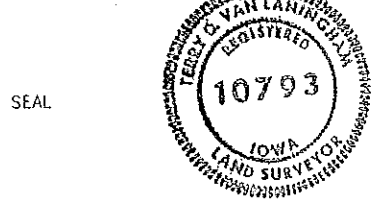
(Show a minimum of three reference ties to durable physical objects, relevant monuments and physical conditions that will
 enable recovery of the corner.)



I hereby certify that this said survey and documents are prepared
 by me or under my direct personal supervision and that I am a duly
 Registered Land Surveyor under the laws of the state of Iowa

Signature: Terry D. Van Laningham
 Terry D. Van Laningham, P.L.S.

Date: Apr. 21, 1994 Reg. No. IA, P.L.S. 10793
 My registration renewal date is December 31, 1995



List Corners to be Indexed

Corners	Section	Township	Range
W 1/4	32	94	12
2	32	94	12
-	32	94	12

Placed in 112.
 6/15/94

TERRY VAN LANINGHAM P.L.S., INC.
 WAVERLY IOWA