

Prepared by & Return to: Herold - Reicks Surveying, 10 East Main Street, New Hampton, IA 56659, Ph. 641-394-2125

UNITED STATES PUBLIC LAND SURVEY CORNER CERTIFICATE

Land Survey Monuments situated in Section 30, Township 94 North, Range 12 West of the Fifth Principal Meridian, Chickasaw County, Iowa. 1., 2.) Not previously recorded in the County Recorder's office.

This certificate is being prepared in compliance with Iowa Code Chapter 355.11 because:

- 1 & 2 There is no certificate on file for this corner.
 There are no longer three valid ties of record.
 There are changes to reference ties of record.
 There is change of monumentation of record.
 To clarify description of record monument (ties).

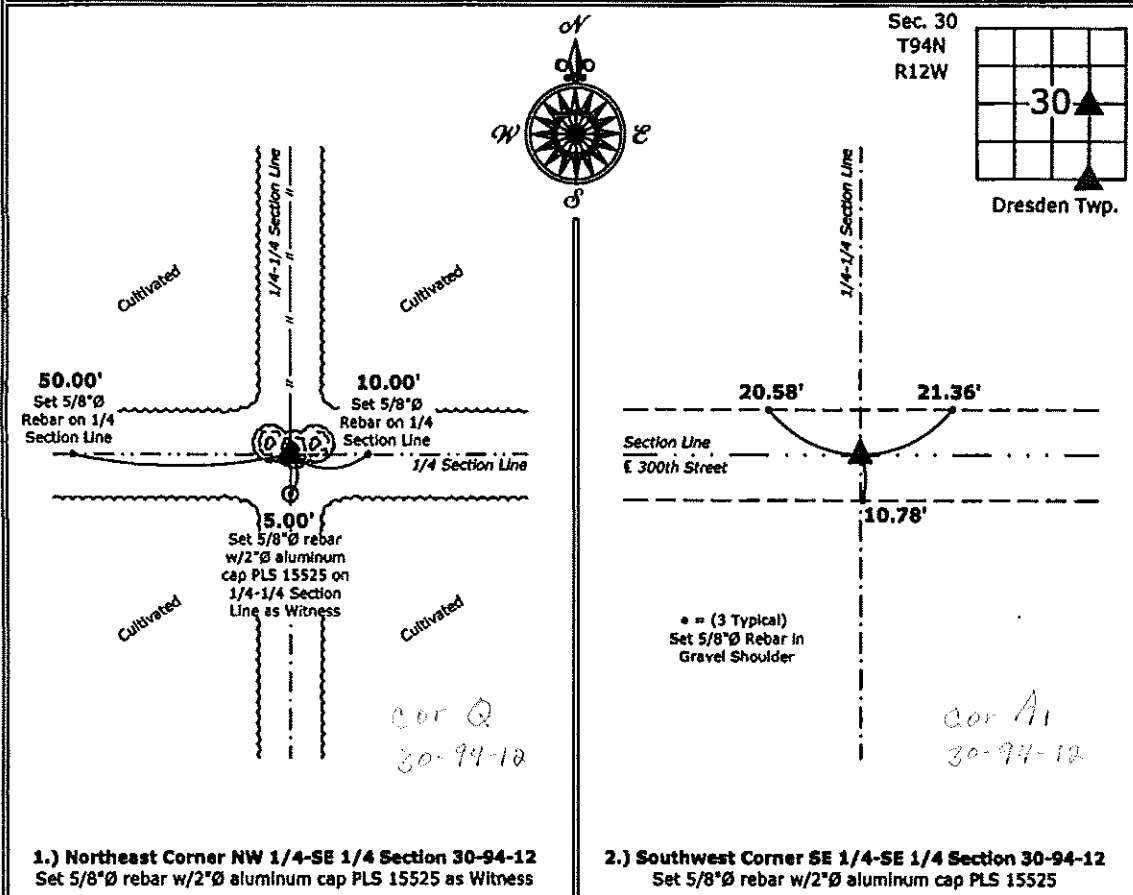
Monument Description and Remarks:

1.) **Northeast Corner NW 1/4-SE 1/4:** Position of corner determined equidistant and online between the East 1/4 Corner and Center of Section 30. Unable to monument corner; position falls in 72"Ø oak cluster. Set 5/8"Ø rebar w/2"Ø aluminum cap PLS 15525 as Witness 5.00' South and online.

2.) **Southwest Corner SE 1/4-SE 1/4:** Set 5/8"Ø rebar w/2"Ø aluminum cap PLS 15525 equidistant and online between the South 1/4 and Southeast Corners of Section 30.

PLAN - VIEW

(Show a minimum of three reference ties to durable physical objects, relevant monuments and physical conditions that will enable recovery of the corner.)



1.) **Northeast Corner NW 1/4-SE 1/4 Section 30-94-12**
 Set 5/8"Ø rebar w/2"Ø aluminum cap PLS 15525 as Witness

2.) **Southwest Corner SE 1/4-SE 1/4 Section 30-94-12**
 Set 5/8"Ø rebar w/2"Ø aluminum cap PLS 15525



I hereby certify that this land surveying document was prepared and the related survey work was performed by me or under my direct personal supervision and that I am a duly licensed Land Surveyor under the laws of the State of Iowa.

Paul R. Herold 7-11-13
 Paul R. Herold Date:
 License number 15525
 My license renewal date is December 31, 2014.
 Sheets covered by this seal: Individual sheet only

List Corners to be Indexed			
Corners	Section	Twp.	Range
NE-NW-SE	30	94	12
SW-SE-SE	30	94	12

Project Number: 2013-075
 FB: Chickasaw County 5, Pgs. 50-51