

Chickasaw Co. Recorder  
Cindy Messersmith  
**Fee Book 2008-1520**

08/06/2008 @10:02AM  
SCC SEC COR CERT # Pages: 1  
Book: Page: \$7.00  
Total Fees:

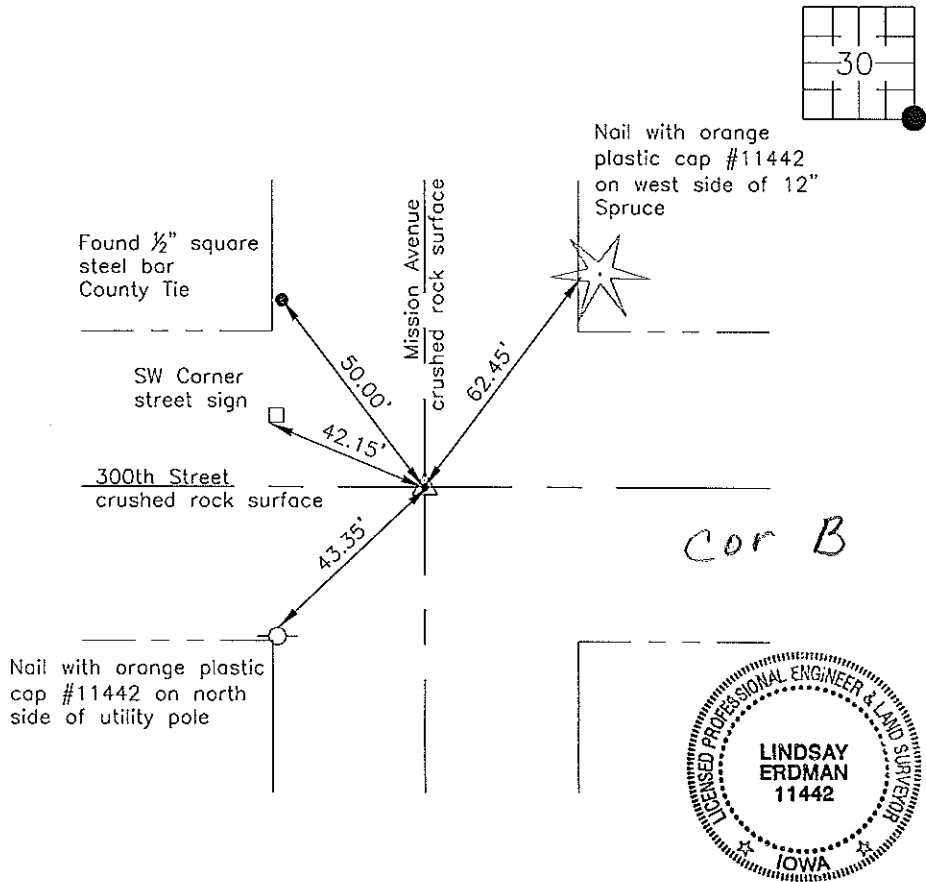
Prepared by: Erdman Engineering, P.C., 708 Commerce Drive, P.O. Box 246, Decorah, Iowa 52101 (563) 382-4194

United States Public Land Survey Corner Certificate  
of

Land Survey Monuments situated in Section 30, Township 94., Range 12 West of the 5th Principal Meridian in Chickasaw County, Iowa. Previously recorded in does not apply in the county Recorder's Office.

Monument Description and Remarks: This certificate is prepared in accordance with Section 193C of the Code of Iowa. No previous certificate has been filed for this corner location. Chickasaw County Engineer's Reference Ties show that an iron pin was found and retied in 1954. We found a 1/2" square steel bar that had been used previously as a tie marker. From this remaining tie we found a 3/4" square steel bar at the approximate centerline-centerline intersection of the county roads. We used the steel bar as the SE Corner of Section 30, Township 94 North, Range 12 West.

Plan-View



I hereby certify that this land surveying document was prepared and the related survey work was performed by me or under my direct personal supervision and that I am a duly licensed Land Surveyor under the laws of the State of Iowa.

Signature Lindsay Erdman  
Lindsay Erdman, P.E. and P.L.S., Iowa License Number 11442

Date: 8/1/08

My license renewal date is December 31, 2008

Corner(s) to be Indexed

Corner	Section	Township	Range
SE	30	94	12