

Prepared by & Return to: Herold - Reicks Surveying, 10 East Main Street, New Hampton, IA 50659, Ph. 641-394-2725

### UNITED STATES PUBLIC LAND SURVEY CORNER CERTIFICATE

Land Survey Monuments situated in Section 31, Township 94 North, Range 12 West of the Fifth Principal Meridian, Chickasaw County, Iowa. Not previously recorded in the County Recorder's office.

This certificate is being prepared in compliance with Iowa Code Chapter 355.11 because:

- 1 & 2  There is no certificate on file for this corner.  
 There are no longer three valid ties of record.  
 There are changes to reference ties of record.  
 There is change of monumentation of record.  
 To clarify description of record monument (ties).

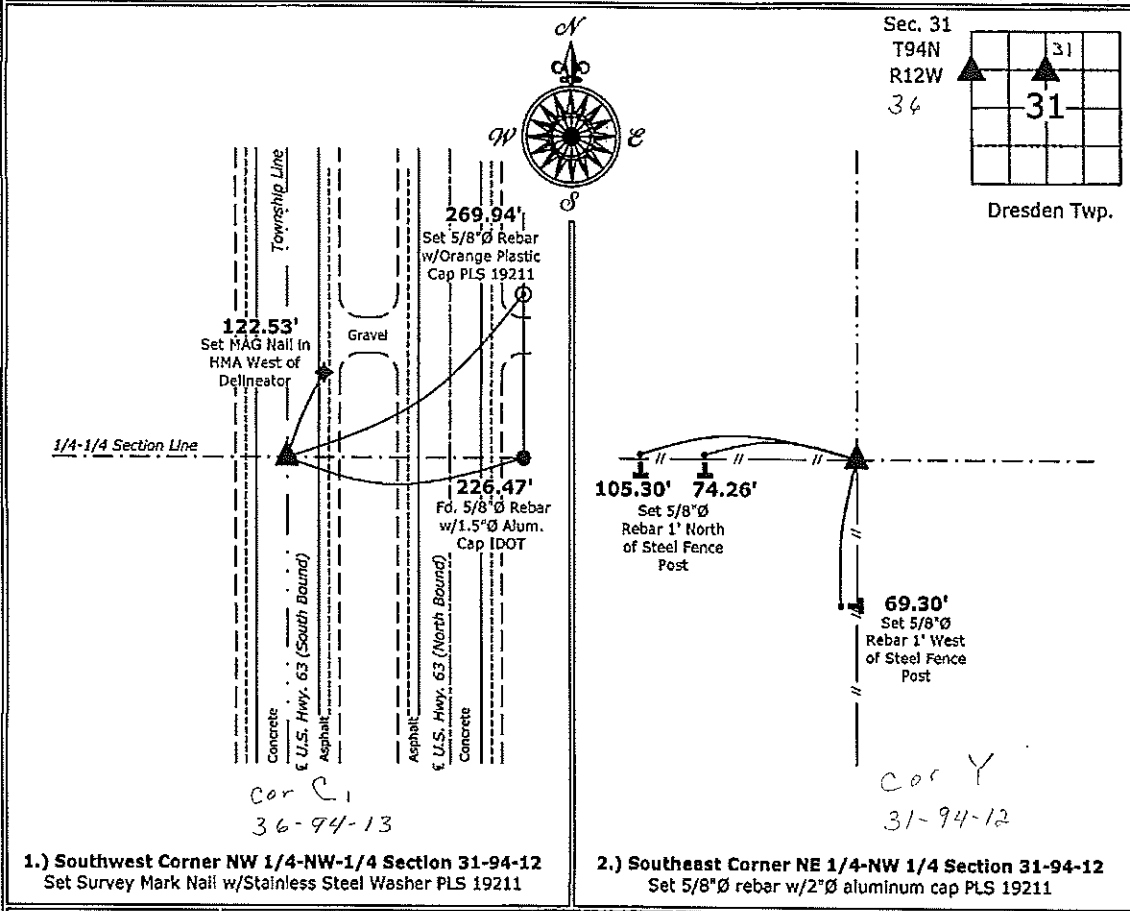
Monument Description and Remarks:

1.) Southwest Corner NW 1/4-NW-1/4: Set Survey Mark Nail w/Stainless Steel Washer PLS 19211 equidistant and online between the Northwest and West 1/4 Corners of Section 31.

2.) Southeast Corner NE 1/4-NW 1/4: Set 5/8"Ø rebar with 2"Ø aluminum Cap PLS 19211 equidistant and online between the North 1/4 Corner and Center of Section 31.

#### PLAN - VIEW

(Show a minimum of three reference ties to durable physical objects, relevant monuments and physical conditions that will enable recovery of the corner.)



I hereby certify that this land surveying document was prepared and the related survey work was performed by me or under my direct personal supervision and that I am a duly licensed Land Surveyor under the laws of the State of Iowa.

*Kirk D. Reicks* 10-28-13  
 Kirk D. Reicks Date:

License number 19211  
 My license renewal date is December 31, 2014.  
 Sheets covered by this seal: Individual sheet only

List Corners to be Indexed			
Corners	Section	Twp.	Range
SW-NW-NW	31	94	12
SE-NE-NW	31	94	12

Project Number: 2013-1863  
 FB: Chickasaw 5, Pgs. 69-70