

UNITED STATES PUBLIC LAND SURVEY CORNER CERTIFICATE  
 OF

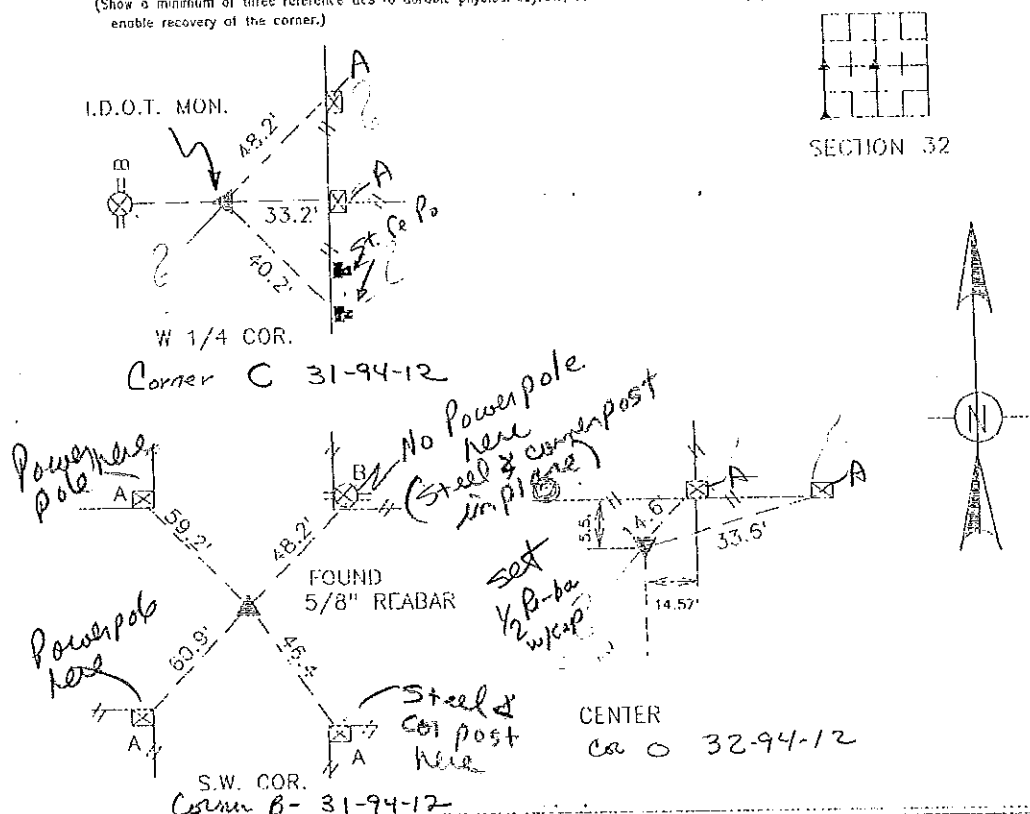
Land Survey Monuments situated in Section 32, Township 94, Range 12,  
 of the Fifth Principal Meridian, CHICKASAW County, Iowa. Previously recorded  
 in \_\_\_\_\_ in County Recorder's Office.

(Look, page, document number, etc.)  
 (Show reason for preparing this certificate, the evidence and detailed procedures used in establishing the corner positions and  
 monumentation found or placed.)

- Monument Description and Remarks:
- A -- "X" NAILS IN FE. CORNER POST
  - B -- CROSS NAILS IN POWER POLE
  - C -- REBAR
  - E -- CROSS NAILS IN FENCE POST
  - E -- CROSS NAILS IN FENCE POST

PLAN --- VIEW

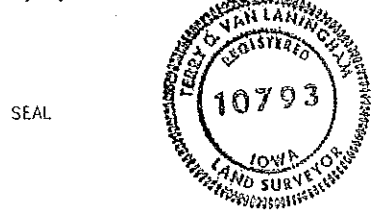
(Show a minimum of three reference ties to durable physical objects, relevant monuments and physical conditions that will  
 enable recovery of the corner.)



I hereby certify that this land survey and documents are prepared  
 by me or under my direct personal supervision and that I am a duly  
 Registered Land Surveyor under the laws of the state of Iowa

Signature: Terry D. Van Laningham  
 Terry D. Van Laningham, P.L.S.

Date: Apr. 21, 1994 Reg. No. IA, P.L.S. 10793  
 My registration renewal date is December 31, 1995



List Corners to be Indexed

Corners	Section	Township	Range
W 1/4	32	94	12
"	32	94	12
"	32	94	12

Placed in 112.  
 6/15/94

TERRY VAN LANINGHAM P.L.S., INC.  
 WAVERLY IOWA