

Instr. Number: 2020-2372  
 Recorded: 10/20/2020 at 9:41:09.0 AM  
 Pages 1  
 County Recording Fee: \$7.00  
 Iowa E-Filing Fee: \$3.00  
 Combined Fee: \$10.00  
 Revenue Tax:  
 Shirley Troyna RECORDER  
 Chickasaw County, Iowa

Prepared by & Return to: Herald - Reicks Surveying, 2206 East Bremer Avenue, Waverly, IA 50677, Ph. 319-463-5167

**United States Public Land Survey Corner Certificate**

Land Survey Monument situated in  
 Section 32, Township 94 North, Range 12 West of the Fifth Principal Meridian, Chickasaw County, Iowa.  
 On file in Book 174, Page 216 in the County Recorder's office.

This certificate is being prepared in compliance with Iowa Code Chapter 355.11 because:

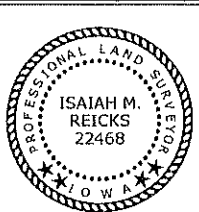
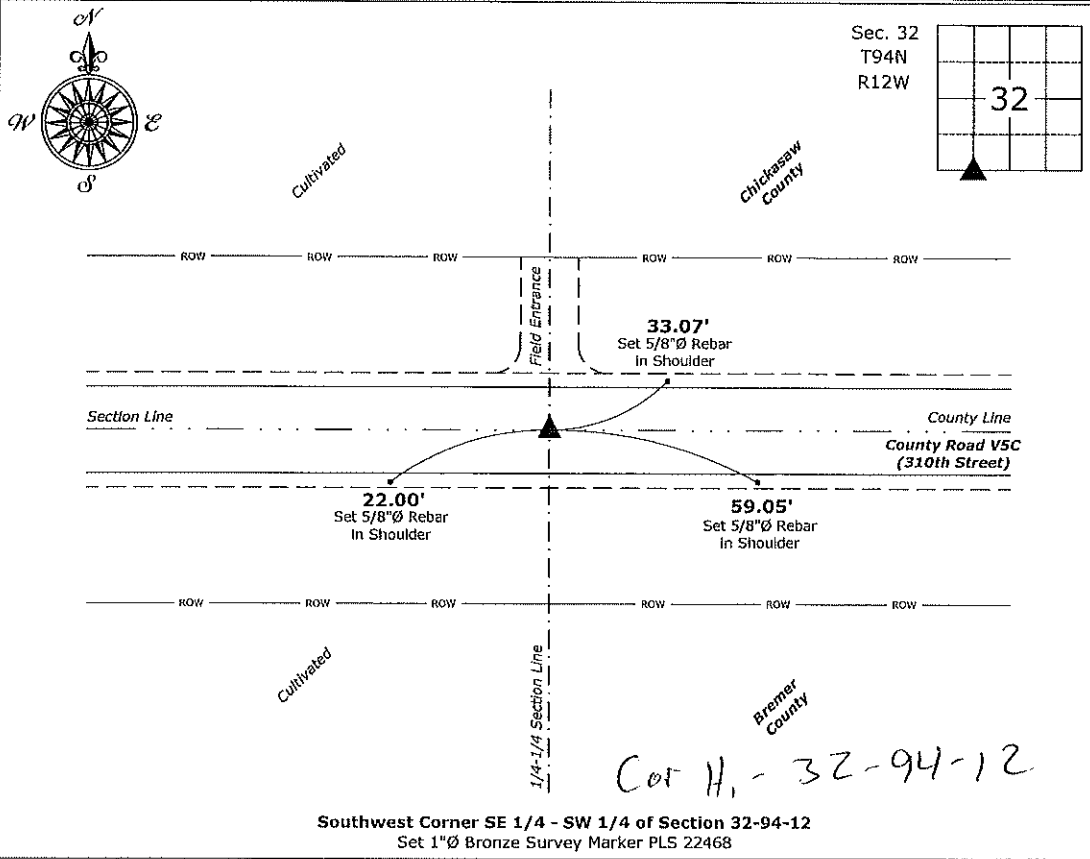
- There is no certificate on file for this corner.
- There are no longer three valid ties of record.
- There are changes to reference ties of record.
- There is change of monumentation of record.
- To clarify description of record monument (ties).

**Monument Description and Remarks:**

**Southwest Corner SE 1/4 - SW 1/4:** Found Cut-X with information obtained from the previously recorded Section Corner Certificate and from a Survey, as recorded in Document #2018-0596, on file in the County Recorder's office. Set 1"Ø Bronze Survey Marker PLS 22468 with coordinates of the found location obtained prior to highway reconstruction. Corner reset in conjunction with Project No. FM-C009(81)--55-09.

**Plan View**

(Show a minimum of three reference ties to durable physical objects, relevant monuments and physical conditions that will enable recovery of the corner.)



I hereby certify that this land surveying document was prepared and the related survey work was performed by me or under my direct personal supervision and that I am a duly licensed Land Surveyor under the laws of the State of Iowa.

*Isiah M. Reicks* 10-19-20  
 Isiah M. Reicks Date:

License number 22468  
 My license renewal date is December 31, 2021.  
 Sheets covered by this seal: Individual sheet only

List Corner to be Indexed			
Corner	Section	Twp.	Range
SW-SE-SW	32	94	12
Project Number: 2020-800			
FB: Bremer-13, Pg. 77			

File: I:\Projects - WO\County Control Systems\WO\BREMER\BREMER-3 (Frederika)\BREMER-3.dwg, 10/19/2020 3:51:26 PM