

Prepared by & Return to: Herald - Reicks Surveying, 10 East Main Street, New Hampton, IA 50659, Ph. 641-394-2725

### United States Public Land Survey Corner Certificate

Land Survey Monument situated in  
 Section 35, Township 94 North, Range 12 West of the Fifth Principal Meridian, Chickasaw County, Iowa.  
 Not on file the County Recorder's office.

This certificate is being prepared in compliance with Iowa Code Chapter 355.11 because:

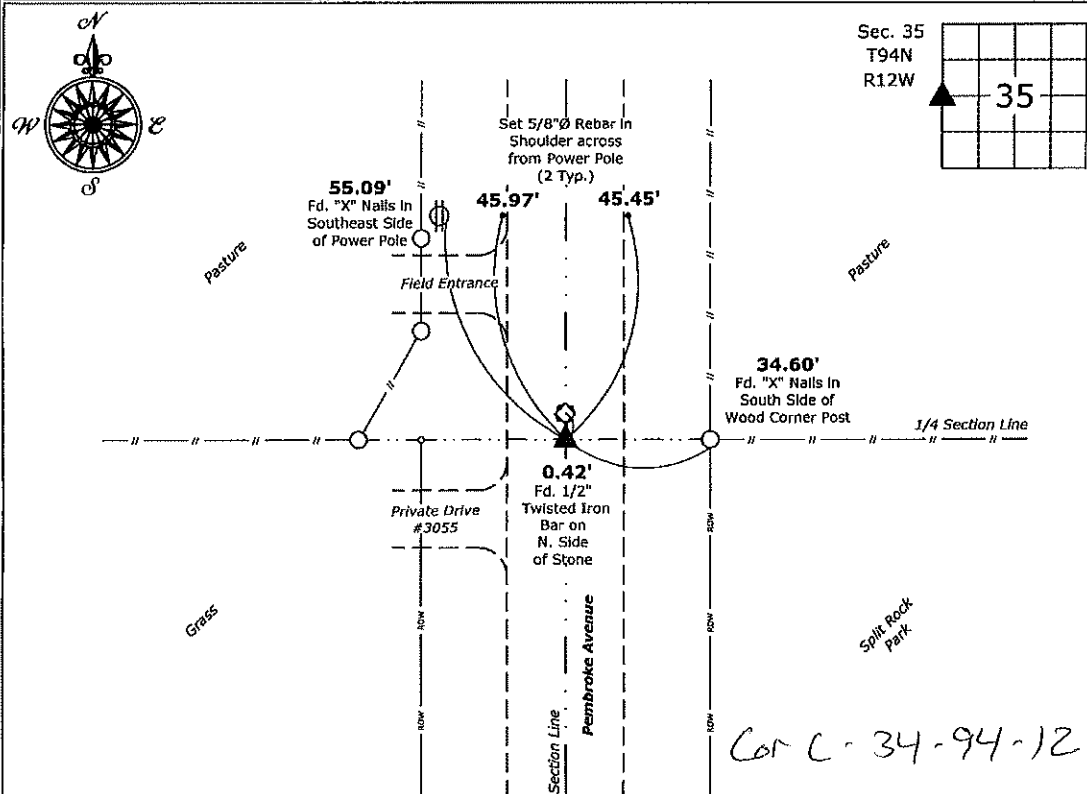
- There is no certificate on file for this corner.
- There are no longer three valid ties of record.
- There are changes to reference ties of record.
- There is change of monumentation of record.
- To clarify description of record monument (ties).

**Monument Description and Remarks:**

**West Quarter Corner:** County Engineer's Section Corner Tie notes indicate "Iron Pin on North Side of Stone". Found 1"Ø Pipe (top bent) and 1/2" Square Twisted Bar at the road surface. Excavated 18" deep and found a 4" x 6" Pointed Brown Granite Stone with said 1/2" Square Twisted Bar on the North Side. Placed Cut "X" on the high point of said Stone and removed the 1"Ø Pipe. Used the Stone as the Corner.

**Plan View**

(Show a minimum of three reference ties to durable physical objects, relevant monuments and physical conditions that will enable recovery of the corner.)



**West 1/4 Corner of Section 35-94-12**  
 Fd. 4" x 6" Pointed Brown Granite Stone, Placed Cut "X" on the Stone

*Cor C - 34-94-12*



I hereby certify that this land surveying document was prepared and the related survey work was performed by me or under my direct personal supervision and that I am a duly licensed Land Surveyor under the laws of the State of Iowa.

*Kirk D. Reicks 1-11-21*  
 Kirk D. Reicks Date:  
 License number 19211  
 My license renewal date is December 31, 2022.  
 Sheets covered by this seal: Individual sheet only

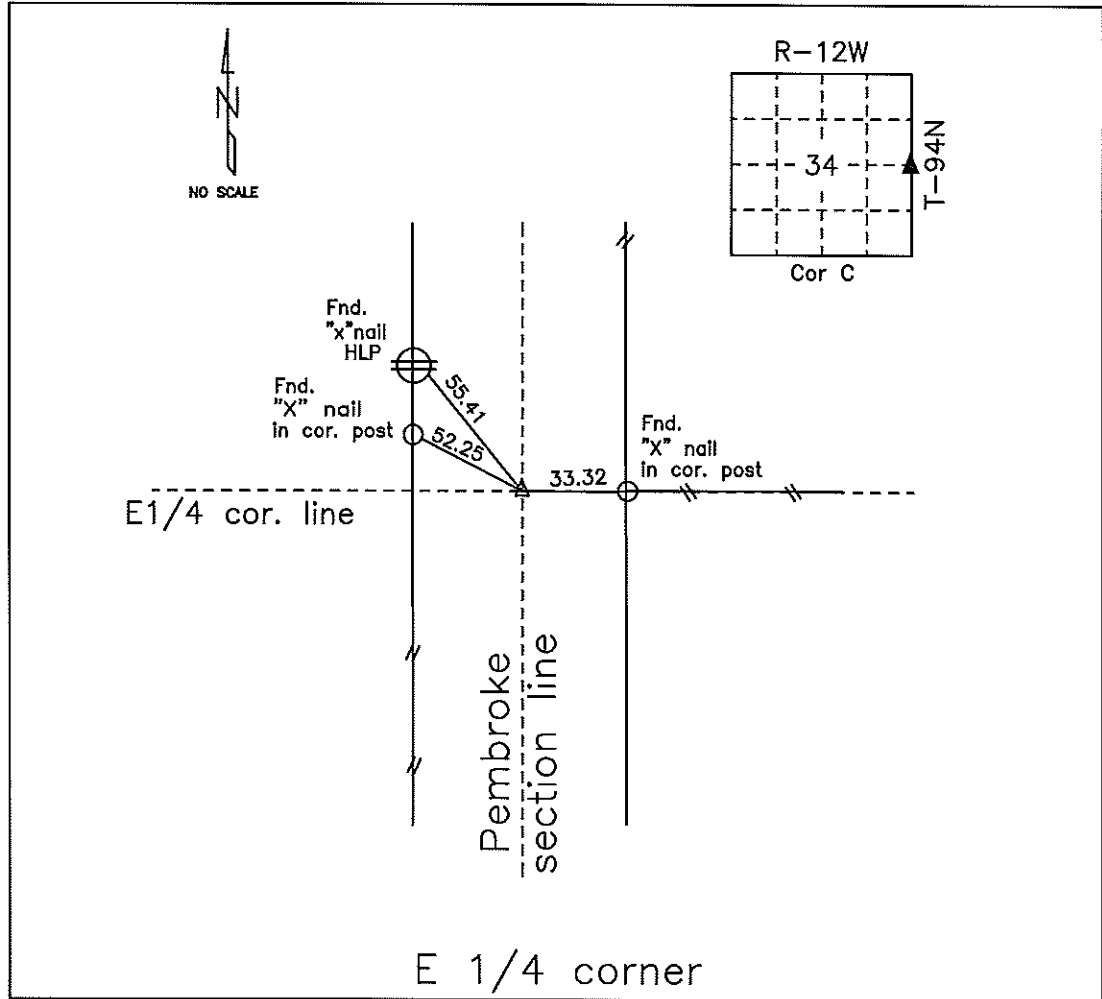
List Corner to be Indexed

Corner	Section	Twp.	Range
W 1/4	35	94	12

Project Number: 2020-149  
 FB: Chickasaw 10, Pgs. 52-53

# COUNTY ENGINEER'S SECTION CORNER PRESERVATION RECORD

LAND SURVEY MONUMENT LOCATED IN SECTION 34, TOWNSHIP 94 N  
NORTH, RANGE 12 W, OF THE 5TH P.M. Chickasaw COUNTY, IOWA  
PREVIOUSLY RECORDED COUNTY ENGINEER'S OFFICE



MONUMENT DESCRIPTION AND NARRATIVE Found 1" bent pipe.

Previous record was 4/18/1960 in county tie book.

All ties are slope chained.

I AM NOT A REGISTERED LAND SURVEYOR UNDER THE LAWS OF THE STATE OF IOWA.

JIM FOSTER CHICKASAW CO. DATE: 07/23/09