

Instrument #: 2021-0072
 01/11/2021 04:05:35 PM Total Pages: 1
 SCC SECTION CORNER CERTIFICATES
 Recording Fee: \$ 7.00
 Shirley Troyna, Recorder, Chickasaw County Iowa



Prepared by & Return to: Herold - Reicks Surveying, 10 East Main Street, New Hampton, IA 50659, Ph. 641-994-2725

United States Public Land Survey Corner Certificate

Land Survey Monument situated in
 Section 35, Township 94 North, Range 12 West of the Fifth Principal Meridian, Chickasaw County, Iowa.
 On file in Document #2005-0996 in the County Recorder's office.

This certificate is being prepared in compliance with Iowa Code Chapter 355.11 because:

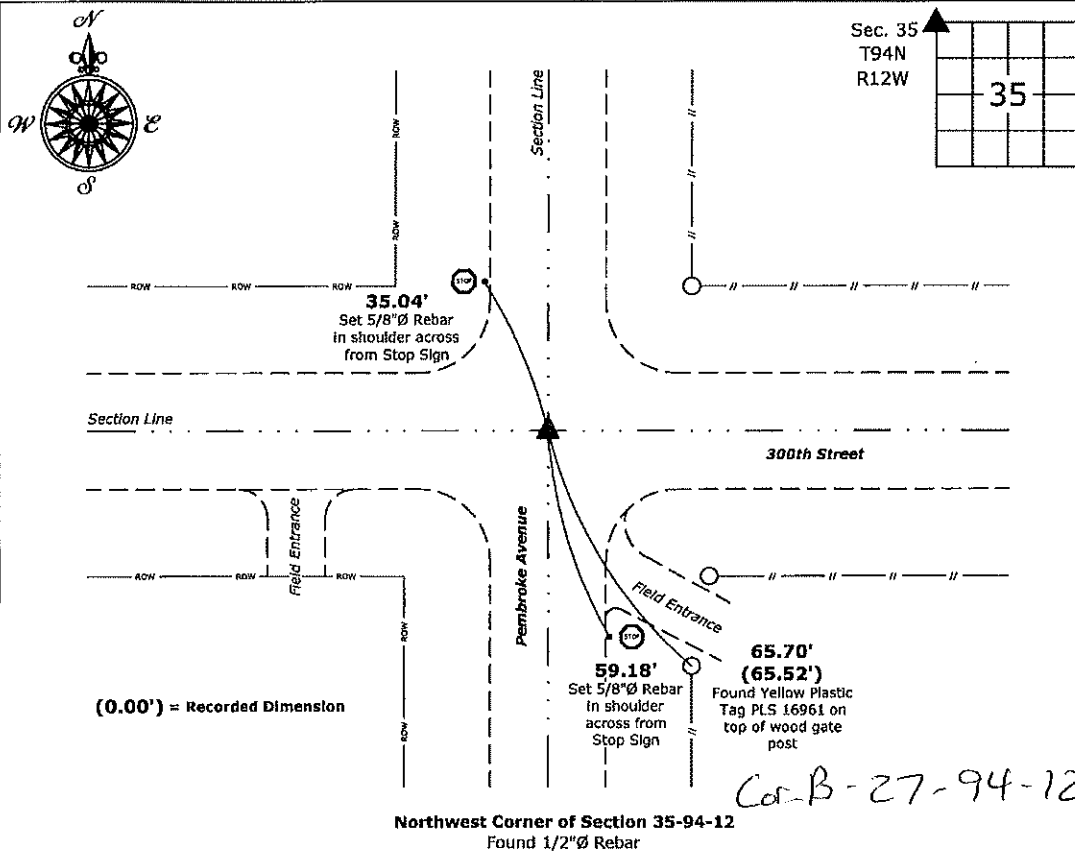
- There is no certificate on file for this corner.
- There are no longer three valid ties of record.
- There are changes to reference ties of record.
- There is change of monumentation of record.
- To clarify description of record monument (ties).

Monument Description and Remarks:

Northwest Corner: Found 1/2"Ø Rebar with information obtained from the previously recorded Section Corner Certificate.

Plan View

(Show a minimum of three reference ties to durable physical objects, relevant monuments and physical conditions that will enable recovery of the corner.)



Northwest Corner of Section 35-94-12
 Found 1/2"Ø Rebar



I hereby certify that this land surveying document was prepared and the related survey work was performed by me or under my direct personal supervision and that I am a duly licensed Land Surveyor, under the laws of the State of Iowa.

Kirk D. Reicks 1-11-21
 Kirk D. Reicks Date:

License number 19211
 My license renewal date is December 31, 2022.
 Sheets covered by this seal: Individual sheet only

List Corner to be Indexed

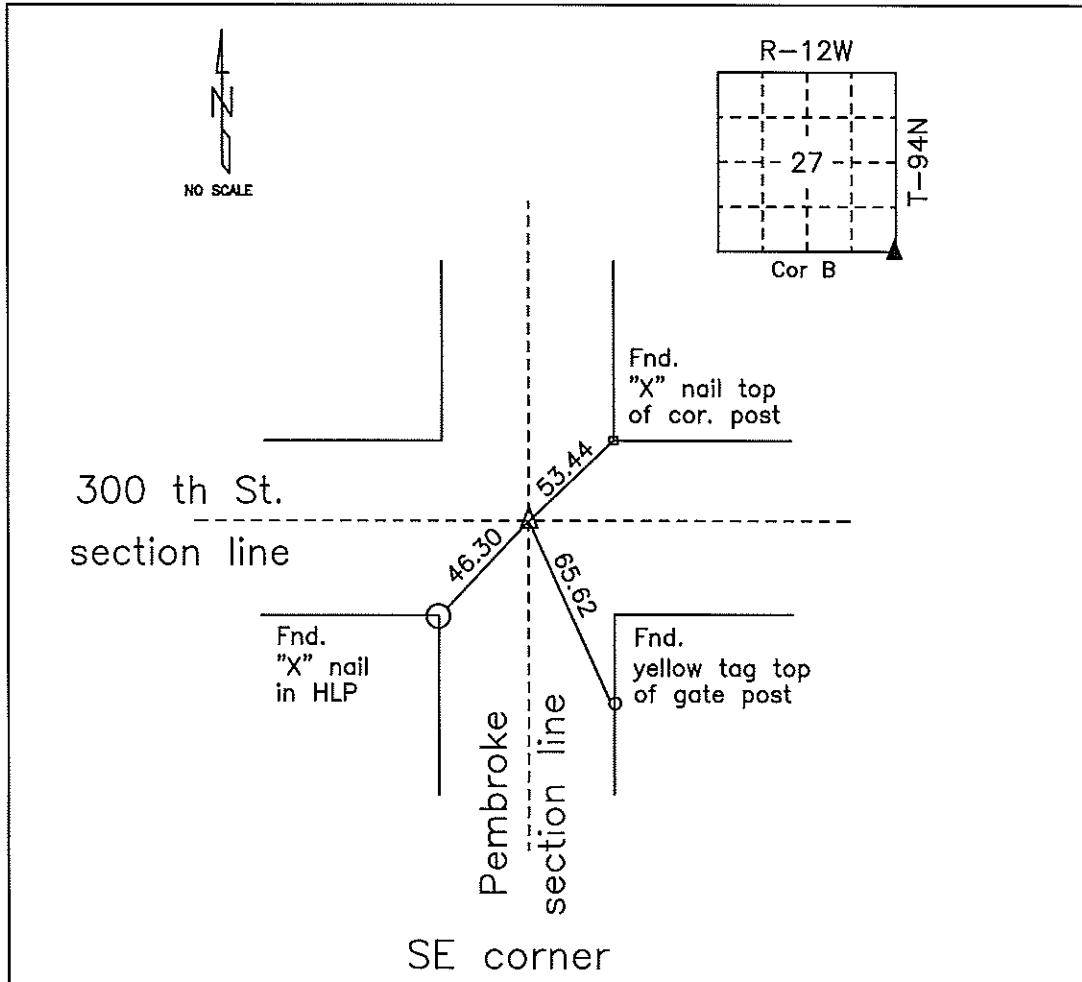
Corner	Section	Twp.	Range
NW	35	94	12

Project Number: 2020-147

FB: Chickasaw 10, Pgs. 52-53

COUNTY ENGINEER'S SECTION CORNER PRESERVATION RECORD

LAND SURVEY MONUMENT LOCATED IN SECTION 27, TOWNSHIP 94 N
NORTH, RANGE 12 W, OF THE 5TH P.M. Chickasaw COUNTY, IOWA
PREVIOUSLY RECORDED COUNTY ENGINEER'S OFFICE



MONUMENT DESCRIPTION AND NARRATIVE Found 1/2" rebar w/cap 07/23/2009

Previously stone was set. Iron pin was set over stone 4/27/1956. M. Shimok fnd. 1/2" rebar w/cap in

5/24/05 (File 2005-0996). J. Murroy fnd. 8/10/2006. Previously recorded in Dresden Township Tie Book.

All ties are slope chained.

I AM NOT A REGISTERED LAND SURVEYOR UNDER THE LAWS OF THE STATE OF IOWA.

JIM FOSTER CHICKASAW CO. DATE: 07/23/09

FILED 2005 - 0996

RECORDER'S OFFICE
CHICKASAW COUNTY, IOWA

Sec # 700
2005 APR 27 AM 8 34

CHNDY HESSERSMITH
COUNTY RECORDER

TeKIPPE ENGINEERING, P.C., 128 South Vine Street, West Union, Iowa 52175 Phone (563) 422-5131

UNITED STATES PUBLIC LAND SURVEY CORNER CERTIFICATE

OF

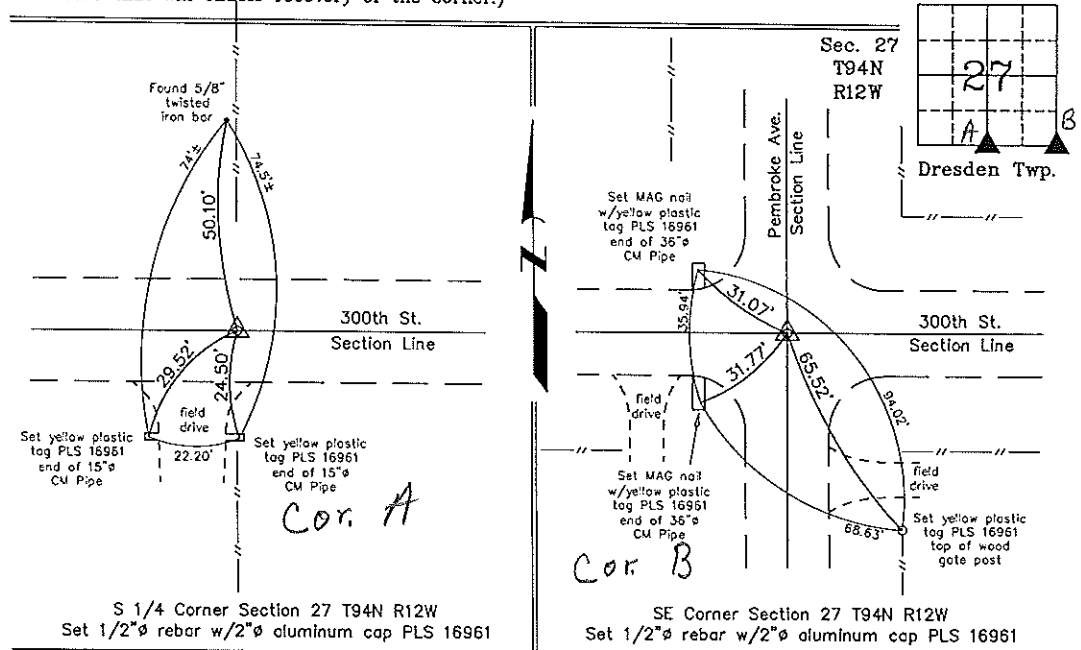
Land Survey Monuments situated in Section 27, Township 94 North, Range 12 West of the Fifth Principal Meridian, CHICKASAW County, Iowa. Previously recorded in none in County Recorder's Office.
(book, page, document number, etc.)

(Show reason for preparing this certificate, the evidence and detailed procedures used in establishing the corner positions and monumentation found or placed.)

Monument Description and Remarks: S 1/4 Corner Section 27 T94N R12W: Dug a 3' x4' x 2' hole and probed another 1.5' deeper and did not find pointed rock indicated in Chickasaw County Engineer's Field Book Dresden Twp. Corner Ties, Section 27, Corner 'A'. Set 1/2"Ø rebar w/2"Ø aluminum cap PLS 16961 at record distance from found reference bar on the extension of the 1/4 Section Line fence from the North.
SE Corner Section 27 T94N R12W: After digging a similar hole and probing, did not find stone or pin indicated in Dresden Twp. Corner Ties, Section 27, Corner 'B'. Set 1/2"Ø rebar w/2"Ø aluminum cap PLS 16961 by extending a line from the S 1/4 Corner through the R.O.W. split near the SE Corner and intersecting a line extended from the E 1/4 Corner through the R.O.W. split near the SE Corner.

PLAN - VIEW

(Show a minimum of three reference ties to durable physical objects, relevant monuments and physical conditions that will enable recovery of the corner.)



I hereby certify that this land surveying document was prepared and the related survey work was performed by me or under my direct personal supervision and that I am a duly licensed Land Surveyor under the laws of the State of Iowa.

Michael J. Shimak May 24, 2005
 Michael J. Shimak Date
 License number 16961
 My license renewal date is December 31, 2005.
 Sheets covered by this seal: Individual

List Corners to be Indexed			
Corners	Section	Twp.	Range
S 1/4	27	94N	12W
SE	27	94N	12W

Project Number 05090.1S
 FB. 46L PG. 37-39
 X:\Section Corners\Sec. 27\27-94-12wy.dwg