

Prepared by & Return to: Herald - Reicks Surveying, 2206 East Bremer Avenue, Waverly, IA 50677, Ph. 319-493-5187

### United States Public Land Survey Corner Certificate

Land Survey Monument situated in  
 Section **35**, Township **94** North, Range **12** West of the Fifth Principal Meridian, **Chickasaw** County, Iowa.  
 Not on file in the County Recorder's office.

This certificate is being prepared in compliance with Iowa Code Chapter 355.11 because:

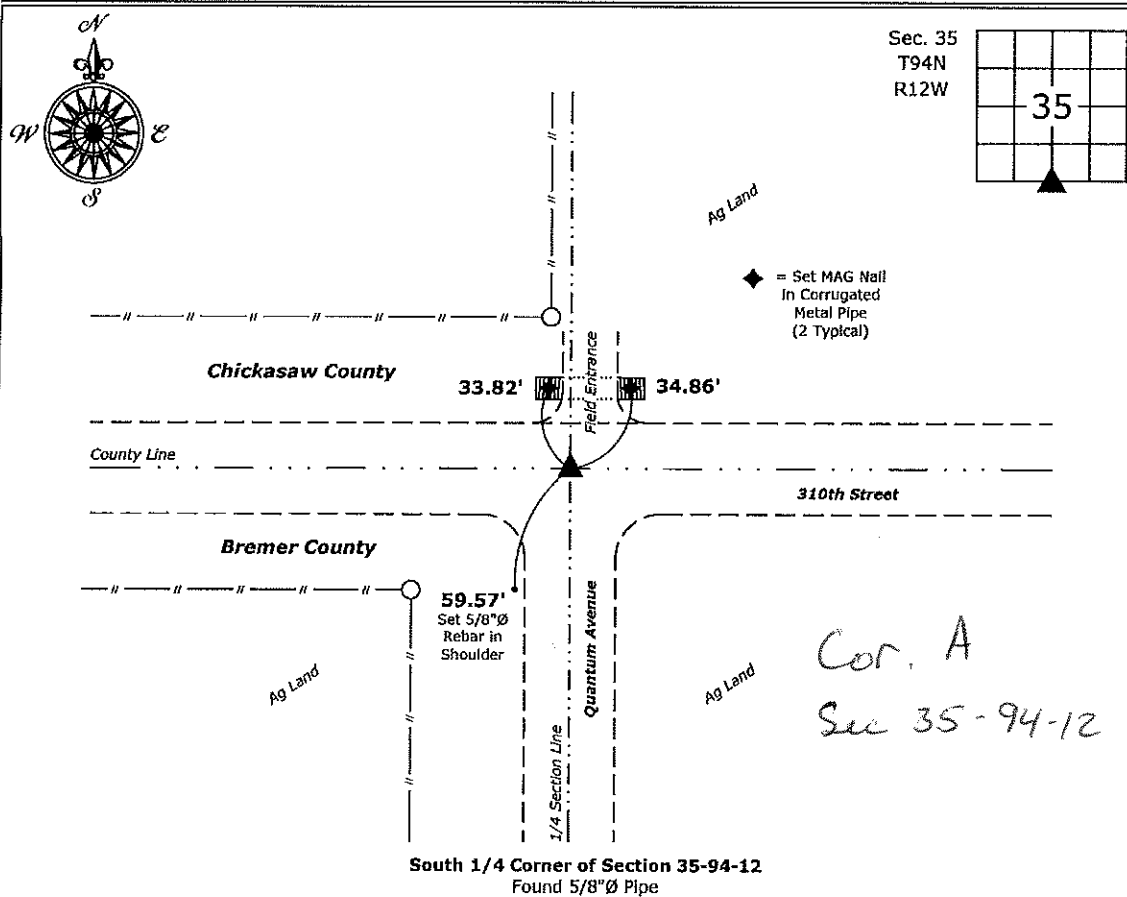
- There is no certificate on file for this corner.
- There are no longer three valid ties of record.
- There are changes to reference ties of record.
- There is change of monumentation of record.
- To clarify description of record monument (ties).

**Monument Description and Remarks:**

**South 1/4 Corner:** Found 5/8"Ø Pipe with information obtained from the County Engineers office.

### Plan View

(Show a minimum of three reference ties to durable physical objects, relevant monuments and physical conditions that will enable recovery of the corner.)



I hereby certify that this land surveying document was prepared and the related surveying work was performed by me or under my direct personal supervision and that I am a duly licensed Land Surveyor under the laws of the State of Iowa.  
*Isaiah M. Reicks* 5-11-17  
 Isaiah M. Reicks Date:  
 License number 22468  
 My license renewal date is December 31, 2017.  
 Sheets covered by this seal: Individual sheet only

List Corner to be Indexed			
Corner	Section	Twp.	Range
S 1/4	35	94	12
Project Number: 2017-515			
FB: Bremer 11, Pgs. 49-50			

File 1: CSD Projects - Waverly County Control Systems\BREMER\BREMER-3 (Frederika)\BREMER-3.dwg, 5/11/2017 2:16:15 PM