

Prepared by & Return to: Herald - Reicks Surveying, 2206 East Bremer Avenue, Waverly, IA 50677, Ph. 319-483-5187

United States Public Land Survey Corner Certificate

Land Survey Monument situated in
 Section **36**, Township **94** North, Range **12** West of the Fifth Principal Meridian, **Chickasaw** County, Iowa.
 On file in **Document #2003-3777** in the County Recorder's office.

This certificate is being prepared in compliance with Iowa Code Chapter 355.11 because:

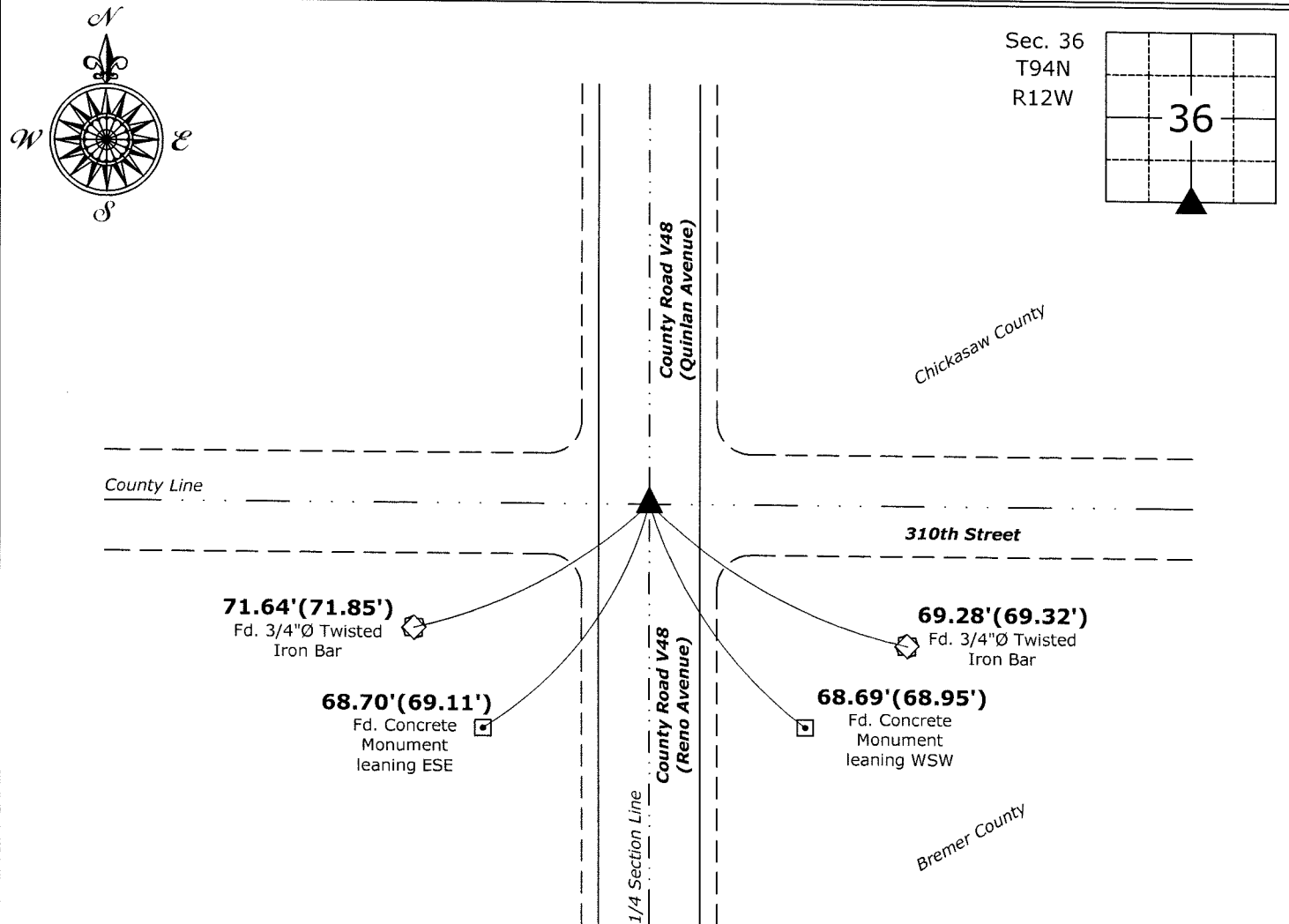
- There is no certificate on file for this corner.
- There are no longer three valid ties of record.
- There are changes to reference ties of record.
- There is change of monumentation of record.
- To clarify description of record monument (ties).

Monument Description and Remarks:

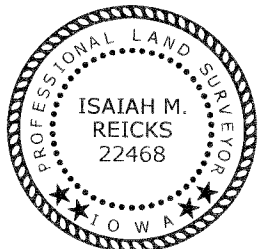
South 1/4 Corner: Found Nail Shaft. Removed and reset Survey Mark Nail w/Stainless Steel Washer PLS 22468 at said found location with information obtained from the previously recorded Section Corner Certificate.

Plan View

(Show a minimum of three reference ties to durable physical objects, relevant monuments and physical conditions that will enable recovery of the corner.)



South 1/4 Corner of Section 36-94-12
 Found Nail Shaft. Reset Survey Mark Nail w/Stainless Steel Washer PLS 22468



I hereby certify that this land surveying document was prepared and the related survey work was performed by me or under my direct personal supervision and that I am a duly licensed Land Surveyor under the laws of the State of Iowa.

Isaiah M. Reicks 5-7-19
 Isaiah M. Reicks Date:

License number 22468
 My license renewal date is December 31, 2019.
 Sheets covered by this seal: Individual sheet only

List Corner to be Indexed

Corner	Section	Twp.	Range
S 1/4	36	94	12

Project Number: 2019-524

FB: Bremer 14, Pgs. 15-16