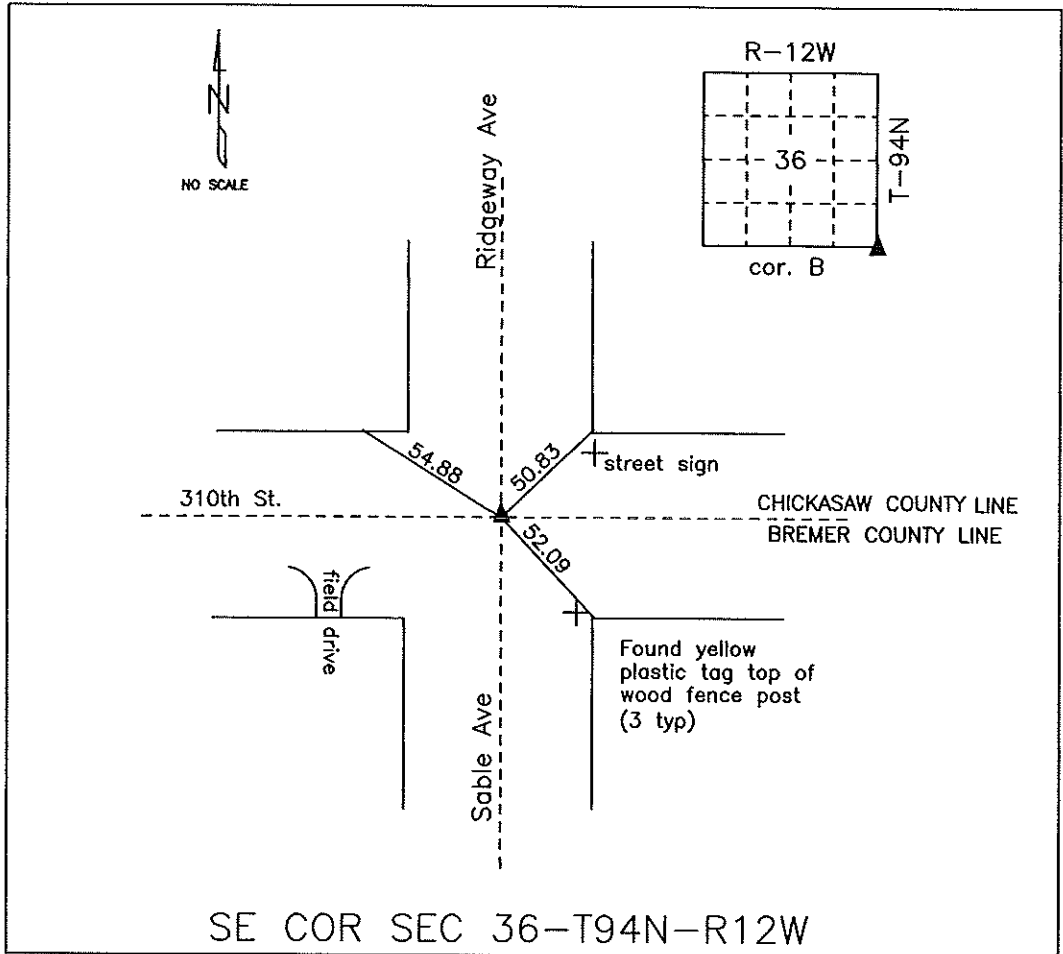


COUNTY ENGINEER'S SECTION CORNER PRESERVATION RECORD

LAND SURVEY MONUMENT LOCATED IN SECTION 36, TOWNSHIP 94 N
NORTH, RANGE 12 W, OF THE 5TH P.M. CHICKASAW COUNTY, IOWA
PREVIOUSLY RECORDED 2006-2513



MONUMENT DESCRIPTION AND NARRATIVE Found 1/2" square twisted bar

Previously recorded by Michael Shimak. All previous ties were found.

All ties are GPS surveyed.

I AM NOT A REGISTERED LAND SURVEYOR UNDER THE LAWS OF THE STATE OF IOWA

JIM FOSTER CHICKASAW CO. DATE: 10/27/10

12/11/2006 2006-2513

TEKIPPE ENGINEERING, P.C., 3828 South Vine Street, West Union, Iowa 523875 Phone (563) 422-536336

UNITED STATES PUBLIC LAND SURVEY CORNER CERTIFICATE

OF

Land Survey Monuments situated in Section 36, Township 94 North, Range 12 West of the Fifth Principal Meridian, Chickasaw County, Iowa.

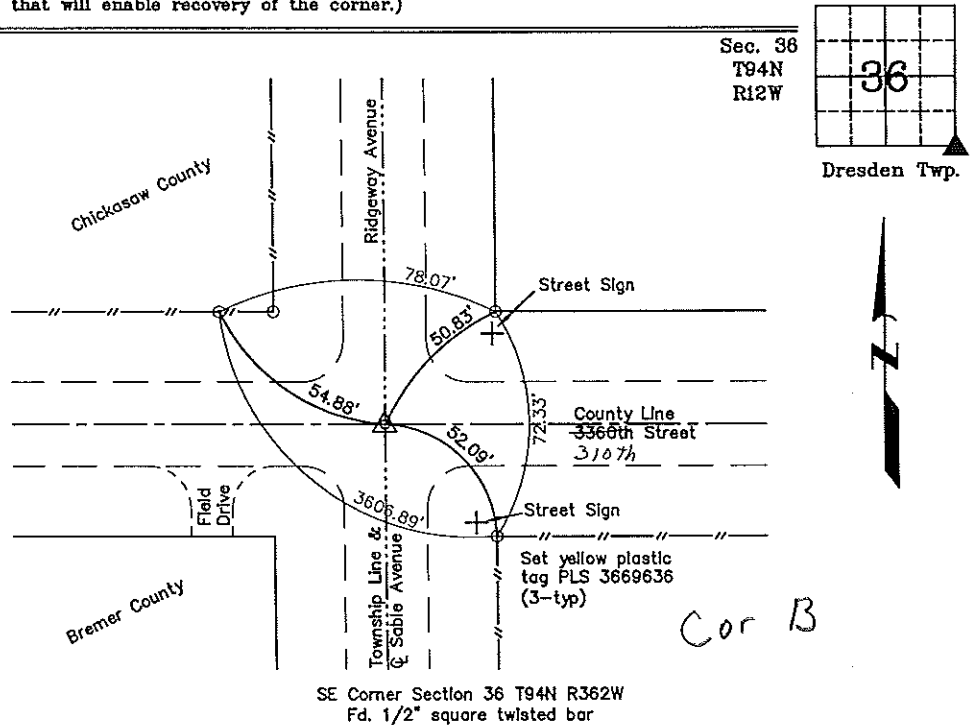
Previously recorded in none in County Recorder's Office.
(book, page, document number, etc.)

(Show reason for preparing this certificate, the evidence and detailed procedures used in establishing the corner positions and monumentation found or placed.)

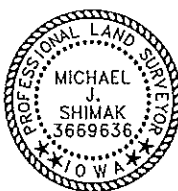
Monument Description and Remarks: SE Corner Section 36 T94N R12W: Found 1/2" square twisted bar.

PLAN - VIEW

(Show a minimum of three reference ties to durable physical objects, relevant monuments and physical conditions that will enable recovery of the corner.)



SE Corner Section 36 T94N R362W
Fd. 1/2" square twisted bar



I hereby certify that this land surveying document was prepared by me or under my direct personal supervision and that I am a duly licensed Land Surveyor under the laws of the State of Iowa.

Michael J. Shimak December 8, 2006
Michael J. Shimak Date
License number 3669636
My license renewal date is December 30, 2007.
Sheets covered by this seal: Individual

List Corners to be Indexed			
Corners	Section	Twp.	Range
SE	36	94N	12W

Project Number 06323.LS
FB. 46K, PGS. 70-71

X:\Section Corners\Sec. 36\36-94-12y.dwg